

Peak District Local Access Forum

On: Thursday 11 March 2021

At: Virtual - Webex Meeting

Agenda

Start: 10.00 am

1	Welcome and Apologies	John Thompson
2	Minutes from the last meeting, 3rd December 2020	
3	Matters Arising from the Minutes <ul style="list-style-type: none"> - Countryside Code and Peak District Proud - Right to Roam Campaign – report on Access Sub Group held on Friday 26th February, future actions 	John Thompson, Mike Rhodes, Roly Smith, Jon Stewart, Sarah Wilks
4	Public Speakers	
5	Green Lanes Annual Report	Sue Smith
6	Peak District National Park Restructure & Resources <ul style="list-style-type: none"> - Peak District Audience Delivery Plan (circulated with minutes of NPMP Advisory Group on 19th January). LAF response made (attached) to Defra re Access and Inclusivity Questionnaire (John) - Generation Green working with other National Parks and partner organisations 	Sarah Wilks, Head of Engagement
10 Minute Break		
7	Access Update - including update on the Access Fund and donations	Sue Smith
8	Accessible Peak District	Sue Smith
9	Derbyshire CC RoWIP Update	Gill Milward
10	20th Anniversary Annual Report Draft 2020	Sue Smith, Mike Rhodes
11	Members' Reports NPMP Advisory Group minutes of 19th January, 2021 - previously circulated # Others - <i>please notify Mike in advance</i>	John Thompson
12	Any Other Business	Mike Rhodes

13	Date and venue of next meeting <i>Proposed dates: June 10th, September 9th, December 9th 2021</i>	
----	---	--

Close: 12.30 pm

MINUTES

Meeting ID	2636
Committee	Peak District Local Access Forum
Date	03/12/2020
Attendees	<div>Steve Martin</div> <div>Martin Bennett</div> <div>Ben Seal</div> <div>John Thompson (Chair)</div> <div>Councillor Ian Huddlestone (Committee Member) ??</div> <div>Bob Berzins</div> <div>Richard Entwistle</div> <div>Charlotte Gilbert</div> <div>Louise Hawson</div> <div>Jez Kenyon</div> <div>Geoff Nickolds</div> <div>Paul Richardson</div> <div>Jon Stewart</div> <div>Edwina Edwards</div> <div>Andrew McCloy (Chair, Peak District NPA)</div> <div></div> <div>Mike Rhodes (Secretary)</div> <div>Sue Smith (officer)</div> <div>Karen Harrison (Minutes)</div> <div></div>

Item ID	54
Item Title	Welcome & Apologies
Summary	<p>The Chair welcomed everyone to the 20th Anniversary meeting of the Local Access Forum – the first to be established nationally - and to the second full LAF Meeting online. He was grateful to Andrew McCloy for joining this meeting as current Chair of the National Park Authority and a former Chair of the Local Access Forum. Members were also reminded that the meeting was being broadcast live via Youtube and the Chair thanked all involved in arranging and supporting the meeting.</p> <p>Apologies were received from Ally Turner, Roly Smith, Clare Griffin, Alastair Harvey, Joe Dalton, Gill Millward (Officer)</p>

Item ID	55
Item Title	Minutes from the last meeting of 24 September 2020
Summary	The minutes of the last meeting held on the 24 th September 2020 were approved as a correct record with thanks to Ruth Crowder for producing

	them. The Chair then offered his congratulations to Ruth on her recent promotion to the post of Democratic Services Manager.
--	--

Item ID	56
Item Title	Matters Arising from the Minutes
Summary	<p>Minute 45.</p> <p>4. LAF Annual Report The Chair reported that the Annual Report together with a covering letter had been circulated and he had received some acknowledgements back.</p> <p>7. Moorland Tracks Bob Berzins updated the LAF Members on the position regarding the Midhope Moor Track, which is now being dealt with by a virtual Public Inquiry starting on the 8th December. Details on how to take part in the Inquiry are available on the Peak District National Park Authority Website.</p> <p>Minute 46. Monsal Trail The Chair confirmed that he had attended a meeting on 14th August at Millers Dale with Sarah Dines MP, Robert Largan MP, Cllr Andrew McCloy, Cllr Simon Spencer (Deputy Leader of the County Council), Charlotte Gilbert and Officers of the National Park Authority and Derbyshire County Council regarding proposals to re-instate the Monsal Trail back to a railway. It was confirmed that there were no funds available in Round 1 of the Department for Transport's Restoring Your Railways Ideas Fund for a feasibility study. However, there could be in Round 2, although had heard nothing more yet. It was noted that the Authority and County Council, as well as LAF representatives, had expressed concerns about the railway proposals and noted that agreed minutes of the meeting had been circulated to all who attended and LAF members.</p>

Item ID	57
Item Title	Access Report including 20th Anniversary and Anniversary Gates
Summary	<p>Sue Smith gave a presentation to Members on the 20th Anniversary of the Countryside and Rights of Way (CROW) Act 2000 and the LAF's involvement with access improvements over the 20 years, since its formation in December 2000. In recognition of this and the 70th anniversary of the Peak District National Park, Sue reported on the ongoing work on accessibility and Anniversary Gates to open up open access to all by the removal of stiles and linking areas of access. There is a focus on volunteering with Peak Park Conservation Volunteers making and installing gates in key areas, supported by the Countryside and Maintenance Projects Team, Rangers, and landowners, with funding from the Access Fund, including a donation from the Alpkitt Foundation facilitated by Adge Last. Sue thanked all those involved in improving access and accessibility to the National Park. Members asked what the challenges would be for the next 10/20 years? Mike responded in that it was important that the National Park was a place that people wanted to visit and enjoy and that the infrastructure and investment was in place to help them to do that.</p>

	<p>The Chair thanked Sue for her presentation then invited Cllr Andrew McCloy to speak to the LAF Members as a former Chair of the Local Access Forum. Cllr McCloy reported that the role of the LAF was integral to the all round success of the National Park, and has never been as important as it was now and was looking forward to celebrating the National Park's 70th Anniversary next year and including the Forum in that.</p> <p>The Chair congratulated Mike Rhodes, who was celebrating his 20th year as Secretary to the LAF, and thanked him for his support, professional advice and enthusiasm which had been greatly appreciated. He was then presented with a certificate and gift from the Members of the Forum, which had been organised by Sue Smith.</p> <p>Mike thanked Members both past and present for their support and hard work in ensuring that access to the Park was made available to all.</p> <p>AGREED:- That Sue Smith's presentation be welcomed and noted. Thanks to Cllr Andrew McCloy for addressing the LAF on its 20th Anniversary, and to Mike Rhodes for his support, advice and enthusiasm since its formation.</p>
--	--

Item ID	58
Item Title	Derbyshire Rights of Way Improvement Plan Report
Summary	<p>The Forum considered the report submitted by Gill Millward in her absence, and were asked to contact Gill by email if they had any questions.</p> <p>Martin Bennett, expressed his thanks to Gill and was pleased to see that more was being done regarding signposting at the start of routes.</p> <p>The LAF Members agreed that the Chair would send a consultation response, based on his draft letter, to Tim Gregory as Director of Economy, Transport and Environment at Derbyshire County Council regarding the proposed Ashbourne Bypass.</p> <p>AGREED:-</p> <ul style="list-style-type: none"> • To note the report and to pass any comments and questions on to Gill Millward for response. • To the Chair sending a letter on behalf of LAF regarding the proposed Ashbourne Bypass Consultation.

Item ID	59
Item Title	Access Sub Group Report
Summary	<p>Review of Access Report and Feedback</p> <p>John Thompson tabled his paper on the Review of Access which was discussed at the sub-group meeting on 10th November, with the addition of further comments received since that discussion. The Chair will follow points up and invite LAF members involvement going forward.</p>

Bob Berzins (sub-group Chair) reported on the discussions regarding access and the successes there had been as well as concerns regarding some user groups not been able to engage in activities in particular water sports in the National Park. There was a debate on how the LAF could get involved. The organisers of a new national Right to Roam Campaign have offered to do a presentation to a future meeting of the LAF. The Chair asked if the LAF would be interested in taking this offer up? Members supported this and Bob will pursue. Possible items to discuss would include mountain biking and wild camping.

Wooded Landscapes Plan

Response had been circulated by the Chair as a letter of 13th November to Suzanne Fletcher at the Peak District NPA.

Countryside Code and Recreation Hubs

Jon Stewart updated the LAF on where we were with Recreation Hubs and the Countryside Code.

a) Recreation Hubs

A workshop took place on the 22nd October, followed by a report on the Visitor Management and Recreation Hubs Programme, to the NPA Programmes and Resources Committee on 4th December. This includes action to take Recreation Hubs in and around the Peak forward in future planning and management of visitors and pressure. Both documents had been circulated to LAF members.

b) Countryside Code/Peak District Proud

Jon Stewart reported in relation to a report Roly Smith had circulated at the Chair's request, that Natural England has decided that there needs to be a review of the Countryside Code:1) to, refresh the detail of the code before next Easter and 2) to develop an associated campaign from Easter and beyond. They intend engaging with stakeholders and holding a virtual working group.

LAF Members considered whether the strapline needs to be modernised to encompass different audiences from when the code was first produced. The suggestion of Awareness, Co-operation and Enjoyment was made and Jez Kenyon was thanked for his suggestions included in Roly's report.

Members asked about resources, and what role the LAF can play, including contacting Defra for more resources in line with the Glover Review. Cllr Andrew McCloy reported that he was expecting a ministerial announcement soon with more detail, so should be clearer by the time of the next LAF Meeting in March.

AGREED:-

That the LAF receives and accepts the report and to invite a presentation from representatives from the Right to Roam Campaign to a future meeting of the LAF or Access Sub Group as appropriate.

Item ID	60
Item Title	Members Reports
Summary	<p>Right to Roam Campaign Ben Seal reported on the letter to the Prime Minister to mark the anniversary of the campaign. Ben to also circulate the website link to LAF Members.</p> <p>National Park Management Plan (NPMP) Advisory Group John Thompson reported that the letter to Defra from Dianne Jeffery from the National Park Management Plan Advisory Group regarding priorities in the Landscapes Review Report, had not been sent but an update would be provided to the LAF Meeting in March.</p>

Item ID	61
Item Title	Any Other Business
Summary	<p>A57 Link Roads Consultation Mike Rhodes to send details regarding the Highways England A57 Link Roads project at Mottram Moor which was out for public consultation until 17 December 2020.</p> <p>Peak District Foundation Mike Rhodes to circulate details on the Peak District Foundation.</p> <p>Rights of Way/Cattle Martin Bennett updated LAF members on the response he had received to the joint letter which the Ramblers/British Horse Society/Disabled Ramblers/Open Spaces Society/British Mountaineering Council/ Byways and Bridleways Trust/Cycling UK had sent regarding the proposal by the National Farmers Union/Country Land and Business Association for landowners/farmers to be able to put in temporary rights of way diversions on land where livestock were present, in particular cattle. There was concern about the amount of work this would involve, and that more thought was needed on the proposal.</p>

Item ID	62
Item Title	Dates of Next Meetings
Summary	<p>Proposed dates for 2021</p> <ul style="list-style-type: none"> • 11 March • 10 June • 9 September • 9 December

The meeting ended at 11.40am with thanks from the Chair to all who attended and early best wishes for Christmas and New Year and hopes we can get back to normal as soon as possible in 2021

This page is intentionally left blank

Peak District Local Access Forum Access sub-group

**On: Friday 26th February, 2021
Video-conference meeting**

Attendees

Chair: Bob Berzins

Members: Louise Hawson, Richard Entwistle, Martin Bennett, John Thompson, Geoff Nickolds, Ben Seal, Charlotte Gilbert, Joe Dalton, Alistair Harvey, Edwina Edwards, Jeremy Kenyon, Joe Dalton, Steve Martin

Officers: Mike Rhodes, Sue Smith, Sarah Wilks (part)

Guests/Presenters: Guy Shrubsole, Nick Hayes, Danny Udall

Apologies: Roly Smith, Gill Millward, Jon Stewart

Following Welcomes and Introductions, Presentations followed (copies provided):-

Guy Shrubsole – outlined the current situation on rights of access, explaining that the concern is to extend access beyond existing Right to Roam (RtR) which would also reduce pressures on RtR areas currently covering 8% of England area. Ideally this would include greenbelt land, woodlands and rivers and waterways.

Nick Hayes – had been overwhelmed by the level of enthusiasm and attention since the launch of his and Guy's books and campaign. Litter had become an 'enraging' issue – speaking to a distinct lack of care for the countryside and environment. RtR has to come with responsibilities and solving the litter problem has to be part of this.

Since the CROW Act only £2k per year has been spent by the government on promoting and providing information on the Countryside Code.

RtR is important in increasing the health of the public but while also maintaining the health of the environment and should also be 'valourising' countryside managers.

Lessons may be learned and adopted from initiatives like Trash and Trails and Surfers Against Sewage which have both succeeded in actively engaging people in caring for the countryside and the environment.

The aim should be for increased access to be accompanied by increased care and concern and the mental health benefits that flow from joining initiatives and associated camaraderie.

Lessons are available from the more extensive RtR in Scotland which encourages a dialogue between users and managers and which is subject to a 5-yearly review.

Sarah Wilks – in response agreed on the need for more education and engagement and welcomed the extra resources Natural England have found for the Countryside Code.

Press coverage recently of visitors as hooligans has been shocking, as only a minority of visitors to the National Park behave in this way. Work was ongoing with Visit Peak District to promote more widely the areas outside the National Park; any support is welcome for a challenging year ahead.

Danny Udall – gave a perspective from the Eastern Moors Estate where the issues raised had chimed with his experience.

Visitors were already here and most are not an issue – odd individuals and fly tipping make the headlines but a sense of proportion is important, bearing in mind the proximity to urban conurbations.

What's served best has been a set of guiding management principles, emphasising the importance of enjoying access to nature and setting out to improve access. Most of Eastern Moors is RtR after CROW and their aim accordingly has been to make a better quality of landscape and better quality of experience without urbanisation or at a cost to the environment.

Access improvements have been developed and agreed under the wider Sheffield Moors Partnership and a permissive bridleway network has been created which has largely worked well. The focus has been on assessing and reducing the impacts on nature, rather than on legalities and misbehaviour.

Some visitors are just concerned with self interest however, and damage to the SSSI by a minority of 4x4 drivers is proving a significant issue at present.

Some wild swimming has taken place on a small reservoir – a bit like a seaside resort at times with accompanying litter issues.

Peak district Proud has been a welcome initiative and more visitors do seem to be picking up litter themselves.

The Meeting then opened for comments more widely.

Ben Seal – welcomed the direction of travel, emphasising the need for a focus on the quality of experience, wider connectivity and overall better management of access.

Nick Hayes – provided an example from the Kennet and Avon area where a landowner was seeking designated bathing water status as a means of improving water quality, at the same time benefitting the local community. He had experienced problems with misuse and littering by visitors but was improving the situation by engaging the local people through negotiating a litter picking scheme and making them care more for the site in the process.

Joe Dalton – this was already happening in the Peak District, but locals were feeling overwhelmed by the scale of the littering problem and finding difficulty in organising adequate disposal facilities. **Danny Udall** had volunteers but lacked the staff to manage them effectively. He was encouraging users to be part of the solution by delegating management and litter disposal to the user groups. **Edwina Edwards** works with people with learning disabilities who are picking up large amounts of litter and village groups are also doing the same, although currently inhibited by Covid. She has found the local authorities helpful in picking up bagged litter if they are notified and will collect from designated collection points. Duke of Edinburgh, Scouts and Guides groups nationally are all encouraged to pick up litter. More co-ordinated dates overall would help.

Guy Shrubsole – summarised his thoughts so far, welcoming the update on current issues and actions.

1. National government needs to invest more in reviewing and promoting the Countryside Code, with Natural England responsible for the review and re-launch. Will this be given enough priority compared to other government initiatives? – for instance visitors to the Lake District are all fully aware of Covid advice, but not so of the Countryside Code.
2. Legislation is required, most appropriately through amendments to the CROW act to extend the RtR to other landscape types.
3. There didn't appear to be opportunities for major RtR extension in the Peak District and National Park. Should the focus be on increasing access elsewhere?

Sarah Wilks – had added a comment that the Agriculture Bill has to be a key part of the development of wider access. There is a need to ensure that the ability to access more land is included but in the right way with the right incentives applying in an appropriate way at all levels of the new ELMs scheme.

The importance of National Parks and AONBs should be reflected by funding them properly.

Jeremy Kenyon - access to water is well behind where it should be and while greater general access in the National Park might be welcome the importance of quiet areas for wildlife shouldn't be underestimated. There was a clear need for better awareness and education on the Countryside Code for young people in particular and the rights of way/footpath network should be a key component in better managed access.

Charlotte Gilbert – Commented: -

1. Tier 3 funding should be available to ALL land managers, not just farmers. As such it could enable the creation of better networks.
2. Supported the importance of the path network as a whole as enabling safe access where users are comfortable that they are freely able to go.
3. Supported the Glover report proposal for the creation of a national body of rangers – widespread rangers with this status could help land owners to manage visitors and their impacts.
4. Extension to CROW would help to widen and improve the access network, especially if Rights of Way can be restored to previous historic levels.

Martin Bennett – made the point that as a Rambler on his local paths he scarcely meets anybody, when compared to the traditional hotspots like Dovedale. It would be helpful to promote the use of local rights of way to spread the load. And could the contribution of excess packaging to litter problems be included in any campaigning on this issue?

John Thompson (LAF Chair) – expressed his thanks for the presentations and contributions so far and summarised some relevant LAF activities.

1. The LAF has devoted a lot of attention to the Countryside Code review and provided detailed feedback.
2. We have worked closely with the National Park authority on proposals on visitor management and hubs.
3. MPs and other influencers are pressed on implementing the Glover report at every opportunity.
4. Supported suggestion by Jon Stewart that the creation and promotion of better walking and cycling access routes into the National Park should be a priority.

Joe Dalton – commenting on the proposal for greater access to rivers emphasised the difficulties this might pose to barriers within rivers for land management and the impact on the benefit of small rivers to wildlife. He also reiterated his existing concerns over path erosion due to intensive use, control of dogs on access areas and aspects of wild camping.

Bob Berzins – summarised that there was clearly much consensus over access management and behaviour issues. What more should the LAF be doing? For instance, should the LAF be involved in lobbying for more resources for the National Park?

Guy Shrubsole – it had been helpful hearing of the issues so far. So: -

1. Will there be enough funding for the effective re-launch and promotion of the Countryside Code? Government should be pressed to resource this properly.
2. How will the revised Code differ from the effective measures seen in Scotland?
3. Concerned that National Parks seem to be the only places where there is a debate about access. This need to be happening about more general access elsewhere around the country.
4. There is a need to encourage and enable people to be more actively involved in land and environmental management and restoration, building on the concerns for climate change.

Bob Berzins – queried whether LAFs elsewhere had a role or were attempting to influence creating broader access? Has much liaison been taking place?

John Thompson – explained that exchange with other LAFs had been limited and difficult due to the Covid outbreak. We would however be continuing to press with them for the implementation of the Glover report.

Nick Hayes – welcomed the general support and enthusiasm for improved and wider access. One aspect he was keen to address was the abuse of land managers which he felt was rooted in historic enmity to private property. There shouldn't be conflict between land owners/managers and access users and he would welcome more opportunities to listen to land managers about their issues. Access to the outdoors is a national public good that can make a significant contribution to reducing the estimated £72bn cost to the NHS of sedentary lifestyles.

Mike Rhodes – suggested that it was difficult to rationalise issues into effective action. Mountain bike groups were helpful in initiatives to discourage off-network use, but as in other cases this is undermined by a minority of users who are determined to go where they want, regardless. The overall principle needs to be to assess impacts and explore how and where they can be spread.

The meeting continued with some further discussion on: -

- The importance of sustainable travel to get visitors into the countryside.
- The use (and abuse) of barbed wire so extensively in the UK countryside compared to elsewhere.
- The benefits which might accrue from a more openly accessible land registry.
- And finally, the need to promote models of good and positive behaviour, rather than over stressing and publicising the worst.

The Meeting finished at 12.00 noon with thanks to our guests, members involved and to Louise for setting it up online.

Peak District LAF Access Group Meeting 26 February 2021

Right to Roam conversation with Guy Shrubsole and Nick Hayes

Chat Log

Sarah Wilks (to Everyone): 10:52: Sorry to have to leave - some other thoughts

Sarah Wilks (to Everyone): 10:55: new system of grants for farmers is likely to have a big access element - an opportunity for all. Still very much a role for #PeakDistrictProud to share message of respect, need to work in partnership to have any effect, what do the current visitors to the National Park want to do and do/can we make that possible? BBQ, swimming, wild camping, overnight motorhome view and a loo

Roly Smith (to Everyone): 10:55: Roly Smith: Sorry I couldn't join the meeting, but I was able to watch and listen to the presentations. A question for Guy and Nick, if I may. Where do you see the next steps in your Right to Roam campaign, if not to aim for the proven Scottish model?

Guy Shrubsole (to Everyone): 10:57: Hi Roly, sorry you couldn't join - our campaign has been proposing extending CRoW from the current 8% of land it covers in England to woods, rivers & Green Belt land.

Steve Martin (to Everyone): 11:01: my thanks to Nick and Guy for their eloquence and commitment for greater public access. As an environmentalist my concern is your concern about the twin concepts of rights and responsibilities. What we need is much more emphasis from government to promote social learning about these concepts and how they play out in practice. Many thanks. Steve Martin

Ben Seal (to Everyone): 11:04: Nick - we do exactly that on our land assets at BC. On the Dart we are able to keep our little bit of riverbank & woodland open access to everyone purely because we have local paddlers, swimmers and villagers visiting and caring for the site daily. The challenge is upscaling this, but it works.

Louise Hawson (to Everyone): 11:05: Sheffield Litter Picking group has agreement with SCC to be able to take litter to sites without charge

Roly Smith (to Everyone): 11:16: Roly Smith: Surely promoting access to the countryside is a national, Governmental, responsibility. But what hope do

Guy and Nick have of the present administration taking up this responsibility?

Guy Shrubsole (to Everyone): 11:20: I'm not convinced that arable land, as it's currently intensively farmed, is a haven for wildlife...

Ben Seal (to Everyone): 11:20: Louise - The challenge that we face with ELMS is making it really clear that the scheme CAN and SHOULD benefit landowners financially to manage land (and water) better for the public to enjoy. At the moment I get the feeling that Defra are terrified that any mention of 'public access to the countryside' would simply put landowners and farmers off. We are working on this a lot at the moment with BMC, Rambkers and OSS

Guy Shrubsole (to Everyone): 11:20: (But we're not asking for increased access to arable land)

Danny Udall (to Everyone): 11:23: Agree re Tier 3 and the future role of Farmers and land mangers is changing. under new schemes Farmers have a key role and should be rewarded for doing so.

Louise Hawson (to Everyone): 11:23: Ben, yes, I think you're right. Maybe it's about how we talk about it - funds to support farmers to deal with the access issues they face (at the tier 1 level at least) might be more appropriate.

Guy Shrubsole (to Everyone): 11:27: Martin - agree, time for that long-promised bottle Deposit Return Scheme from the Govt!

Louise Hawson (to Everyone): 11:28: Younger generations are much more aware of single use plastic issues and looking for alternatives. Brands are aware of this. Perhaps this is an issue that the food industry is starting to help us with?

Jeremy Kenyon (to Everyone): 11:29: Re dissipating the pressure more widely. Its one of the things I am pushing with Derbyshire County Council. Have a look at what Greater Manchester have, with gmwalking.co.uk. Providing good information is vital - about walking groups, routes, and the footpath network in general. I am using the health agenda, and the recent interest from Covid, to see if we can get a programme together of every local community having access to some local routes, starting from their village / ward. Its that rich very local network that will help dissipate the

pressure.

Louise Hawson (to Everyone): 11:30: Nick and Guy, have you engaged with the NFU at all?

Danny Udall (to Everyone): 11:30: Space for Nature, yes better access but maybe not everywhere, we find it works where people flow through well looked after routes leaving space for nature inbetween. space for both, agree time to rest and time for wildlife to recover.

Ben Seal (to Everyone): 11:35: Guy - could you get Ben Goldsmith MP to write a written question to the SoS regarding funding for the Countryside Code? No reason why one of the LAF couldn't do the same with Sarah Dines MP

Roly Smith (to Everyone): 11:36: Roly: I agree with Ben. Let's get them to live up to their responsibilities!

Danny Udall (to Everyone): 11:37: Boots on the ground, we find the <1% who do have a disproportionate impact are only challenged on their impact through a conversation onsite. these 1% are often completely unaware or care. yes to countryside code, also to people out there helping resolve these conflicts.

Louise Hawson (to Everyone): 11:40: I agree Danny. More rangers!

Louise Hawson (to Everyone): 11:42: will the national trust be promoting some of these messages in their urban tree planting work?

Danny Udall (to Everyone): 11:44: Yes, I have the head of NT Land Outdoors and Nature visiting soon and will find out more then about the messages about encouraging our a more wooded landscape.

Roly Smith (to Everyone): 11:51: Roly Smith: Agree with Mike. Everyone hates litter but no one admits to dropping it! Education is the key.

Edwina (to Everyone): 11:52: Thanks for a useful discussion. Let's hope that the opening up of the countryside will be more reasonable this Spring and summer with greater understanding and respect for each other and the environment.

Mike Rhodes (to Everyone): 11:52: Indeed, really good to hear the quality and diversity of the discussion, and thanks to Nick and Guy for provoking the discussion. as you said, discussion is key. Viva the LAF :)

Alastair Harvey (to Everyone): 11:52: Thank you everyone, apologies but I

need to leave now. This has been a really interesting and thought-provoking discussion - thank you for the presentation Guy and Nick and Bob for Chairing. Thanks again!

Guy Shrubsole (to Everyone): 11:52: Thanks Roly, Edwina, Mike and Alastair!

Roly Smith (to Everyone): 11:54: Roly Smith: Just like to add my thanks to Bob and Louise for organising this, which I was able to enjoy without being able to join in the discussion. And warm thanks to Guy and Nick for their excellent presentations. Keep safe, everyone.

Guy Shrubsole (to Everyone): 11:54: Thankyou Roly, hope to stay in touch!

Sue Smith (to Everyone): 11:54: Good discussion everyone. Thanks Nick and Guy for coming to speak to us.

Danny Udall (to Everyone): 11:56: Huge thanks to Nick and Guy for the discussion. Thanks to all, I have alot to take away and think about.

Martin Bennett (to Everyone): 11:57: Could rolled wire be substituted in some cases for barbed wire?

Mike Rhodes (to Everyone): 11:59: Thanks everyone!!

Charlotte Gilbert (to Everyone): 11:59: Thank you everyone.

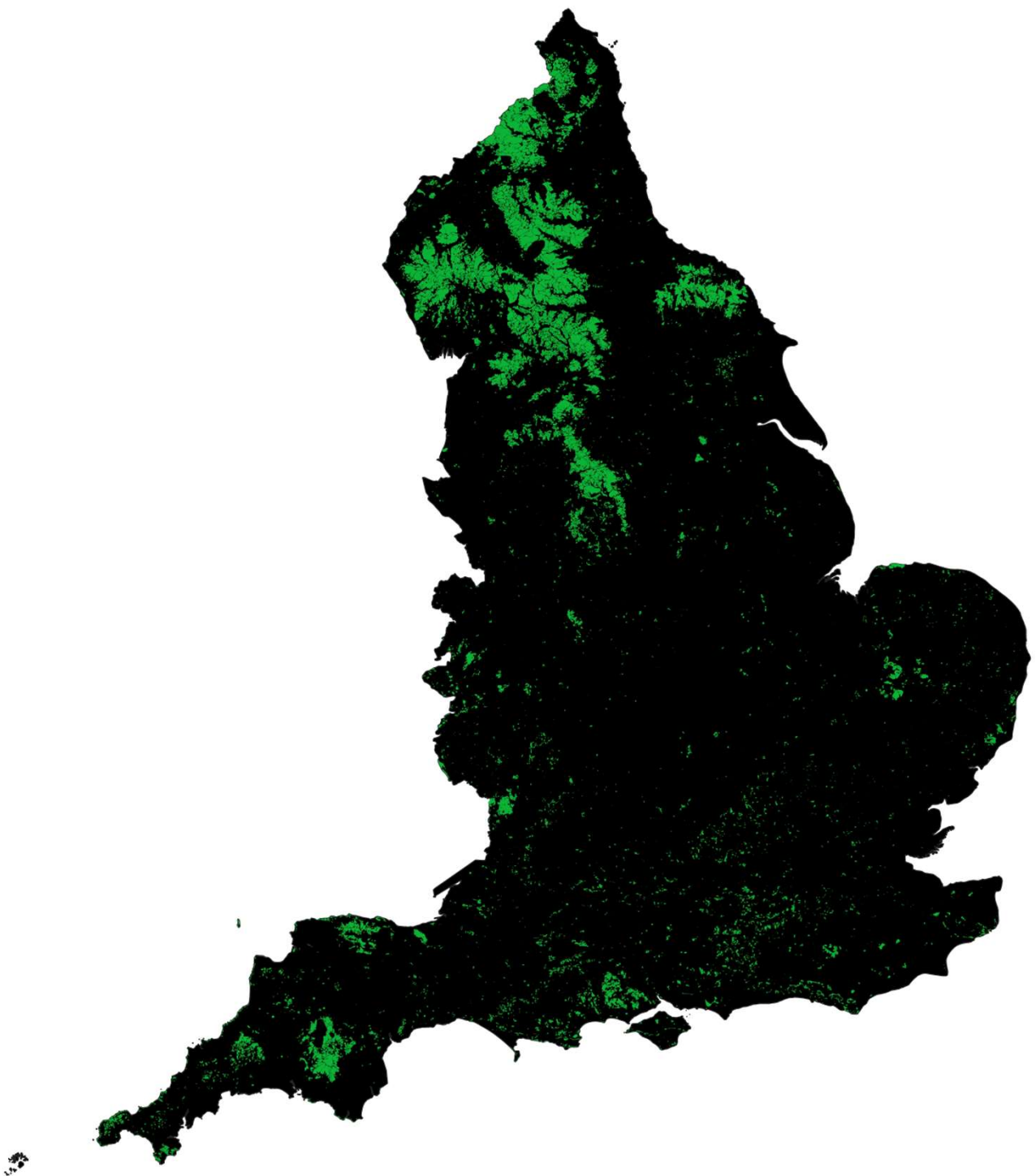
Geoff Nickolds (to Everyone): 12:01: no idea why my sound hasn't worked. My point would have been to agree with importance of footpath network (e.g. through woodlands) and a point on reduced legal liability for any new rights for landowners as was implemented in CEOW. Notes will follow....

Extending Right to Roam?

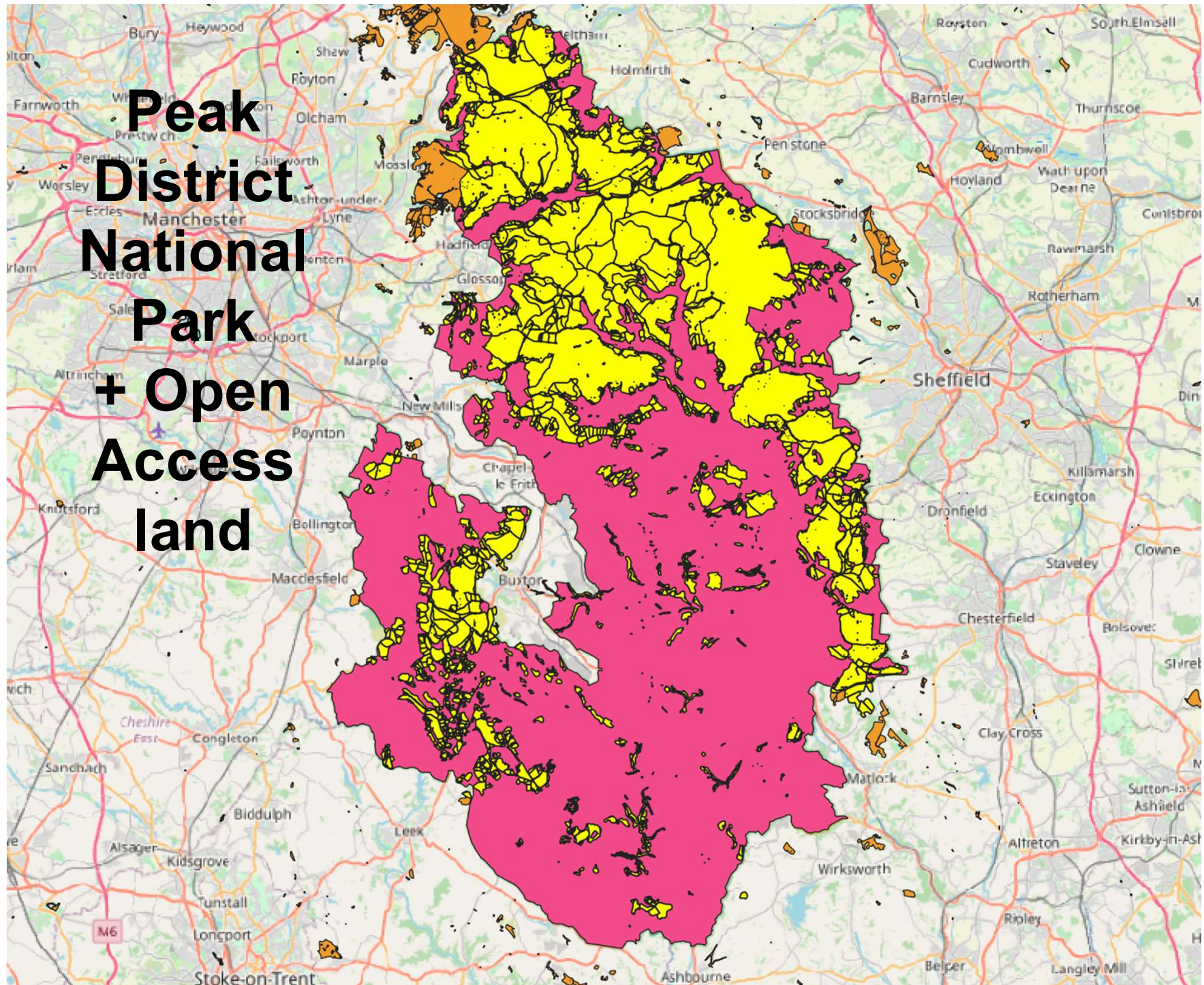
Peak District Local Access Forum

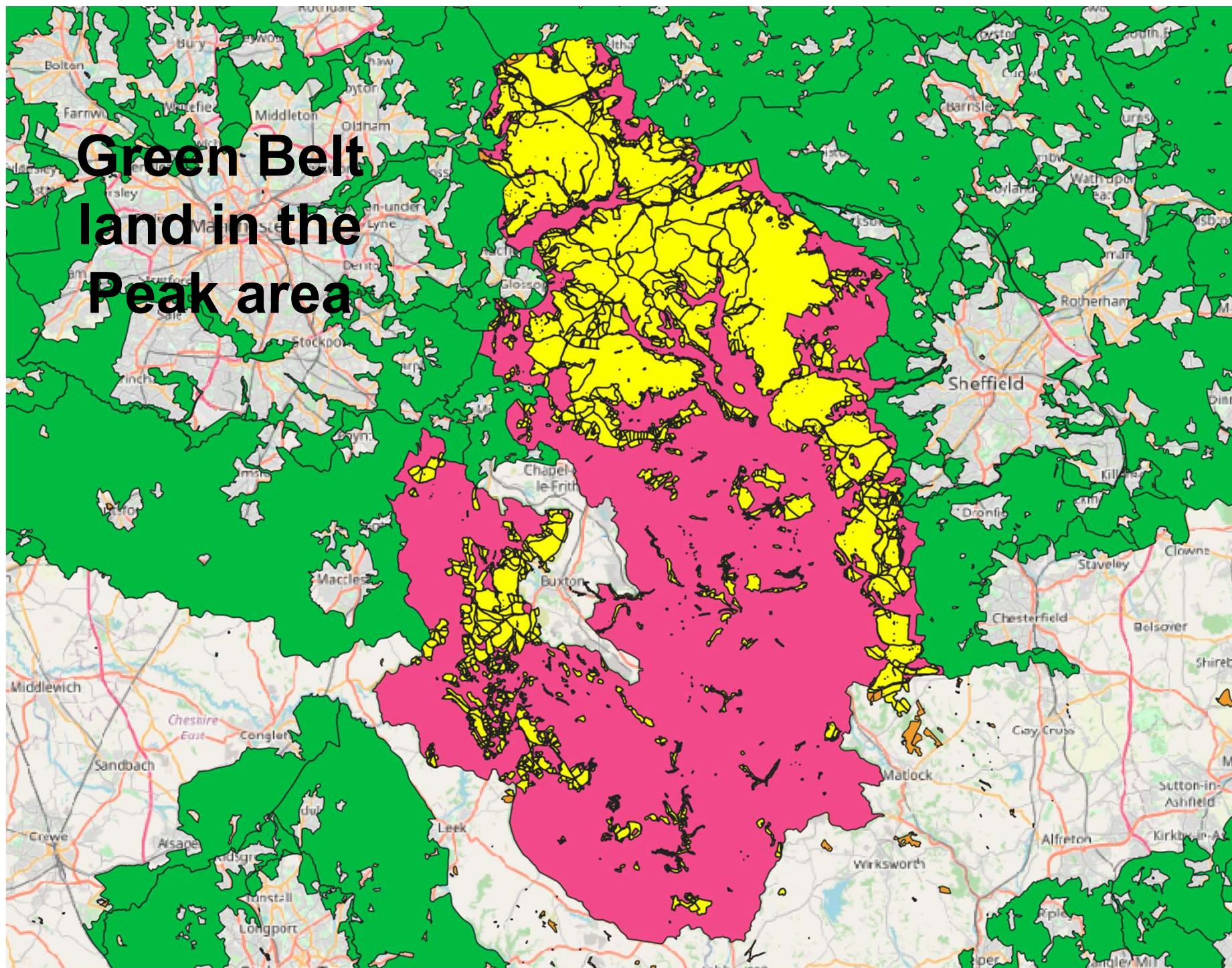
Guy Shrubsole & Nick Hayes

26th February 2021

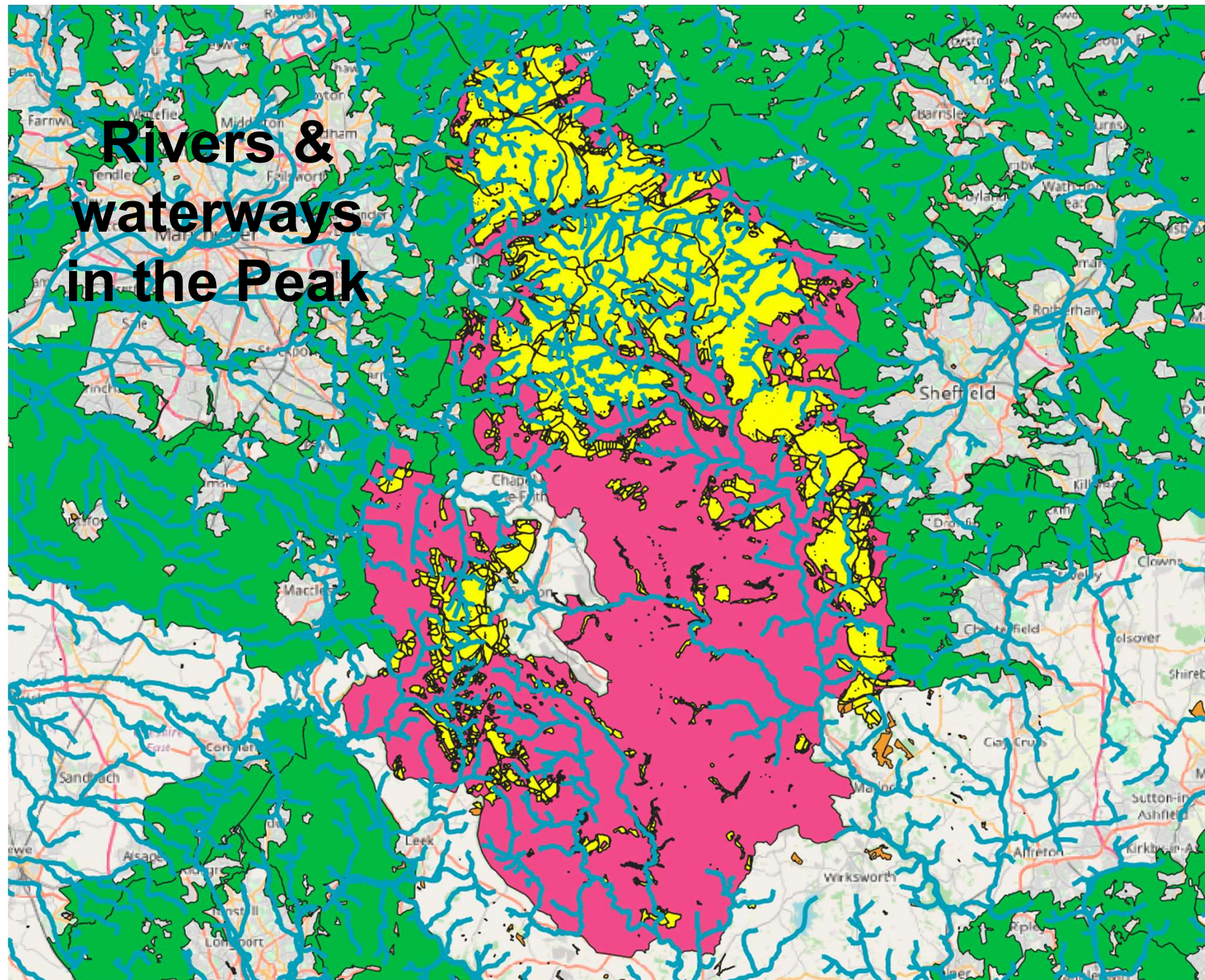


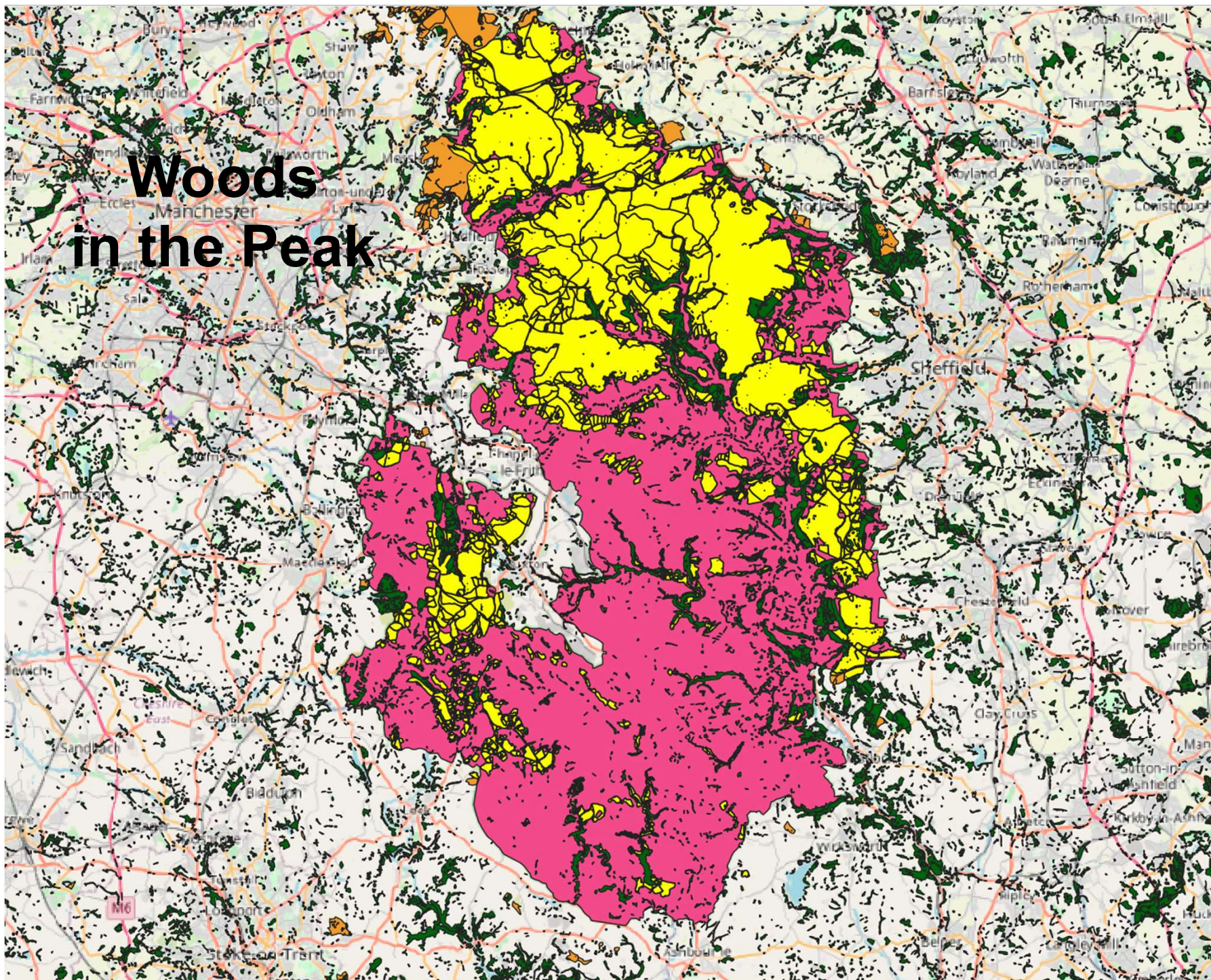
Peak District National Park + Open Access land





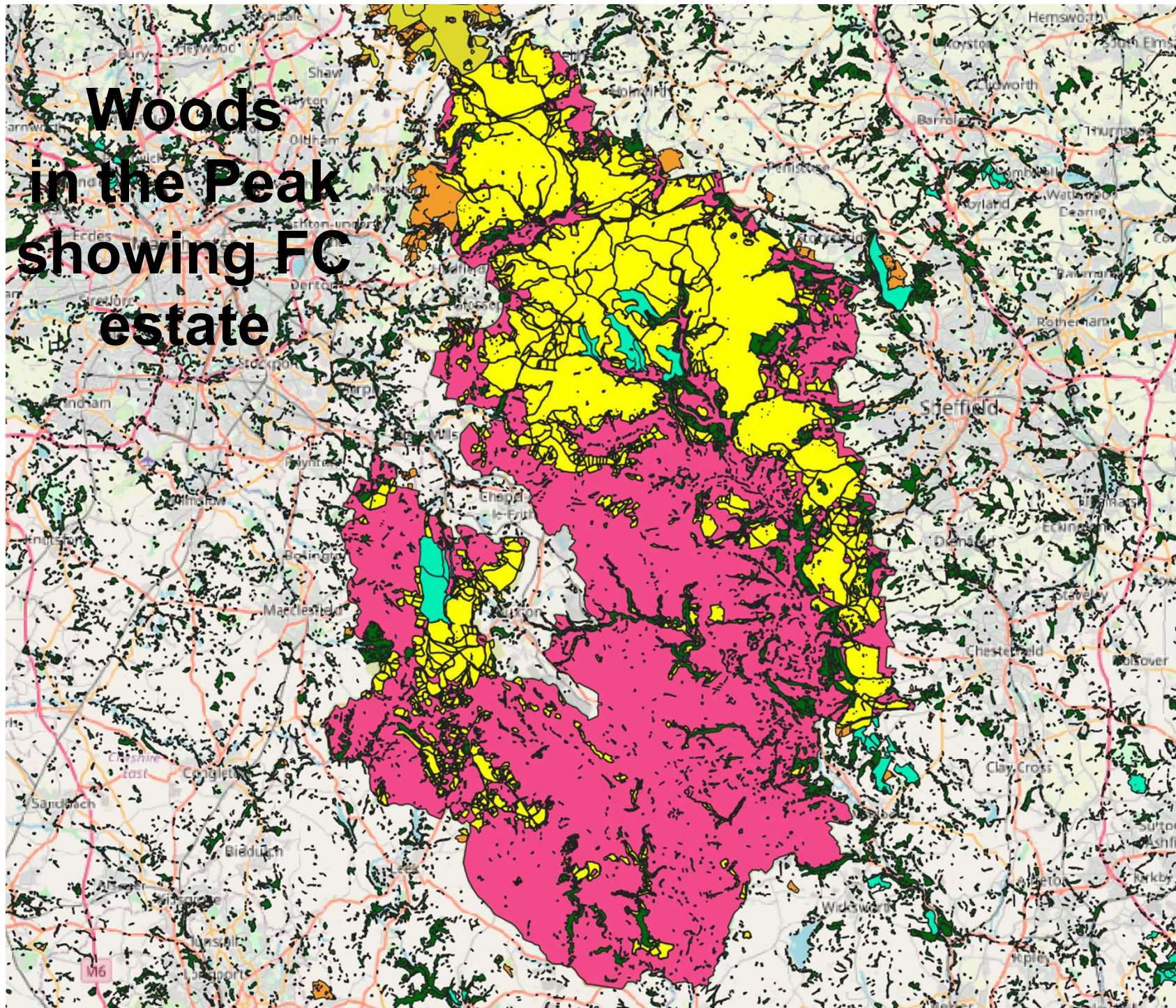
Rivers & waterways in the Peak



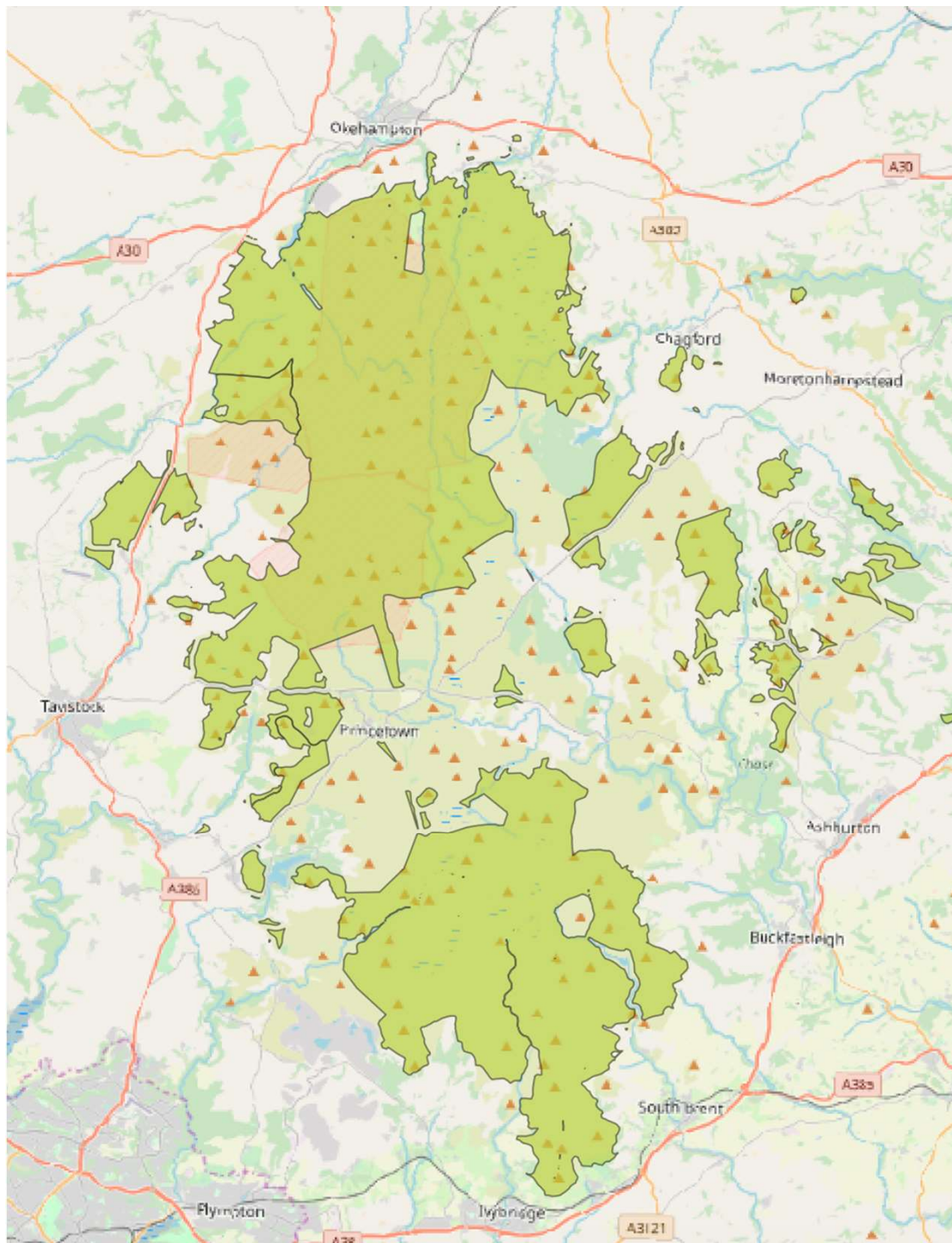


Woods in the Peak

Woods in the Peak showing FC estate



Wild camping: Dartmoor's approach



Peak District Local Access Forum

Date: 11 March 2021

Item: 5

Title: Green Lanes Update

Author: Sue Smith

Purpose of the Report

The report:

- (i) provides an update on progress with looking after Green Lanes in the National Park; and
- (ii) identifies the involvement of the Forum in contributing to the delivery of the areas of work identified in the report.

Background

The Authority's Strategy for the management of recreational motorised vehicles on unsealed highways and off-road, identifies that proposals for its implementation will be set out at any one time in an up to date action plan. The action plans and progress report are produced, reported, and published annually.

In line with the direction set out by the National Park's Management Plan and the Authority's Corporate Strategy, work on accessibility, protecting verges, telling the story of the trails, and promoting Peak District Proud will be used to develop the wider engagement, protection and enhancement of Green Lanes.

Action Plans

The Green Lanes Annual Report provides an update on actions during 2020/21 and is attached in Appendix 1. Action plans for green lanes, illegal use and communications for 2021/22 are provided in Appendices 2-4.

Plans and reports are available at www.peakdistrict.gov.uk/vehicles.

Green Lanes Sub-group

The Forum's involvement is sought in relation to the following detailed areas of work:

- 1) An area-based focus on illegal use at Bradwell Moor
- 2) Signage selection and identification of routes for Keep on Track
- 3) Review of the Green Lane Code applying Peak District Proud principles.

Recommendation

- 1. That the report is noted.**
- 2. That the Forum identifies a date for a future meeting of the Green Lanes Sub group.**

Green Lanes Annual Report 2020/21



March 2021

Green lanes are tracks across the National Park used by walkers, cyclists, horse riders and motor vehicles.

This is our fourth annual report. It reports on the work done in partnership over this last year.

1) Involvement

Keep on Track



Keep on Track involves signage, volunteers and preventative measures to encourage understanding of the impacts that occur and limit them.



Peak District Local Access Forum



In 2020, the Local Access Forum (LAF) held their first virtual meeting, at which we reported the green lanes action planning for wider engagement, protection and enhancement of these valued routes. The Green Lanes Sub-group has built up over 10 years of experience in recreational motorised vehicles and green lanes and will be contributing to the focus on accessibility, protecting verges, telling the story of the trails, and promoting Peak District Proud.

2) Improvements

Repairs by Highway Authorities

In December 2020, Derbyshire County Council completed Phase 1 of their works at Bamford Clough.



In September 2020, Sheffield County Council completed their repairs at the Redmires end of Long Causeway.



In January 2021, Staffordshire County Council consulted on its repairs at Swan and Limer Rake, near Hollinsclough.



Work by National Park Authority

We've been keeping on top of clearing out the gulleys at Long Causeway, Stanage.



In May 2020, we resurfaced the permissive bridleway, which avoids the road between Roych and Chapelgate,



In November 2020, we put in new signage on the track from Eldon Quarry.



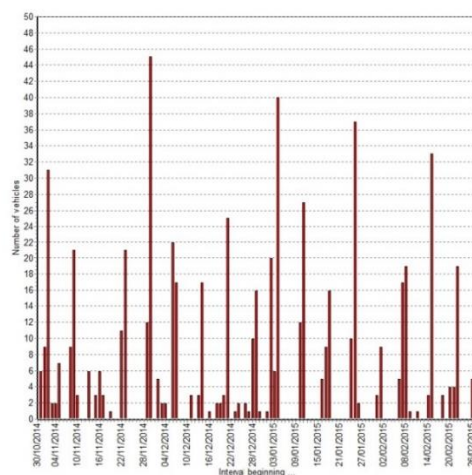
Work by Others

Eastern Moors Partnership took measures in February 2021 to prevent vehicle users driving on verges and adjoining land on the Houndkirk Moors. This action is needed to allow this environmentally-sensitive land to recover.



3) Monitoring & Managing

Data Logging



We use electronic logging devices to monitor vehicle use and share data with the police to enable them to make evidence-led decisions on their operations.

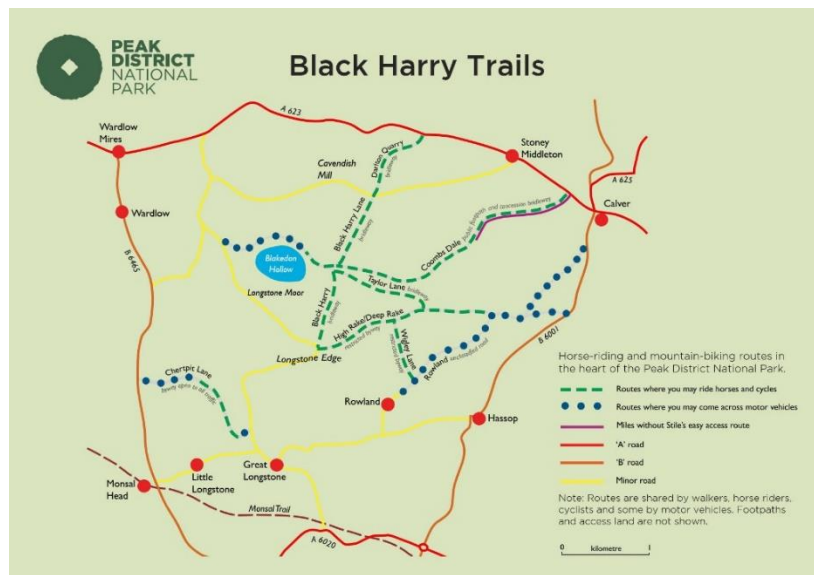
During 2020-21 we have monitored 15 sites. This includes the TRO routes, as well as monitoring at Pindale and Rowter Farm, near Castleton, Black Harry, near Stoney Middleton, Pretty Wood, at Eyam, Fernilee Reservoir, Swan Rake, at Hollinsclough, Moscar Cross, and Clough Lane, at Birchover.

Signage



We've been putting up signage in the Bradwell Moor area to help deal with the illegal use. We are working with partner organisations to manage the escalating impacts in this area.

Education



Ten years ago, we worked with a number of user groups in the Longstone Edge area to highlight routes for cycling and horseriding and routes where there might be motorised vehicles. Since then Derbyshire County Council has clarified the legal status of a number of these routes. More information at www.peakdistrict.gov.uk/blackharry

Enforcement

From February 2020 to February 221, Derbyshire police have investigated over eighty Traffic Offences in relation to illegal use of footpaths/bridleways/TRO routes and farmland. The majority of these have resulted in conditional offers for penalty points. In addition, there have been six reports of criminal damage already this year resulting from people entering onto private land and moorland. This includes five drivers currently under investigation for causing damage to SSSI land after traveling off designated roads and onto private land getting their 4x4's stuck in the heavy snowfall experienced early this year.



4) Restraint and Restrictions

Traffic Regulation Order Exemptions

At Derby Lane there was one exemption to the traffic regulation order issued for caving access to Waterfall Swallet.

Neither the Reliance Cup Trial nor the Bemrose Trial took place at Washgate.

5) Reporting

Action plans to protect the special qualities of the National Park were considered by National Park Members in May 2020 and reported to the Peak District Local Access Forum in September 2020. This report and the current action plans can be viewed at www.peakdistrict.gov.uk/vehicles.

Appendix 2

Peak District National Park Green Lanes Action Plan 2021/22

Engagement

Finding Out

Green Lanes are our trackways across the National Park - a story of people and industry, wildlife and habitats, links to communities, beautiful views, tranquility and inspiration for the benefit of all. They have the potential to be a valuable part of the access and right of way network.

Aim: to embed Green Lanes in the access and rights of way network and the public's consciousness.

Action 2021/22:

- 1) Green Lanes branding as multi-user routes.**
- 2) Content on Green Lanes webpage to be further developed.**
- 3) Green Lanes Communication Plan messages.**
- 4) Waymarking of identified routes.**
- 5) Development of an area-based approach at Bradwell Moor.**

Understanding

Green Lanes can be important for their heritage, conservation, communities and/or recreation. Some routes are key for supporting health and well-being, linking to wider access and for exploration and enjoyment of the special qualities of the National Park.

Aim: to identify what is special about Green Lanes and encourage that understanding.

Action 2021/22

- 1) Sharing the History on the Peak's Packhorse Trails.**
- 2) Using an area-based approach at Bradwell Moor.**
- 3) Considering future inputs based on Green Lanes contributory value.**

Involving

The Peak District Local Access Forum advises on access and recreation, adopts a consensus-based approach, and reflects and disseminates information. An appreciation of issues is required to involve all those using and caring for Green Lanes.

Aim: to identify, appreciate, and manage issues relating to use of Green Lanes.

Action 2021/22

- 1) Action planning and progress reports to the Local Access Forum.**
- 2) Green Lanes Sub group for detailed involvement relating to engagement, protection and enhancement of Green Lanes.**

Supporting

Working in partnership recognises that everyone can make a difference. Volunteering and funding opportunities supports the work on Green Lanes.

Aim: to encourage involvement and for its recognition.

Action 2021/22

- 1) Peak Park Conservation Volunteers involvement in Keep on Track.**
- 2) Partnership involvements for Sharing the History.**
- 3) Funding and donations for access improvements to include Bradwell Moor, Miles without Stiles, Keep on Track and Sharing the History.**

Protection

Use

Some Green Lanes may have vehicle rights, others not. The clarification of legal status is carried out by the Highway Authorities. The Highway Authorities are also responsible for the signing of public rights of way, supported by the Authority.

Aim: to clarify Green Lanes which do not have motorised vehicle rights.

Action 2021/22

- 1) Respond to Highway Authority consultations with any relevant information held.**
- 2) Green lanes waymarking and Keep on Track signage as and where appropriate.**
- 3) Other signage in accordance with Illegal Use Action Plan.**

Monitoring

Vehicle logging is carried out where there is intensification or excessive or inappropriate use or for considering the suitability of routes for accessibility needs. Surveying and auditing is also undertaken to assess changes in condition and suitability.

Aim: to target and prioritise Green Lane actions for protection or enhancement.

Action 2021/22

- 1) Vehicle logging prioritised on Green Lanes in accordance with the Illegal Use Action Plan, Keep on Track, and for contributing to Miles without Stiles.**
- 2) Green Lane surveys and audits as required including Keep on Track, and for contributing to Miles without Stiles.**

Respect

The National Park's Green Lanes Code promotes responsibility by all users. Peak District Proud encourages responsible use.

Aim: for respect for others and the environment and a recognition of impacts.

Action 2021/22

- 1) Local Access Forum input into a review of the Green Lanes Code.**
- 2) Adoption of Peak District Proud approach for Green Lanes.**

Restraint

Voluntary restraint on routes helps to manage impacts.

Aim: for respect for others and the environment and the management of impacts.

Action 2021/22

- 1) Support and monitor proposals for voluntary restraint on Green Lanes.**
- 2) Encourage compliance with Keep on Track.**

Restriction

Where respect and restraint are not proving sufficient to manage impacts, the Authority has similar powers to the Highway Authorities to make Traffic Regulation Orders. The Authority has made seven Traffic Regulation Orders.

Aim: to protect the area in accordance with National Park purposes.

Action 2021/22

- 1) Consider applications for TRO exemptions, and for compliance with the terms on which they may be granted.**
- 2) Keep under review any Green Lanes where a TRO may be a possible course of action.**
- 3) Respond to any consultations on TROs by the Highway Authorities.**
- 4) Facilitate consultation responses by the Peak District Local Access Forum, as required.**

Enhancement

Repairs

Highway Authorities have a duty to maintain Green Lanes. The Authority supports this with the use of volunteers for small-scale works including routine maintenance.

Aim: for ease of use and to protect the environment of the National Park.

Actions 2021/22:

- 1) Identification of works relating to impact on National Park or to meet accessibility requirements.**
- 2) Provision of advice on schemes of repairs and to monitor during and following the works.**

Verge protection

By working with users and other partner organisations, the Keep on Track campaign will help to limit damage to lane verges and help to reinstate any areas of damage.

Aim: to foster respect and recognition of impacts and to mitigate those impacts.

Actions 2021/22

- 1) Funding and installation of signage.**
- 2) Identification of routes and locations for signage in conjunction with Local Access Forum.**

Accessibility

Green lanes can be particularly suitable for accessible routes. Some Green lanes may be suitable for promotion as Miles without Stiles easy access routes. The Peak District National Park's Foundation and Access Fund supports the funding of access improvements and Miles without Stiles.

Aim: to reduce barriers to access and promote opportunities for access for all.

Actions 2021/22

- 1) Surveys and audits of Green Lanes to assess suitability and barriers to access.**
- 2) Funding and undertaking of works to improve access.**
- 3) Promotion of Green Lanes as Miles without Stiles routes, where suitable.**

Appendix 3

Peak District National Park Illegal Use Action Plan 2021/22

Recording Use

Vehicle logging

Vehicle use is monitored using electrical vehicle loggers on Traffic Regulation Order routes, where the legal status has recently been resolved, as prioritised on an area basis, or in response to reports received over sustained illegal use.

Aim: to target and prioritise action.

Action 2021/22

- 1) Vehicle logging on TRO routes and other illegal use routes.**
- 2) Vehicle logging as part of an area-based focus at Bradwell Moor.**

Reporting illegal use

The police take action in response to the reports they receive from the Authority, landowners and the public.

Aim: to target and prioritise action.

Action 2021/22

- 1) Field-based staff to report incidents of illegal use to the police.**
- 2) Website updates to improve the reporting of illegal use, in liaison with the police.**

Enforcement

Erecting & maintaining signage

Signage is required to clarify the legal status of routes, to support the making of Traffic Regulation Orders, and to prevent harm.

Aim: to prevent illegal use and harm.

Action 2021/22

- 1) To erect and maintain signage on TRO routes made by the Authority.**
- 2) To identify routes where there is a need for replacement signage.**
- 3) To identify locations where additional signage is required.**

Police action

Areas of focus for police operations include TRO routes, routes and areas where there are repeated or increasing illegal use, or where there are designations and harm could or is resulting from motorised vehicle use.

Aim: to prevent illegal use and harm.

Action 2021/22

- 1) To continue to identify areas of focus for police activity on an evidential basis.**
- 2) To support police operations, as required, through information, signage or presence.**

Managing Use

Preventing use & remediation

Detailed schemes of action may be identified and undertaken in conjunction with landowners, the Highway Authorities, Natural England, or Historic England, if driving or riding is taking place on or off-road and results in harm to acknowledged interests. The Keep on Track work will also protect verges for their conservation interest.

Aim: to prevent harm and restore the environment and amenities of the locality.

Action 2021/22

- 1) Adopt a partnership approach for inputs into schemes for prevention and reinstatement.**
- 2) Support and contribute to work undertaken for the management of motorised vehicles.**
- 3) Provide advice on impacts on acknowledged interests or accessibility.**
- 4) Facilitate the involvement of the Peak District Local Access Forum and volunteers.**

Accessibility Improvements

Where barriers to accessibility are removed, there is the potential for this to open up an area to use by motorised vehicles.

Aim: to balance accessibility with potential for harm occurring.

Action 2021/22

- 1) Vehicle logging to monitor and assess any resulting illegal use.**
- 2) Consideration of alternative measures, as required.**

Appendix 4

Peak District National Park Green Lanes Communications Action Plan 2021/22

Key Messages

- Green lanes are a valuable part of the access network for a range of different uses and abilities.
- Green lanes provide a sense of place in the landscape, for health and well-being, and for the understanding and enjoyment of nature.
- All users can reduce impact on other users and the environment by using the lanes in a legal, responsible and sustainable manner.
- Partnership working on green lanes will help to contribute to an integrated, maintained, accessible and safe rights of way network.
- Where there is conflict with the conservation of the special qualities of the National Park, action will be taken including the use of TROs as appropriate.
- Illegal use is unacceptable.

NPA's Role & Actions

- Work to conserve and enhance the special qualities of green lanes and the National Park.
- Promote opportunities for everyone to understand, enjoy and celebrate these special qualities in a responsible way.
- Work with Highway Authorities, Peak District Local Access Forum, communities and user groups to identify interests and to minimise impacts of use.
- Support the police in their enforcement of illegal use.

Highway Authorities' Role & Actions

- Carry out their duties in relation to management of use, maintenance, enforcement, signage and determining legal status.
- Support the PDNP purposes and priorities, work together on delivering improvements and have regard to statutory requirements.

Police Role & Actions

- Carry out their duties in relation to enforcement.

Peak District Local Access Forum

- Provide advice and guidance and support public involvement in green lane matters.

Users' Role & Actions

- Use green lanes responsibly and minimise negative impacts on the special qualities of the National Park.
- Promote and implement voluntary actions.
- Implement and promote the Green Lanes Code as part of the wider #peakdistrictproud – Respect Protect Enjoy campaign.

Agenda Item 9

Report for the Peak District Local Access Forum 11 March 2021

Derbyshire's Rights of Way Improvement Plan (RoWIP) - Update

Gill Millward, Countryside Access Improvement Officer,
Derbyshire County Council

Purpose of Report

To present Forum members with an update on progress towards the delivery of Derbyshire's Rights of Way Improvement Plan.

Aim 2: Definitive Map and Statement

- The Joint LAF Unrecorded Ways Sub Group met virtually on 14 January 2021 and the notes of the meeting will be circulated separately.

Aim 3: An improved network

- **Pennine Bridleway National Trail (PBW):**
 - **Maintenance work** has been on-going over the winter months with ditching, drainage and general repairs. Three fingerposts and a waymark post have been replaced at Wormhill. The Volunteer Leader from Groundwork Greater Nottingham has continued to work on DCC sites and Rights of Way, including the PBW.
 - **Development work** has also been continuing on the missing sections around Glossop. A traffic survey has been undertaken on High Lane, near Simmondley to obtain some baseline data for work on the road crossing. A safety audit is to be commissioned once the results of the traffic survey have been received. Discussions to obtain Network Rail Clearances to build the PBW under the railway viaduct at Dinting is progressing well, with an initial 'Business Clearance Certificate' issued to DCC at the end of February. Technical plans and details are currently being collated to enable us to progress with the next stage of Technical Clearances. In parallel with the Network Rail discussions, initial investigative work is being undertaken again looking at possible alternative routes incorporating the newly claimed Bridleways 109 and 128 in Charlesworth. These run off Long Lane northwards under the railway line to the River Etherow.
 - **Funding** - we are in the process of preparing a funding bid for the maintenance of the PBW in 2021/22, as well as further preparatory work for the missing sections around Glossop.
- **Visit. Sleep. Cycle. Repeat:** Work is around 60% complete on the delivery of 6.3km of new and improved cycling trails around Pleasley

(Bolsover District) funded by the Rural Development Programme for England (£404,000). This work should be completed by Spring 2021, but there have been some delays as a result of the recent weather. Temporary closures are still in place while this work is underway. Design work is also being finalised for an additional 1.2km of improvements on the Skegby Trail. This is funded through the County Council's Local Transport Plan (LTP) Capital Programme (£150,000) and includes improving the trail crossing on Batley Lane. Construction should be completed in 2021. An audit of the whole of the VSCR Trails Network (over 220 miles) has assessed the quality and usability of the current network (effectively everything between Chesterfield, Worksop and Mansfield) – we are just waiting to incorporate any of the working groups final comments before the report is published.

- **Little Eaton Branch Line:** We have recently assigned a Project Officer to manage the planning and development of a 5km section of the disused Little Eaton Branch Line as a traffic-free, multi-user route between Duffield Road in Little Eaton and Rawson Green. This work will also involve securing the funding necessary to deliver this crucial element of Derbyshire's Key Cycle Network, helping to provide a direct connection between Ripley and Derby City.
- **Rowsley Bridleway 2:** Improvements to the drainage and surface of Bridleway 2 off the end of Church Lane at Rowsley got underway at the beginning of January and should be complete by the second week in March.
- **Investment:** Funding bids have been submitted for prioritised Rights of Way and multi-user Greenway/ KCN development and maintenance schemes from within the County Council's Local Transport Plan (LTP) Capital Programme for next year. The outcome will be reported to the LAF meetings in June.
- **Active Travel Fund:** The Government has awarded the County Council £1,684,350 to create a new east to west cycle route across Chesterfield to deliver more permanent measures for cycling and walking under Tranche 2 of the Active Travel Fund. The public consultation which will be primarily on-line using the Commonplace community engagement platform is due to open on 8 March and runs until 31 March 2021: www.derbyshire.gov.uk/council/have-your-say/consultation-search/consultation-details/east-west-chesterfield-cycle-route.aspx
- **D2N2 Local Cycling and Walking Infrastructure Plan (LCWIP):** The County Council's Cabinet approved the publication of the consultation draft of the LCWIP for the Derby, Derbyshire, Nottingham and Nottinghamshire area on 11 February 2021. Consultation with stakeholders is expected to take place later in May 2021.

Aim 4: Improve the promotion, understanding and use of the network

- **Cycle Derbyshire:** The new combined map/ leaflet is currently being finalised. We are aiming to achieve an all-purpose cycling map showing

dedicated traffic-free trails and on-road routes, along with towns/ villages, visitor attractions and selected bridleways. The reverse side will highlight cycling opportunities across Derbyshire, both for residents and visitors, for leisure and active travel, with signposting to specific sites and organisations, as well as “share with care” messages. We had a good response to the draft which was circulated in February from a range of partners involved in providing, managing and promoting cycling infrastructure, as well as users of the network, including LAF members. We are taking on board as many of the suggestions as possible to ensure the product is as accurate, inclusive and inspiring as it can be. We are aiming to have 30,000 copies printed by the end of March 2021 and distributed throughout the County in readiness for the reopening of the hospitality sector. This will include supply and replenishment at tourist information/visitor/cycle hire centres, accommodation providers and attractions Derbyshire wide, pubs, cafes and main transport hubs.

- **Derbyshire Cycle Networks:** It is now possible to view the completed and proposed routes for the strategic Key Cycle Network (KCN) and Local Cycle Network (LCN) in a single mapping layer:

www.derbyshire.gov.uk/council/partnerships/derbyshire-mapping-portal/derbyshire-mapping-portal.aspx

The proposed routes are not definitive but represent broad corridors where a range of possible alignment options may need to be considered. These will be subject to more detailed feasibility studies, as well as further consultation and discussions with landowners etc. Wherever practicable, it is intended to develop these as shared multi-user routes for walking, cycling and horse riding, as well as wheelchair users, mobility scooters and pram pushers.

Ashbourne Traffic Options: Following the public consultation which closed on 18 December, Cabinet has agreed that the Western Bypass Option A, which has an impact on the Tissington Trail, be confirmed as the preferred scheme. Cabinet also agreed to receive a further report on the costs of work towards a planning application and on potential funding for the preferred scheme. The 885 consultation responses which were received are set out in detail in Appendix 2 of the Cabinet report which can be viewed here: <https://democracy.derbyshire.gov.uk/documents/s5974/6g%20A515%20Ashbourne%20Transport%20Study%20Preferred%20Option%20Selection.pdf>

Recommendation: That Forum Members note this progress report for delivering Derbyshire’s Rights of Way Improvement Plan.

This page is intentionally left blank