



Peak District Local Access Forum

On: Thursday 15 September 2022

At: Aldern House, Board room

Agenda

Start: 10.00 am

1	Welcome and Apologies	Mike Rhodes
2	Minutes from the last meeting, 16 June 2022	Louise
3	Engaging Young People - Presentation	Jo Holliday, Luisa Knust
4	Staffordshire Rights of Way Issues	Andy Farmer
5	Access Update	Sue Smith
6	Derbyshire CC RoWIP Update	Gill Millward
7	Members' Reports including: Trails Mgt plan (Charlotte) Sheffield LAF (Louise) BMC Crag and Upland Restoration Fund projects (Louise)	
8	Any Other Business - notified to Mike in Advance	Mike
9	Date of next meeting - 1st December 2022	

This page is intentionally left blank

Peak District Local Access Forum

Minutes of the Meeting held on Thursday 16 June 2022 at Aldern House, Board room.

Members Present:

Charlotte Leech
Martin Bennett
Richard Entwistle
Louise Hawson
Geoff Nickolds
John Towe

Craig Best
Ben Seal
Clare Griffin
Austin Knott
Paul Richardson

Others Present:

Mike Rhodes, (PDNPA) (Secretary)

Sue Smith, (PDNPA)

27. WELCOME AND APOLOGIES

Apologies had been received from: Cllr Ian Huddleston, Charlotte Gilbert, Jo Holliday, Jez Kenyon, Alastair Harvey, Cllr Susan Hobson, Joe Dalton,

Austin Knott was welcomed to the meeting as a new Member to the Local Access Forum and was asked to say a few words by way of introduction.

The Chair then invited all Members to introduce themselves for the benefit of Austin.

28. MINUTES FROM THE LAST MEETING, 17/03/2022

The minutes of the meeting on the 17th March 2022 were approved as a correct record.

Matters Arising:-

Landscapes Review:-

The Chair reported that a letter responding to the Government proposals had been sent in from Charlotte Gilbert on behalf of the LAF, but as yet there was no specific update on the Landscapes Review but would keep the LAF updated. Thanks to Charlotte for putting the response together on behalf of the LAF.

Ben Seal reported that he had attended DEFRA's National Access and Engagement Stakeholder Forum recently and informed the LAF Members that DEFRA was deciding actions and what legislative avenues they were going to use to take this forward. He would provide an update to Members on the discussions that took place in due course.

29. PROPOSED LAF PRIORITIES AND ACTIVITIES

The Chair reported that she had recently met with Martin Bennett and Charlotte Gilbert (Vice Chairs of LAF) to think about the priorities and the broad work streams that the LAF may want to concentrate on over the next year, as part of the LAF's Forward Plan.

The Chair reminded Members about the LAF's main purpose and role which was to advise

on the improvement of public access to land in the National Park (and NW Derbyshire) with a focus on open-air recreation and enjoyment of the area.

The Chair then gave a presentation to Members on some of the things that the LAF have to be consulted on which are:-

- Rights of Way Improvement Plan, which Gill Millward from Derbyshire CC updates the LAF on at each meeting
- Long Term Directions – which exclude or restrict access to access land for a period which exceeds 6 months – eg Silence Mine, TRO's etc
- Byelaws made in respect of Access Land – although new ones have not been done since CRowAct
- Wardens for Access Land – now called Rangers and the provision of Ranger and engagement type services across Access Land
- Dog Control Orders
- Gating Orders

The Chair then reported that following the meeting with Martin and Charlotte, 6 LAF work streams were agreed upon which were:-

Ensure we are contributing effectively to statutory and other consultations

Proactive approach to PROW network improvement

Address strategic access topics, especially those issues not being addressed elsewhere, or where we can have the most influence

Ensure meetings run smoothly, and members are informed, can contribute to discussions and get something from being on the LAF

Stabilise/increase membership and get input from a more diverse range of voices

Build our links with other LAFs, access organisations and statutory bodies

Members asked whether other Counties/District Councils could be invited to the LAF Meetings and could the LAF try to get more young/ under-represented groups involved for a more diverse range of voices? Mike reported that the Staffs LAF had lapsed since the pandemic but that he would try and re-engage with them; Charlotte attends DADLAF and Louise will attend Sheffield LAF meetings. Members said that getting youngsters to come to a meeting in the daytime, when they are probably at University etc was not easy but one solution could be to have remote meetings or site visits with other groups.

The Chair then asked if any Member of the LAF had any further thoughts on what was presented and if so then to please send them through.

Members found the presentation useful to remind them of the role and purpose of the Forum. Paul asked if a one-page summary of the role and priorities of the LAF could be produced for Members to share with colleagues and prospective members, to better explain what we do.

ACTION: Chair to produce final forward plan, and one page summary of LAF role and priorities, and share with Members before the next meeting.

30. SUSTAINABLE TRANSPORT

Tim Nicholson, Transport Policy Planner attended the Forum and gave a presentation to Members on the Sustainable Transport Initiatives.

Members were concerned that people – particularly older people - were becoming more isolated because of the lack of bus services. There are certain areas of the Park that do not have a regular bus service, and that car ownership inside the Park was higher than outside

and a shift was needed to get people back onto public transport.

Members felt that communication was the key to change the behaviours of people and make them aware of the services available, which will then hopefully encourage them to leave their cars at home.

Connectivity was also an issue and Rail Partnerships need to work with Bus Companies on connectivity to ensure they work. People with disabilities have great difficulty getting around the Park so joined up working was needed with transport groups to help people get from A to B.

Members asked whether there were any plans to continue with the Hope Valley Explorer as this was the final year of the pilot project? Tim reported that due to the high passenger numbers, it was hoped that the project would continue in some form next year, and that they were hoping to secure funding to expand the network to reach other areas of the Park.

Tim said that there were plans to hold a Symposium on sustainable transport in the Peak District in the next few months, and that the LAF would receive an invitation for members to attend.

The Chair thanked Tim for his presentation and said that the Local Access Forum would do its best to support work on sustainable transport, and provide input from an access perspective where possible.

Can we circulate Tim's slides with the minutes?

31. DCC ROUTE MAINTENANCE AND REPAIRS INC SUB-GROUP REPORT

Sue Smith had circulated the notes from the two sub-groups which had taken place in April 2022. During those two meetings 24 schemes were presented by DCC for - works on its routes, with the LAF identifying site visits to three of these. The Forum were also notified that works have now been completed on three routes; School Lane, Nether Bretton, and Sough Lane.

The Chair reminded Members that DCC had taken the decision to consult with the LAF on its programme of works on routes in the National Park and that further reports on progress with these works would be welcomed.

ACTION: LAF & DCC to set up site visits to the proposed schemes at Hope Cross, Dirtlow Rake and Edensor.

32. DERBYSHIRE RIGHTS OF WAY IMPROVEMENT PLAN UPDATE

Mike Rhodes introduced the report that had been circulated by Gill Millward as she was unable to attend the meeting.

Mike then went on to highlight the following items of information within the report that related to the Peak District National Park.

Derbyshire Cycle Network Development 2022/23

White Peak Loop – DCC is developing a circular route covering just over 87km between Matlock and Buxton of which 71% is now complete. Work is underway to progress the missing sections from High Peak Junction to Rowsley, Rowsley to Bakewell through Haddon Estate and Wyedale/Woo Dale to Buxton.

Pennine Bridleway National Trail

Monks Road, near Charlesworth is one of the three remaining sections of the Trail still to be completed around Glossop, and efforts are being concentrated on identifying potential sources of external funding.

DCC All Roads completed a section of the Trail off Monks Road involving re-profiling the track, installing gates and repairing walls.

Funding has been secured to progress the feasibility and design work required for the missing section around Gamesley. Volunteers have been involved in erecting waymark posts, cutting back vegetation and clearing drains to help prevent water damage on some of the steeper sections of the route.

Derwent Valley Cycleway

The County Council is funding a feasibility study to investigate route options for the Derwent Valley Cycleway between Shardlow and Hathersage.

Mike asked that if Members had any questions on the report, to send them in and they would be passed on to Gill for a response.

Members asked for an update on the routes that the Forum had visited at Brushfield, Pindale and Jacobs Ladder. Mike reported that the material that had been put down at Brushfield had since washed off; no further works had taken place on Pindale as the materials had been removed from site, and no further work had taken place at Jacobs Ladder, but further discussions with the National Trust were due to take place.

Louise asked if these routes could be included on the list of routes that the LAF receives updates on from DCC.

33. ACCESS UPDATE IN ACCESSIBLE PEAK DISTRICT ANNUAL REPORT AND ACCESS FUND ANNUAL REPORT

Sue Smith had tabled a report with updates on issues related to access in the Peak District.

Silence Mine Direction

Following a recent consultation, the Peak District National Park Authority has agreed to continue to extend the public exclusion at Silence Mine up to 30th April 2023, due to the ongoing instability on the site. Planning applications setting out details of the reinstatement works are expected.

Accessible Peak District

The Accessible Peak District Annual Report was circulated to all Members and is available to view at www.peakdistrict.gov.uk/accessforall. Sue reported that the "Miles Without Stiles" webpage had received over half a million views over the last 2 years and that further works on these routes were supported by the Peak District Foundation, who had raised £10,000, and the repeat sponsorship from Yorkshire Water

Sue also reported that so far 36 Anniversary Gates have been installed, funded by donations to the Access Fund. More improvement works have been taking place along the length of Fernilee Reservoir as part of the South West Peak Landscape Partnership and in the Longdendale Valley as part of the Landscape Enhancement Initiative.

Access Fund

Donations had been received from the Peak District Foundation as well as from individuals including Members of the LAF, which have been used towards accessibility improvements at

Conksbury to commemorate former Chairs of the LAF, Edwina Edwards and John Thompson when they stepped down as Chairs of the Forum.

24 Anniversary Gates were also funded during 2021 together with surfacing improvements and signage.

Farming in Protected Landscapes (FiPL)

Sue reported that 72 projects had been supported in the first year of the FiPL funding, and that a number of those projects supported access. She then went on to highlight specific projects at Thors Cave and Castleton.

Charlotte Leech reported that she will take progress pictures of the work on the access to Thors Cave, which includes work on the access paths, installation of fingerposts and signage so that Members were kept updated.

34. MEMBERS' REPORTS

35. MEETING WITH BARRY LEWIS

Martin reported that he, Jez Kenyon and Charlotte Gilbert had met with Cllr Barry Lewis, Leader of Derbyshire County Council, together with Rob Greateorex and Steve Hollingworth to look at the Byway Open to All Traffic at Bonsall and the resurfacing work that had taken place there. It was a good opportunity to promote the work of the LAF, build relationships and to thank them for their investment into rights of way.

36. ANY OTHER BUSINESS - NOTIFIED TO MIKE IN ADVANCE

Engagement Service – Business Case Review

Sarah Wilks, Head of Engagement joined the meeting and was invited to give an update to the Forum regarding the restructure and future of the Engagement Service.

Sarah informed Members that a Business Change Consultant had been appointed to look at the whole Engagement Service and suggested some recommendations. She was now in the process of following those recommendations up and exploring them further before deciding what to do next. One of the recommendations was to look at some of the teams in the service and how they can work more effectively together, which included the Ranger Team, Access & Rights of Way Team and Peak Park Conservation Volunteers (PPCV) and look at how they could be brought together into one super team and the advantages that that will have, so she is thinking about what that structure will look like.

She confirmed that this was an uncertain time for the staff in those teams, but she couldn't go into any more detail on that at the moment.

Sarah then informed the LAF that they were very busy doing the new National Park Management Plan for April 2023 onwards, and that the Authority Plans would sit directly under that, so a lot of the things that had been talked about today at the Forum would sit within those new plans.

The Chair thanked Sarah for her update on the Engagement Service restructure, and for attending the meeting at such short notice.

Members' Claims

Mike reminded Members that they were entitled to claim mileage for attending the Forum

meetings and that the claim forms were available on- line, or if anyone wanted a paper copy then he could make them available. Mike will send an email to all Members to remind them.

37. DATE OF NEXT MEETING - SEPTEMBER 15TH

Peak District National Park

Sustainable Transport

Presentation to the Peak District Local Access Forum

16th June 2022

by

Tim Nicholson

Transport Policy Planner for the Peak District National Park Authority

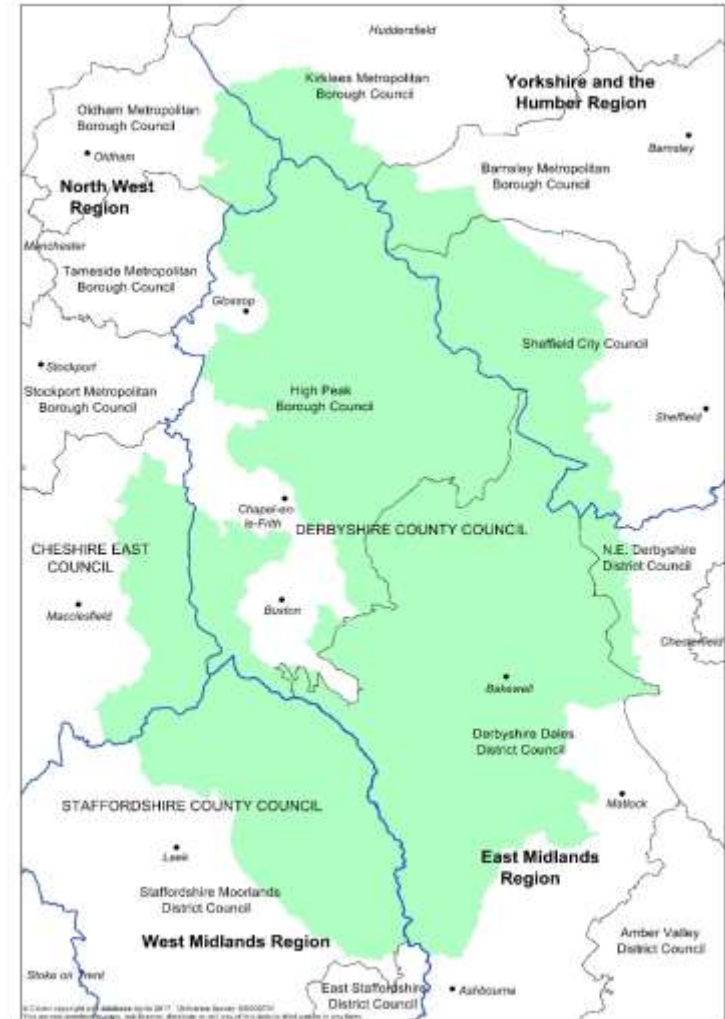
Key Issues

- 14.9 million visits of 3 hours or more in 2019
- Prior to the pandemic 83% of visits made by private car/van
- Overall, public transport patronage has fallen as a result of the pandemic
- Over recent years there has been a general decline in public transport provision – made worse by the pandemic
- Those without access to a private car would find it almost impossible to visit many popular areas of the National Park.
- Transport remains one of the major contributors to carbon emissions and climate change within the National Park.



Background information

- Between 13 and 26 million visits per annum
- 16 million people live within a 1 hour drive by car
- 7 Highway Authorities
- 6 Transport Authorities
- 2 sub-national transport bodies
- The Covid-19 pandemic has driven the desire to reconnect with nature.



Glover Landscapes Review

- Proposal 19: A new approach to coordinating public transport piloted in the Lake District, and new, more sustainable ways of accessing national Landscapes
- Government response –
 - the government supports the Lake District National Park Authority and Cumbria County Council developing new sustainable ways to access the National Park that may transform public transport in the area and become a blueprint for other protected landscapes.
 - Many protected landscapes require bespoke transport arrangements. For example, Peak District National Park Authority, with South Yorkshire Combined Authority and Derbyshire County Council, are to consider new types of Demand Responsive Transport (DRT) services.



Landscapes Review

All our protected landscapes have a unique character and it is our duty to ensure that this character is preserved and enhanced for future generations.

Environment
Department



Current projects

- Hope Valley Explorer
 - 2,600 passengers in 2019 (62 per day)
 - 1,811 passengers in 2021 (60 per day)
 - 687 passengers in 2022 (69 per day)*
- White Peak Loop
 - Visionary circular route of 54 miles (86km)
 - Incorporating the Monsal and High Peak Trails
 - Largely completed but with significant gaps
- Recreation Hubs
 - Recreation hubs offer the opportunity to ensure that future development is accompanied by opportunities to enhance sustainable access to, from and between neighbouring sites; and the public transport network.



Current projects

- **Bus Service Improvement Plans**
 - Six covering the Peak District
 - Derbyshire – successful
 - Greater Manchester – successful
 - West Yorkshire – successful
 - Cheshire East – unsuccessful
 - South Yorkshire – unsuccessful
 - Staffordshire – unsuccessful
- **Demand Responsive Transport**
 - Moorlands Connect ; *“Focused on the rural area between Leek, Ashbourne and Buxton, nearly two-thirds of the scheme’s area is within the Peak District National Park.”*
- **Travelling Light Project (HVCA)**
 - Launched in July 2021 - aims to bring about transformative and sustainable change in the way local people and visitors travel to, from and within the Hope Valley.
 - Through promoting walking and cycling for everyday purposes, encouraging the use of bus and rail, and reducing the current dependency on vehicles powered by fossil fuels.
 - Financial contribution from the National Park Authority
 - Awarded £120,000 by the DfT for 2022/23

Ambition

Four main areas of focus: -

1. Revenue Funding

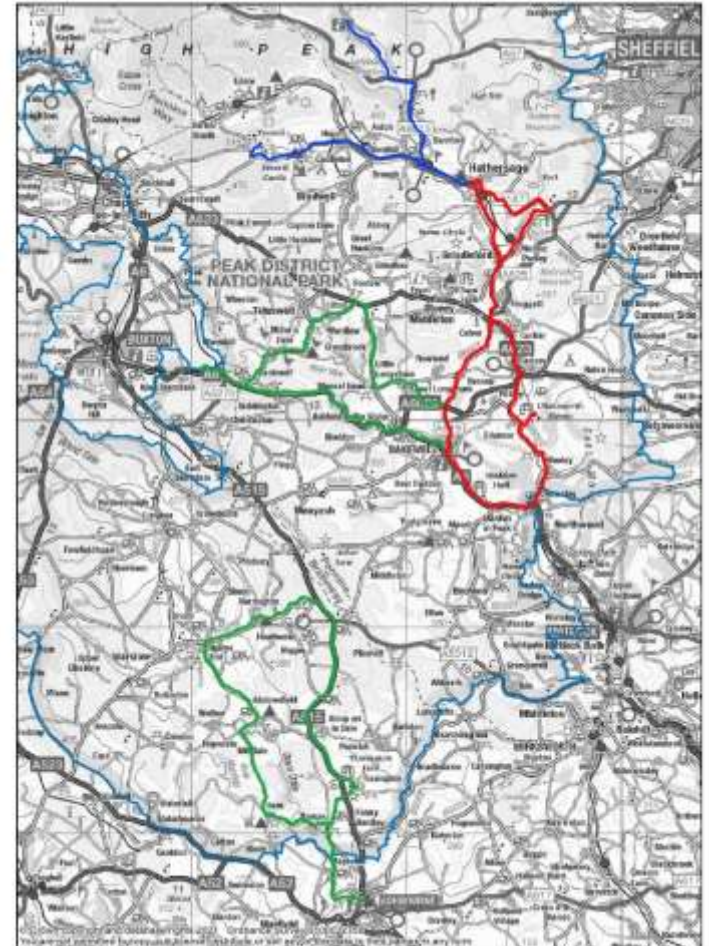
- Project Officer
 - Partnership based
 - Coordinating role, working with constituent transport and local authorities and other partners
 - Focussed on sustainable transport to, from and within the National Park
 - Minimum of five years funding required
 - Linked to National Park Management Plan

Ambition – starting small and scaling rapidly

2. Capital Funding

a) The Explorer Network

- A series of interconnected routes
 - Hope Valley Explorer
 - Heritage Explorer
 - Trails and Dales Explorer
- Focus on the experiential offer for visitors
 - Hop-on-hop-off ticketing
 - On-board commentary
 - Discounted entry to visitor attractions or other offers.
 - Multi-day tickets



Ambition

2. Capital Funding

b) Peak District Connect (Demand Responsive Transport)

- Providing access to locations not currently served by public transport
- Pick-ups from key interchanges to the west of Sheffield
- Interconnections with existing fixed route bus and train services
- Operating in the east of the Peak District
- Opportunities for this approach to cover other parts of the National Park



Ambition

2. Capital Funding

c) Complete the White Peak Loop

- Buxton Rail Station to Fairfield Common (1.5km)
- Coombs Road, Bakewell to Rowsley (3.9km)
- Matlock Rail Station to Cromford (7km)
- Harpur Hill to Ladmanlow via HSE land (3.6km)
- Ladmanlow to Macclesfield Road, Buxton (1.7km)
- Macclesfield Road to Buxton Rail Station (1.8km)

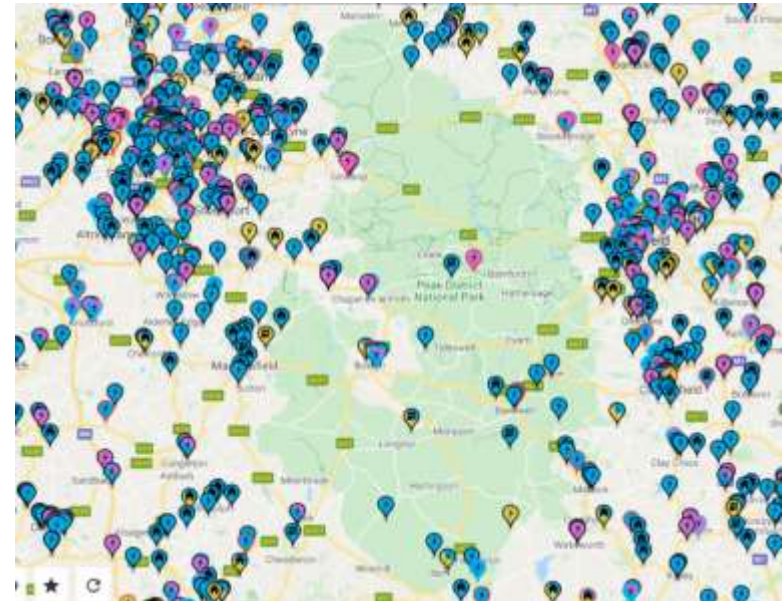


Ambition

2. Capital Funding

d) EV charging points

- Low numbers of publicly available EV charging points in the National Park
- The National Park Authority is not eligible for local authority grants
- Limited power supply in many NP car parks
- Many Peak District car parks do not have a sufficient resident catchment to be considered for grants.

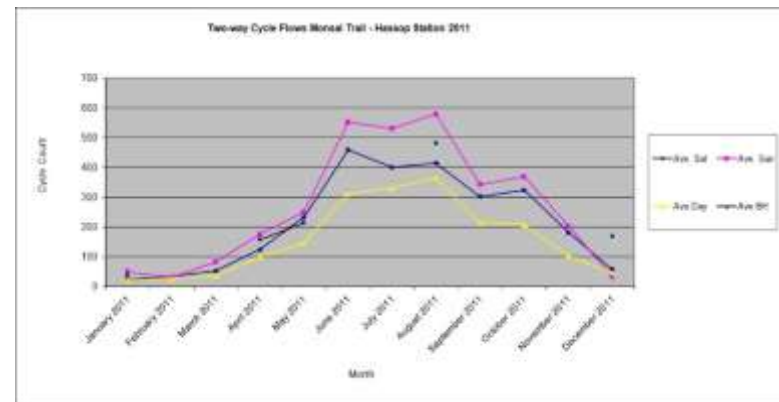
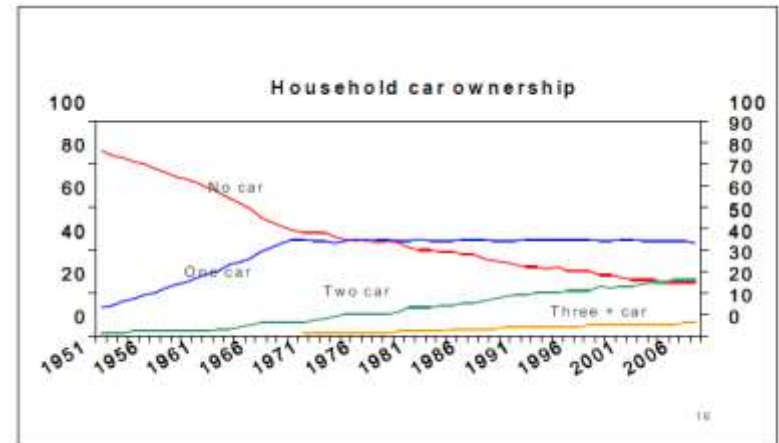


Ambition

3. Data

- Traffic flows
 - Automatic counters
 - Cordon counts
- Walking and cycling
 - Automatic counters
- Questionnaire surveys
 - Interview surveys
- Mobile phone data

Plus the resource to analyse the data



Ambition

4. Leadership

The Peak District Sustainable Transport Project will require strong leadership that can bring together a range of public and private partners for the benefit of the National Park, it's residents, visitors and businesses.

The Peak District National Park Authority is the one body established to deliver national park purposes within the Peak District. Therefore, the leadership role rests with this Authority.

Transport Symposium

- Following on from the P&R Report in January 2022
- Summer 2023
- Involving: -
 - Constituent transport authorities
 - Transport operators
 - Wider stakeholders
- Seeking: -
 - Political support
 - Financial support
- Aligned with National Park Management Plan



Benefits

- Air quality
- Economic
- Climate change
- Inclusivity
- Wider environmental
- A good range of commonly branded public transport services accessing the National Park.
- Economic benefit for rural businesses

This page is intentionally left blank

Peak District Local Access Forum

Date: 15 September 2022

Item: 5

Title: Access Update

Author: Sue Smith

Purpose of the Report

The purpose of this report is to provide an update on issues related to access in the Peak District.

Access Funding

A [report](#) on the support for improving access infrastructure in the National Park was taken to the September Authority meeting. An update on our work on accessibility will be provided to the December Forum meeting.

Fire Directions

In July 2022, the fire risk was exceptional which activated fire directions temporarily closing Access Land across the National Park for a number of days.

Details of all restrictions can be found on [Natural England's website](#). Annual restrictions are reported at www.peakdistrict.gov.uk/crowrestrictions.

Upper Derwent

A section of the route along the western edge of the Derwent and Howden reservoirs is temporarily closed for 3 months to allow for tree felling for larch disease control. During that time, public access along the road, on public rights of way in the areas affected, and for access to and from adjacent Access Land will not be available for safety reasons.

A map is attached in Appendix 1 showing the extent of the works, closures, and alternatives. The [Visitor Centre](#) and [Cycle Hire](#) remain open and the [Miles without Stiles route](#) is unaffected.

More information on Severn Trent's [website](#).

Recommendation

- 1. That the report is noted.**

Appendix 1



Peak District Local Access Forum

Date: 15 September 2022

Item: 6

Title: Derbyshire's Rights of Way Improvement Plan (RoWIP) - Update

Author: Gill Millward, Countryside Access Improvement Officer, DCC

Purpose of Report

To present Forum members with an update on progress towards the delivery of Derbyshire's Rights of Way Improvement Plan.

Aim 1: Existing Rights of Way Network

- **Surface condition and drainage:** Work is underway with funding secured through the Highways Capital Programme (LTP) for a package of schemes on 239 individual paths across the county. These range from minor repairs/ vegetation clearance to substantial drainage and resurfacing projects which require more detailed design and preparation. Almost 40% of schemes have already been completed and a further 20% issued to the construction team. The remainder are under investigation with a target to be delivered by the end of March 2023. Progress with regard to the schemes which the Peak District LAF Sub-Group has been consulted on and is following with particular interest is set out in the table below
- **Roadside signposting:** Funding has also been allocated to install around 1,120 roadside signposts across the rights of way network in 2022/23. To date, 349 signposts have been installed and a further 403 issued to the construction team

Route	Location
Works completed	
Foolow Byway Open to All Traffic (BOAT) 20	Nether Bretton to BOAT 27
Hartington TQ Bridleway (BW) 42 and Footpath (FP) 28	Beresford Dale
Hucklow BOAT 18	School Lane, Hucklow
Taddington BOAT 70	Sough Lane, (part of Limestone Way)
Works issued to contractor	
Bonsall BOAT 64 and 71	Blakelow and Blakemere Lanes
Calver BW 30	Calver BW 30 and Bramley Lane

Castleton FP 20	Tor House to Hollins Cross
Castleton FP 21	Hollowford Road to Hollins Cross
Charlesworth FP 52	Path linking to the Trans Pennine Trail
Eyam BOAT 25	Sir William Hill Road to Edge Road
Great Longstone BOAT 52	Blakedon Hollow Lagoon
Calver FP 13	Stoney Middleton to Bramley Lane/ Coombsdale
Eyam FP 28 & BOAT 34 and Grindleford Restricted Byway (RB) 32	Riley Lane
Stoney Middleton BW 17	Moisty Lane to Black Harry Lane
Scheme designed – ready to issue	
Baslow Road	Bakewell FP20 and Baslow Road
Castleton BW 22	Hollowford Road to Hollins Cross
Green Lane Middleton	High Peak Trail to Green Lane
Scheme designed	
Edensor BOAT 13	Claimed BOAT from Hadley Road to Chatsworth house
Funding bid for 2023/24	
Castleton BW 40	
Hayfield BW 47	Kinder Reservoir
Hope BW 32 & BW 5	Low Barn and Brinks Road to Hope Cross
Macclesfield Old Road	Bridge Car Park to Buxton
Peak Forest BW 55	Eldon Quarry

Aim 2: Definitive Map and Statement

- In terms of dealing with the backlog of Definitive Map Modification Order applications, an order adding a footpath in Denby between Church Street and Footpath 20 was not confirmed after being referred to the Planning Inspectorate. The order for a bridleway between Lathkill Dale and Back Lane, Conksbury has been confirmed by the Secretary of State with modifications which will require advertising. A Public Inquiry is due to take place on 13 September, to consider the order to upgrade Eaton and Alsop Footpath 13 to bridleway between Liffs Road and the county boundary with Staffordshire where it continues as a bridleway into Alstonfield. An order upgrading several footpaths to Restricted Byways from Stoke Ford near Bretton Clough in the Parishes of Eyam and Eyam Woodlands will be dealt with by written representations

- **Project 2026 Derbyshire:** Volunteers are continuing to investigate historic, unrecorded routes. According to the British Horse Society's database, research records have been created for over 356 paths across Derbyshire, with 190 claims for Definitive Map Modification Orders (DMMOs) already submitted to the County Council
- **Joint DADLAF/Peak District LAF Unrecorded Ways Sub-Group:** a further meeting of the Sub-Group is being arranged for October time to discuss the issues around the prioritisation of DMMO applications

Aim 3: An improved network

- **White Peak Loop (WPL):** Work is continuing to progress feasibility and design on key missing sections of the route from High Peak Junction, near Cromford to Matlock, Rowsley to Bakewell through Haddon Estate and through Buxton to Harpur Hill. Following a meeting with Aecom, the report is now being finalised for the section from the end of the Monsal Trail via Wye Dale/Woo Dale to the A6 on Fairfield Common in Buxton where construction of the Hogshaw Roundabout is underway and will accommodate road crossings for WPL users
- **Derwent Valley Cycleway:** Route audits are now complete for Segment 5 from Matlock to Hathersage and a draft report issued for comment. A report has also been produced which identifies any environmental assets/ constraints eg heritage and biodiversity within 500m of the 54km route, including possible alternative and linking sections. This identifies the key risks and makes recommendations for further work eg consultation, surveys and mitigation measures
- **Pennine Bridleway National Trail:** The annual condition survey of the Pennine Bridleway and Pennine Way is currently underway and will be used to identify any maintenance or improvements required to achieve the quality standards for a National Trail. The results will also inform work planning and budgeting for 2023/24. In Derbyshire, routine maintenance continues with the replacement of several gates on The Roych, as well as the continued renewal of waymarks and fingerposts along the entire route. Groundwork volunteers have been busy helping to replace fencing at Hayfield, with surfacing work by the river at Wyedale and dealing with on-going drainage issues. Initial investigation work is being undertaken to look at improving the A626 Glossop Road railway bridge and upgrading Charlesworth Footpath 115, as a possible alternative to the approved route of the Pennine Bridleway under Dinting Viaduct. This may prove to be a cheaper and more viable option but is not without its challenges
- **Little Eaton Branch Line:** A community engagement event is due to take place at the O.A.P Hall, Barley Close in Little Eaton on Wednesday 28th September to capture local opinion, answer queries and concerns and seek public support for the scheme prior to submitting a planning application. A simultaneous online consultation will be available for anyone who may not be able to attend this event in person. The Little

Eaton Greenway Supporters group is assisting with advertising and promotion of the event, as well as undertaking volunteer work party days to manage the vegetation and litter along the section through Little Eaton. Funding is being sought from the Highways Capital Programme to begin site clearance and resolve encroachment issues in 2023/24

- **Bolsover Loop to Trans Pennine Trail:** Project design is underway to deliver a missing section of the Key Cycle Network between Markham Vale and the Trans Pennine Trail at Staveley. Preliminary investigations and discussions with landowners are planned for the coming months. Funding is being sought for construction in 2023-24. This project will provide a continuous shared route connecting the Clowne Greenway to Poolsbrook Country Park and the Trans Pennine Trail
- **Visit. Sleep. Cycle. Repeat (VSCR) and The Archaeological Way:** Plans are now in place to resurface the remainder of the Skegby Trail in Derbyshire, from Batley Lane to Pit Lane, Pleasley. The works are funded through the Highways Capital Programme (LTP) and should be completed by winter 2022. Plans have also been developed to improve the Archaeological Way through Shirebrook Town, with further LTP funding. These are subject to consultation over the autumn, with construction expected by the end of March 2023. A Town Trail will also be developed to promote access around Shirebrook. The contract to develop the VSCR App has been issued to a local firm, AT Creative, based in Higham. The contract will be completed by March 2023, when the App is launched. The project is again funded through the LTP
- **Peak Forest Tramway Trail:** Works have been identified and costed to resurface the tramway trail between Buxworth and Chinley. Scheme delivery is expected later this year
- **Local Transport Plan - A61 South:** The County Council is currently revising its Local Transport Plan which sets priorities for investment in roads and transport across the county. One of the roads being looked at is the A61 between Chesterfield and Clay Cross which is likely to become busier over the next few years as a result of several new housing and commercial developments. An online consultation which is open until 16 October, is aimed at people who use the road or live near it and explores potential options, including improved pedestrian and cycling infrastructure, which could help manage congestion, reduce emissions and make journeys easier
<https://www.derbyshire.gov.uk/council/have-your-say/consultation-search/consultation-details/a61-south---your-chance-to-shape-the-future.aspx>
- **Safer Roads Fund Projects:** Further to the road safety improvements which have been implemented on the A619 (Thirteen Bends) between Baslow and Bakewell, preliminary designs on the various solutions to improve road safety along the A5004 (Long Hill) between Buxton and Whaley Bridge and the A5012 (Via Gellia) between Cromford and Newhaven are being progressed. Cabinet approval is being sought for a

Public Engagement/ Consultation process for both projects which is planned to take place this Autumn. These will also seek comments and views regarding improvements for pedestrians, cyclists and horse riders from stakeholders and local communities

Aim 4: Improve the promotion, understanding and use of the network

- **Local Cycling and Walking Infrastructure Plan (LCWIP):** The online consultation for the draft D2N2 LCWIP shared between Derbyshire County Council, Derby City Council, Nottinghamshire County Council and Nottingham City Council is now due to commence this Autumn
- **Walk Derbyshire:** The third stakeholder event of 2022 is planned to take place online via zoom at 10am on 13 October. Again, this is free to join and open to anyone interested in playing a part in helping to increase everyday walking. It will include a talk and discussion on insight around the latest walking levels in Derbyshire, along with a presentation from Greater Manchester Walking on a case study to increase levels of walking within a community through partnership working <https://www.sasp.co.uk/events/2022/10/walk-derbyshire-stakeholder-event>
- **The Derbyshire Woodland Festival** is being held at Elvaston Castle Country Park near Derby on 17 and 18 September 2022

Aim 5: Greater community involvement

- **Volunteer contribution:** The work of volunteers on our countryside sites, paths and trails continues to be supported under a service level agreement with Groundwork Greater Nottingham. During the first quarter of 2022/23, 38.5 volunteer days were delivered with groups working on the Clowne Greenway, Pennine Bridleway, Little Eaton Branch Line and the Little Eaton Canal, as well as rights of way in South Derbyshire and the High Peak carrying out much needed maintenance and improvements. A volunteer task is due to take place in September to clear back overgrown vegetation from around the boardwalk on the White Peak Loop near Rowsley. Further sections of the route between Harrison Way and Churchtown have recently been mown by the County Council's Property Services team to help reduce the encroaching vegetation

Recommendation: That Forum Members note this progress report for delivering Derbyshire's Rights of Way Improvement Plan.

This page is intentionally left blank