



Peak District Local Access Forum

On: Wednesday 19 February 2025

At: Aldern House, Baslow Road, Bakewell

Agenda

Start: 10.00 am

| | | |
|----|---|----------------------|
| 1 | Apologies (Clare Griffin) | |
| 2 | Minutes from the last meeting 16 October 2024 (Clare Griffin) | |
| 3 | Matters Arising (Clare Griffin) | |
| 4 | Access to Water (Dan Taberner-STW) | Sue Smith |
| 5 | National Park Trails Management (Helen Carrington) | |
| 6 | Derbyshire CC RoWIP Update (Gill Millward) | Gill Millward |
| 7 | Prioritisation of DMMOs - joint subgroup report (Gill Millward) | |
| 8 | Access Update (Sue Smith) | Sue Smith |
| 9 | Access Restrictions Consultation (Sue Smith) | |
| 10 | Active Travel consultation (Sue Smith/Tim Nicholson) | |
| 11 | Members' Reports | |
| 12 | Any Other Business | |
| 13 | Chair and Key Themes for the next meeting | |
| 14 | Date of next Meeting | |

Close: 1.00 pm

Lunch: Time Not Specified

*Background papers available

| | |
|---------------|--|
| FIELD_SUMMARY | |
| | |

This page is intentionally left blank

Peak District Local Access Forum

**Minutes of the Meeting held on Wednesday 16 October 2024
at Aldern House, Baslow Road, Bakewell.**

Members Present:

Charlotte Leech
Craig Best
Ben Seal
Richard Entwistle
Alastair Harvey
Geoff Nickolds
John Towe

Charlotte Gilbert (Chair)

Martin Beer
Martin Bennett
Dave Savage
Clare Griffin
Louise Hawson
Paul Richardson

Others Present:

Gill Millward, (DCC)
Rich Pett, (PDNPA)

Sue Smith, (PDNPA)
Mike Rhodes, (PDNPA) (Secretary)

1. APOLOGIES

Apologies for absence were received from Nick Doran, Cllr Susan Hobson, Austin Knott, Jez Kenyon and Ian Ord.

39. WELCOME AND APOLOGIES (MR)

Martin Beer, Peak District National Park Authority (PDNPA) member appointed to the Local Access Forum (LAF), was welcomed to the meeting. Martin sits on Planning Committee, is a parish representative, and has a particular interest in parish issues, and assessments on the legal status of Rights of Way.

Charlotte Gilbert was thanked for Chairing today's meeting. Clare Griffin will Chair the next meeting on 19 February 2025.

Apologies are received from Nick Doran, new member Ian Ord, Austin Knott, Jez Kenyon and Cllr Susan Hobson. Charlotte Leech had advised she was running around 10 minutes late for the meeting.

Bromley Sibson, from the Trails for Good company, was welcomed as an observer of the meeting. Trails for Good aim to address issues in the trail and ultra running sector such as the impact on the environment, local communities, infrastructure and waste.

40. MINUTES FROM THE LAST MEETING ON 12 JUNE 2024 (MR)

The minutes from the last meeting on 12 June 2024 were approved as a correct record.

41. MATTERS ARISING FROM THE LAST MEETING NOT COVERED BY AGENDA (CG)

Gill Millward advised that there was a response on the way from Derbyshire County Council to the letter drafted by Martin Bennett on behalf of the LAF regarding the good work that had been carried out on signposting and waymarking of rights of way by DCC.

42. HEALTH AND WELL-BEING PRESENTATION (CG)

Clare Griffin made a health and well-being presentation to the Local Access Forum (LAF). Clare is a general outdoor enthusiast and is a member of several related interest groups. Through her role working for the NHS at The Christie Hospital, Clare has become increasingly aware of the benefits of patients accessing blue and green space, including encouraging physical activity, and overall improvements to mental health and well-being. Clare shared some useful resources and research with LAF members, particularly supporting the link between better outcomes for cancer patients and accessing nature. The presentation also included information about barriers to accessing nature, and the negative impact this has on the public's health.

Charlotte Leech joined the meeting at 10:10 am.

Summary of Discussion

The benefits to mental and physical health of access to nature is backed up by scientific research. Everyone is affected by health issues either personally or through someone they know. The LAF have a role in access for all to nature and more access in the long term can be shown to reduce costs in the health care system. The role of government is key.

Locally, the Miles without Stiles project is a good resource. Improving access enables people to easily get out and benefit from nature. The network for linking people to sites in green spaces could be improved. There are various ways access to nature can be communicated, and wider green prescribing would be good. Patients often get given information about accessing health care and treatment, and access to nature advice could be part of that.

The National Trust is preparing a business case to DEFRA for a landscape recovery project in the High Peak. Improved health and wellbeing benefits the rural economy and is a cost saving overall.

There are inequalities in access to nature. In areas of deprivation the infrastructure is poor and access routes in urban areas are poorly maintained and impacted by litter.

Rachael Lyon, Young People & Communities Team Leader, from the Peak District National Park Authority's (PDNPA) Engagement Team, was present to update the LAF on the work of her team. They are a small team, making links with professionals and other organisations. Communication is a key element to reaching out to a diverse audience with different needs. The team support link workers and organisations, especially in relation to those with mental health conditions. This is done through information sharing and sign posting to resources and other organisations. The team works with the Royal Society for the Protection of Birds (RSPB) on Nature Prescriptions. Other National Parks are carrying out similar work with people in their own space. The Peaks of Health project operates in the south of the PDNP, an area where it has previously been difficult to connect with people. The team is also working with the PDNPA's cycle hire team to promote the accessible equipment that is available. They are creating a health and wellbeing network to connect organisations and bring in resources to complement and communicate the work. A health and wellbeing network has been established. The LAF was interested to hear about this work and offered to help the team where possible.

As part of Gill Millward's RoWIP Update for June's LAF meeting, it was mentioned that an interactive map has been developed to promote emotional health and wellbeing across Derby and Derbyshire to help connect people with local outdoor activity groups and opportunities to stay active and connect with nature which includes parks, trails, places of beauty, outdoor gyms, community gardens and

more. The link to the webpage which was launched in May 2024 to coincide with Mental Health Awareness Week is here:

<https://bit.ly/Movemorenature> along with a link to the map itself:

<https://bit.ly/MHPAMap>

Action: It was suggested that someone leading on this work could be invited to a future Forum meeting to provide and update.

43. ACTIVE TRAVEL UPDATE AND TERMS OF REFERENCE FOR SUB-GROUP (SS)

Sue Smith gave an Active Travel update. Work has focused on consultations and obtaining data over the last few months. Two workshops have taken place with constituent and neighbouring Highway Authorities and a workshop has also taken place with major land owners. The first Local Access Forum stakeholder meeting is taking place after today's LAF meeting.

Summary of discussion

The guidance from the LAF at the workshops was valued. Charlotte Gilbert reported that the Active Travel England panel had been impressed with the work that the Peak District National Park had undertaken. The LAF will monitor the development of active travel programmes and consider reports brought to the Forum in order to progress the equivalent of the National Park's Local Cycling and Infrastructure Plan by March 2025.

Action: The report was noted, and the terms of reference for the sub-group were approved.

44. DERBYSHIRE RIGHTS OF WAY IMPROVEMENT PLAN UPDATE INCLUDING REPORT ON UNRECORDED WAYS SUB-GROUP MEETING (GM)

Gill Millward, Countryside Access Improvement Officer with Derbyshire County Council gave an update on Derbyshire's Rights of Way Improvement Plan (RoWIP).

Aim1: Existing Rights of Way Network

The report details the revised list of rights of way schemes to be delivered in the LAF's area in 2024/25, with other works deferred to future years due to a need to target funds for carriageway pothole repairs. £120k was available in 2024/25 for the replacement of 400 missing or damaged roadside signposts on public rights of way across the county, with 2,000 waymark discs already purchased to improve waymarking along those routes reported to be difficult to follow.

Summary of Discussion

There is a contrast between the amount of funding spent on rights of way compared with carriageways. Trying to improve access to the countryside is difficult when money is diverted into roads, meaning important work isn't done elsewhere on the network. DCC do a lot with limited resources. Long term funding around projects such as the Active Travel Masterplans and Pennine Bridleway National Trail will support work on the rights of way network. Surfacing is expensive. It is unclear, at the moment, what further funding might be available from the recent formation of the East Midlands Combined County Authority.

Aim 2: Definitive Map and Statement

The work to deal with the backlog of Definitive Map Modification Order (DMMO) applications continues. Volunteers working on Project 2026 Derbyshire have now created research records for 404 paths and submitted 221 DMMO applications. Progress is slow because of the volume of DMMO's being submitted, and the amount of work involved in processing them. A Joint LAF Unrecorded Ways Sub-Group has met to discuss how the process could

be made easier and how to prioritise the applications.

Aim 3: An Improved Network

- a) The LAF was updated on progress to deliver various sections of the Pennine Bridleway National Trail, White Peak Loop and the Derwent Valley Trail as part of Derbyshire's Key Cycle Network, catering for walking, wheeling, cycling and horse riding wherever possible.

Summary of Discussion

The Derwent Valley Trail will run from Shardlow in South Derbyshire, through Chatsworth, and on to Hathersage, following the course of the River Derwent. The vision is that this will create a route that can be used by walkers, cyclists, horse riders and canoeists.

- b) Consultations for the Active Travel Masterplans (ATMs) being developed for the market towns of Belper, Glossop and Ilkeston have been completed, with a positive response overall. The Hope Valley ATM project, which is an area wide plan, is now underway.

Summary of Discussion

The Hope Valley has a population of 9,000 with 7 million car visits per year. The links between towns, villages and communities is important as highlighted by the recent long term road closure at Bradwell. Charlotte Gilbert and Martin Bennett attended an on-line stakeholder engagement event for the Hope Valley ATM in September. The Plan will enhance the opportunities for cyclists, but the bridleway network is fragmented. Local parishes have attended an in-person event, and it is expected that there will be a wider public consultation in November, which will fall between the two Local Access Forum meetings.

Action: A joint response from the LAF on the Hope Valley Active Travel Plan to be submitted as part of the public consultation.

Derbyshire County Council (DCC) is working with The Young Foundation and University of Derby to develop Derbyshire's Local Nature Recovery Strategy (LNRS). This involves bringing together diverse perspectives from across Derbyshire and Derby. A series of stakeholder engagement events and workshops have taken place, with public consultation on the draft strategy planned for early 2025, with the aim of publishing the document by Summer 2025.

Aim 4: Improve the promotion, understanding and use of the network

- a) There are events taking place during 2024/25 to promote the Countryside Code, along with a series guides about responsible use of the countryside.
- b) The Walk Derbyshire App was launched on 1 July 2024, followed by several autumn events and free guided walks.
- c) Each year 13,000 copies of the Cycle Derbyshire leaflet/map are distributed to various venues across Derbyshire, as well as being available on the County Council's website.

Aim 5: Greater community involvement

The Service Level Agreement with Groundwork Five Counties is continuing in 2024/25. Dedicated groups of volunteers have worked on the rights of way and trails network, with 154 volunteer days delivered in the first six months of the year, estimated to be worth around £30,723.

Action: The progress report for delivering Derbyshire's Rights of Way Improvement

Plan was noted

45. ACCESS UPDATE - UPDATE ON ACCESS FOR ALL AND ANNIVERSARY GATES (SS)

Sue Smith gave an update on Access projects in the Peak District National Park.

The Miller's Dale Changing Place on the Monsal Trail opened on 19 September 2024. A further Changing Place is due to be installed at Parsley Hay on the High Peak Trail.

70 Anniversary Gates providing access to the wilder parts of the National Park have been installed, funded by donations to the Access Fund. Wider gates and information panels to improve accessibility are being funded by the Farming in Protected Landscapes (FiPL) programme at the Authority's minor properties at Green Lane Pits, Hard Rake, Taddington Dale and Dirlow Rake.

Summary of Discussion

The MP for the High Peak has said that the Changing Place at Miller's Dale will change lives through enabling access. The facility is well designed and has been funded from various sources. The improvements to access at Dirlow Rake are appreciated. FiPL has funded footbridges at the River Wye near Topley Pike and at Cressbrook, along with a boardwalk, steps and railings in Warslow.

Action: The report was noted

46. ACCESS UPDATE APPENDIX - PROJECTS

The appendix to the Access Project update shows pictures of the work carried out and the people involved.

47. REVIEW OF DIRECTIONS - CONSULTATION AT HOLLINS HILL (SS)

Sue Smith set out the report to update the Forum on the consultations for the review of open access land exclusions.

The first three reviews have been completed, with the variation made as proposed on the direction at West Nab. The consultation at Hollins Hill relates to an exclusion of dogs whilst cattle are calving. Further discussions with the landowner have taken place to assess if this is still appropriate, with a conditional requirement to retain the permissive path.

Summary of discussion

The works at Swan and Limer Rakes are completed, with the route now open and a Traffic Regulation Order in place to prohibit vehicular access. There is no access to the south of Hollins Farm. The direction at Hollins Hill has provided a link route to the access land. Gates have been upgraded as the route is well used.

Action: The Peak District LAF approved the consultation response set out in Appendix 1 – Review of Statutory Direction Restricting Access at West Nab.

Action: The Peak District LAF agreed to make a response to the consultation set out in Appendix 2 – Review of Statutory Direction at Hollins Hill.

48. MEMBERS REPORTS

- a) Charlotte Gilbert - Update on the Trails Management Plan – Structure survey work is underway on the tunnels and bridges. A schedule of inspections, including vegetation clearing, is planned. The annual risk assessments for the walls above the cuttings have been completed. The capacity in some of the car parks that serve the trails has been increased, and charges introduced in others. The Management Plan is proceeding to keep the trails open to all users.

Action: The LAF to invite Helen Carrington, PDNPA Property Manager, to make a presentation at the next meeting about the management of the National Park's trails and properties.

- b) Ben Seal - Access to the Outdoors -The new government has pledged to create 3 new forests and 9 new national river walks, but there are no details about delivery of those. The Outdoors For All network, which is made up of 51 different organisations has signed up to a manifesto calling on the government to expand the right to access the outdoors. Although there have been no further announcements, there is optimism to see what emerges. There is still a commitment to 15 minutes to nature, with the Environmental Improvement plan to make better, quicker progress, which DEFRA is currently reviewing.

The quality of the place being visited is as important as the access to it. Water quality is an issue that needs tackling. The LAF should be ready to comment on any consultations on future legislation and introduce the Forum to local MPs and new mayors, who have a remit for transport. Possibly a LAF sub group could be formed to look at government policy changes and feedback details of relevant Green Papers, and to establish the LAF priorities in order to respond. The issue of Right to Roam has been raised again with the recent case in Dartmoor National Park. There should be safeguards on any restrictions on Access Land.

Action: Ben Seal was asked to put a report together for the next LAF meeting and to introduce the recently elected area MPs to the work of the LAF.

- c) Derbyshire on-line mapping and reporting system for Rights of Way- Martin Bennett demonstrated Derbyshire's on-line mapping for public rights of way. The formal definitive map is still a paper record kept in the County Council's Archive department. The on-line map is a version of the definitive map for the public to refer to, showing boundary details, scheduled work locations, as well as the rights of way network.

Reporting issues via the on-line system is a large part of Martin's work as Footpath Secretary for the Ramblers Derbyshire Dales Group. Each Council has their own reporting system, with the Fix My Street App, being widely used for reporting problems.

Summary of Discussion

There are approximately twenty steps to reporting a rights of way issue with the Derbyshire County Council on-line system. This takes the user through many screens, and various maps, some of which aren't very user friendly. Once a report is submitted, the acknowledgement email does not include a summary of the report, which can be problematic when reporting multiple issues. Other

authorities use the Fix My Street (FMS) App, which is easier to use. DCC has previously used this App, but has now stopped using it. If Fix My Street is used to report an issue within Derbyshire but the DCC system isn't integrated with the App, those reports might not be picked up.

In other areas reporting is easier, and definitive maps are more comprehensive with recording of connective routes in urban areas. Systems which are more difficult to navigate could lead to fewer reports to some councils. Reporting needs to be encouraged in order to collect data, which indicates where extra resources are needed. It also helps authorities prioritise their work. The demonstration has highlighted the issues with reporting problems on the rights of way network with some local authorities, although out of the 250 reports submitted by the Ramblers Association to DCC at year end, most reports have been dealt with. This is not the case everywhere in the country.

Action: Martin Bennett to draft a letter to Derbyshire County Council on behalf of the LAF regarding the difficulties using its online reporting system for problems on the Rights of Way network.

49. ANY OTHER BUSINESS

Mike Rhodes gave an update on the work of the Peak District National Park Foundation, as prepared by Jenny Seaman, Fundraising Manager at the Foundation.

Access donations are now to be via the Foundation's Paths and Trails Appeal. A dedicated webpage for the appeal was set up on the Foundation website in September 2024, with £5,333 already raised. This includes a £2,000 corporate donation from HolidayCottages.com, and a £2,000 memorial donation. Following a positive conversation with the British Mountaineering Council's Access and Conservation Trust, the Foundation has submitted an application seeking £5k from the Trust. Over the next month National Park Visitor Centres will promote the appeal, introducing a point of sale donation from their customers. The Foundation will promote the appeal via social media inviting donations from corporate partners, event organisers and individuals. Meetings will be held quarterly with the Access and Trails Team to decide how the money can be most usefully spent.

50. DATE OF NEXT MEETING (MR)

The date of the 2025 meetings are Wednesday 19th February, Wednesday 11th June and Wednesday 15th October.

51. CHAIR FOR NEXT MEETING

Clare Griffin will be the Chair for the period up to and including the next meeting on 19th February 2025 and has been involved in the planning of the current meeting. Martin Bennett and Charlotte Gilbert will continue as Vice Chairs. It is hoped that at some point someone on the Forum will take up the position of Chair on a longer term basis.

There was no interest expressed at this point from the LAF members to be Chair for the June and October 2025 meetings.

Action: Aim to publish the minutes earlier than previous in order that matters get actioned.

Decision: To continue with an agenda item to determine which LAF member will act as Chair on a meeting-by-meeting basis.

52. THEME OF NEXT MEETING

The theme of the next meeting is the management of public access.

Helen Carrington, PDNPA Property Manager, will be asked to make a presentation at the next meeting. Also, Dan Tavener, from Severn Trent Water, will make a presentation about access to water at Ladybower and wild swimming at Carsington Water.

Sue Smith introduced Forum members to Fiona Groves, who will be leading this afternoon's stakeholder workshop. Over lunch LAF members will also be joined by representatives from the British Mountaineering Council, British Horse Society, Disabled Ramblers and the National Trust, who will all be contributing to the workshop.

Meeting ended - Time Not Specified

e:\moderngov\data\agendadocs\2\0\9\00004902\\$\$minutes.doc

**__NU
MBER
_SUB
_1.**

ACCESS TO WATER



Page 11

Dan Taberner

Visitor Experience Lead



WONDERFUL ON TAP

Agenda Item 4

AGENDA

1. Background to water access on ST reservoirs
2. Why we want to increase managed water based activities
3. Managed Open Water Swimming
- 4 Introduction of Paddlesports to Ladybower
5. Q&A

BACKGROUND

- ✓ Severn Trent owns **43** raw water storage reservoirs **19** of these allow some kind of water based recreation.
- ✓ The majority of these being sailing clubs and fisheries with some commercially operated watersports centres.
- ✓ None of these operators are managed directly by Severn Trent and are managed through a licence or a lease.
- ✓ Need to balance water operations with recreation. Our sites have added dangerous due to operational assets, underwater features and flooded landscapes.
- ✓ All our water based activities are actively managed and we do not allow 'free access' due to the added dangerous of operational assets, underwater features and flooded landscapes.
- ✓ Activity operating standards our tenant partners have to sign up to.



WHY DO WE WANT TO INCREASE ‘MANAGED ACCESS TO WATER’

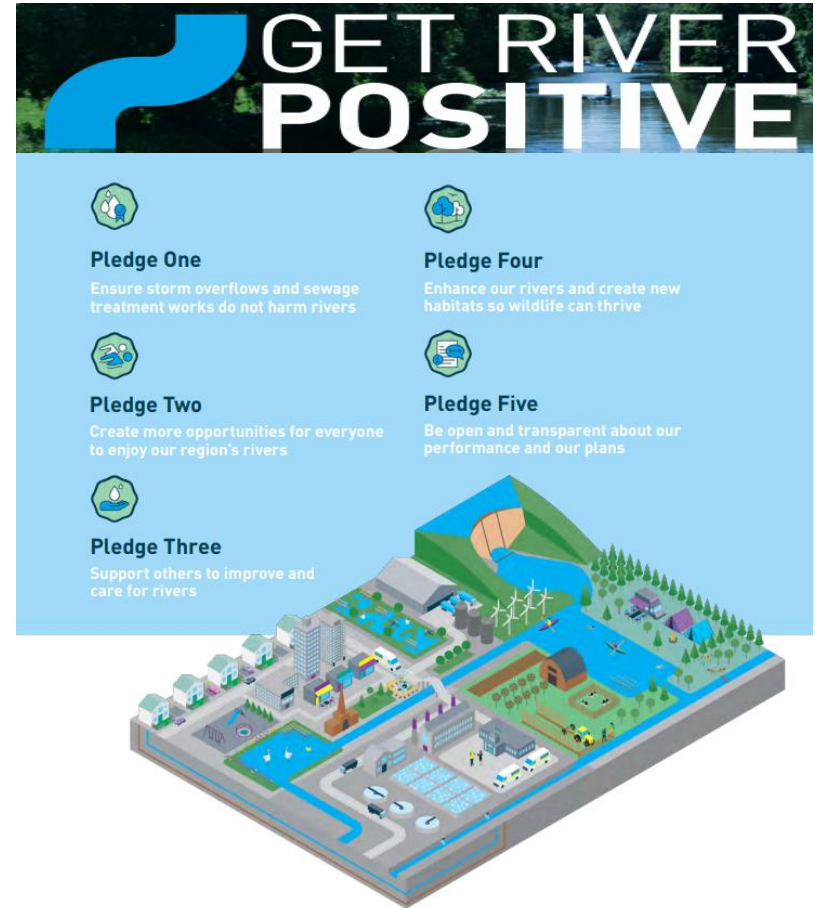
- ✓ Severn Trent's ‘Get River Positive’ commitment.

Part of pledge 2 is that *“We will work with local clubs to increase opportunities for water-based activities at our reservoir sites”*

- ✓ Water based activities are increasingly becoming more popular in the UK due to a rise in activities such as Paddleboarding and open water swimming. Severn Trent recognises the benefits and opportunities that authorised access to water can offer through enabling activities such as open water swimming to take place on its reservoirs.

- ✓ Open water swimming is one of the fastest growing water sports in the country largely driven by the inclusion of both the triathlon and marathon swim in the Olympic programme. The subsequent media coverage has helped to raise the level of interest and awareness fuelling a demand for opportunities to train and compete.

- ✓ New user groups and adds to our existing offer.



MANAGED OPEN WATER SWIMMING

We have historically had a no swimming rule across all of our visitor sites. Swimming has very different risks than other water based activities and in the past it was thought to be too challenging to mitigate these risks. There is a move towards allowing managed swimming across the wider water industry and more is known about how to manage this safely.

Our ambition was to trial an event in 2024 with the hope we can start to grow this opportunity in a safe way.

The process we went through.....

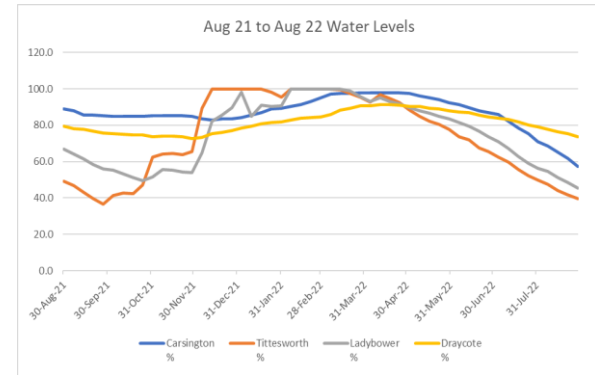
Step 1 - The Visitor Experience Team collaborated with internal departments to gain an understanding of the risks and opportunities to the business. H&S, Water Quality, Operations, Property, Legal, Insurance and External Communications were all involved.

Step 2 – Review which sites were most suitable to host open water swimming.

- ✓ Visitor site infrastructure
- ✓ Water quality (EU bathing water standards)
- ✓ Water levels
- ✓ Operational assets
- ✓ Current visitor offer

Carsington was chosen as our test venue for 2024

| Site | Staffed? | Number of car park spaces | Overflow parking available? | Other onsite activities |
|--|----------|---|-----------------------------|---|
| Carsington | Yes | 800+ across the full site | Yes | Sailing club and watersports centre onsite. Watersports centre onsite but located on opposite side of reservoir to parking, so very limited parking available. |
| Tittesworth | Yes | c.200 | Yes | |
| Draycote | Yes | 400 (expansion due in September which will give another 400 spaces) | Yes | Sailing club and fishery. |
| UDV (Ladybower, Derwent and Howden) | Yes | 180- Fairholmes, 80- Heatherdine, plus smaller car parks next to Derwent Lane | No | Fishery, due to start offering paddleboarding this summer on Ladybower. Visitor facilities located at Fairholmes between Ladybower and Derwent but no easy access to water. |
| Lake Vyrnwy (HD) | Yes | 60 at main car park, an additional 30 at Rhiwargor | No | Watersports centre with limited parking |
| Linacre | No | c.45 | No | No activities. |
| Shushtoke Water | No | c.40 | No | Fishery and sailing- members only clubs. |
| Thornton Water | No | c.30 | No | Fishery |
| Trimpley Water | No | No main car park, very limited on road parking | No | Sailing club and fishery. |
| Clywedog (HD) | No | No main car park, very limited on road parking | No | Sailing club and fishery. |
| Key | | | | |
| Easy to manage either events or regular swims | | | | |
| Could be managed but may need some investment to enable easy access or parking | | | | |
| Significant investment needed to allow swimming | | | | |



| EC BATHING WATER DIRECTIVE 2006/7/EC | | | | |
|--------------------------------------|-----------|--------|------------|-------------|
| RATING | EXCELLENT | GOOD | SUFFICIENT | POOR (FAIL) |
| Escherichia Coli (cfu/100ml) | <500 | <1 000 | <900 | >900 |
| Intestinal Enterococci (cfu/100ml) | <200 | <400 | <330 | >330 |

MANAGED OPEN WATER SWIMMING

Step 3 - Creation of policy on how we would manage 'Managed Open Water Swimming' on our sites. Creating a best practice document.



Step 4 – Tendered the opportunity to work with one event partner with a good proven track record to deliver open water swimming events.



Step 5 – Onsite communications plan

- Key message is still 'No Swimming' in line with all other water companies.
- Swimming is only allowed as part of an organised event where safety can be managed.



STEP 6: TRIAL EVENT

- On July 11th 2024, the trial event took place at Carsington.
- Swim only event. Participants had 2 hours to complete the mile loop.
- Well attended with just over 300 participants.
- Safety cover provided through a number of safety kayaks, paddleboards and safety boats.
- Swimmers adhered to wetsuit and swim float policy
- Received great feedback from participants.



SWIMMER FEEDBACK

100% felt the event was well managed

100% felt safe

100% enjoyment rate

An amazingly well run event – everyone answered all my questions which was a massive reassurance

The weather and choppy water were out of your control but an enjoyable event

“Well organised and friendly event, would definitely do this again!”

“I’ve done quite a few events but this one felt special – total elation in car on the way home!”

“The safety team were absolutely brilliant and super vigilant especially around anyone struggling”

SWIMMING NEXT STEPS

The next steps for us on managed swimming are:

- ✓ Continue to work with Pacesetter as a partner to deliver the managed swimming events under their license arrangements.
- ✓ Plan to complete a maximum of 4 managed mass participation swimming events during Summer 2025 at Carsington
 - We will consider morning events as well as evenings and review the feasibility of this.
 - Our first triathlon
- ✓ Implement regular weekly managed swim sessions at Carsington with our existing tenant. To become a 'Beyond Swim' accredited venue.
- ✓ Continue with our strong "No unauthorised swimming" at all others.
- ✓ We will also look at the feasibility of Tittesworth Water and possibly the Upper Derwent Valley as the next option for hosting a managed swimming event. The key success criteria to this will be understanding the water quality and testing process and results.

LADYBOWER PADDLESPORTS

Background

- Due to the growing demand for paddlesports we were keen to look at ways we could introduce paddlesports safety to the Upper Derwent Valley
- In October 2023 we worked with Ladybower Fisheries to launch Ladybower paddlesports.

Page 19

Agreed locations, safety provisions in the form of an activity standards and licence.

Accesses

- Over around 1600 paddlers in first year
- Became an affiliated club through Paddle UK and Paddle UK delivery partner
- At the beginning of November 2024 they installed a new pontoon with kayak launch, which helps able bodied and disability customers to safely enter the water.
- High Peak Borough Council Rural Business Grant funded 12 Sit on top kayaks and 2 Trident 12v electric kayaks

Challenges

- Limited ability to grow due to lack of parking facilities and changing areas.
- Investment needed to expand Heatherdene car park and develop a building to house changing facility, storage, classroom
- Managing anti-social and unauthorised access to water.
- Running costs to manage safety on a reservoir.



Picture taken by Ladybower Paddlesports

ANY QUESTIONS

WONDERFUL ON TAP



Peak District Local Access Forum

Date: Wednesday 19 February 2025

Item: 6

Title: Derbyshire's Rights of Way Improvement Plan (RoWIP) - Update

Author: Gill Millward, Countryside Access Improvement Officer, Sustainable Travel Team, Derbyshire County Council

Purpose of Report

To present Forum members with an update on progress towards the delivery of Derbyshire's Rights of Way Improvement Plan.

Aim 1: Existing Rights of Way Network

- **Surface condition, drainage and roadside signposts/ waymarking:** Following the completion of surfacing works on Monyash BOAT 29 (Derby Lane) back in August, the revised list of rights of way schemes to be delivered in the Peak District LAF area for the remainder of 2024/25 includes:
 - Eyam BOAT 31 drainage and surfacing. Kerbing and drainage work now finished at the top of the path on High Cliffe.
 - Chinley FP 44 drainage and surfacing. Design issued and awaiting start date.
 - New Mills BW 54 drainage and surfacing. Design issued and awaiting start date.
 - Edale BW 19 (Jacobs Ladder/ Pennine Way) stone pitching. Pre-start survey undertaken, with work due to commence imminently (scope is very similar to previous site visit with LAF members).
 - Roadside signposts have been installed/ replaced at 87 locations, with a further 192 locations issued and awaiting a start date.
 - Using the 2,000 discs already purchased, waymarking is currently underway on routes reported to be difficult to follow.

Other schemes, including Bamford Clough, Chinley FP 1 and Birchover BOAT 23/ South Darley 46 (Clough Lane) have been deferred to future years due to a need to target funds for carriageway pothole repairs. On 14 November 2024, Cabinet approved an indicative scheme list for 2025/26 which provides funding, totalling £315,052, for emergency schemes to promote the safe use of the rights of way network and continued investment in roadside signposts.

Aim 2: Definitive Map and Statement

- In terms of dealing with the backlog of **Definitive Map Modification Order (DMMO) applications**, details of progress made between 1 October 2024 and 31 January 2025 is set out in the table below:

| Legal Order Stage | October 2024 | November 2024 | December 2024 | January 2025 |
|--|--|--|---|---|
| New DMMO applications received (6) | 04830 = Add FP from FP49 along Eades Fold, Castleton. | 04833 = Amend alignment of FP4, Elmtton with Creswell. 04834 = Add FP from FP49 to Hallmoor Road, Darley Dale. | 04842 = Add FPs from adopted highway at Nags Head to FP25 and from adopted highway to meet claimed route, Edale. | 04843 = Add RB from Parwich Lane along Green Lane to Cardlemere Lane, Hartington Nether Quarter. 04841 = Add FP from Farley Hill to Greenaway Lane, Darley Dale. |
| Informal consultation started (0) | 0 | 0 | 0 | 0 |
| Decision made by DCC (2) | 0 | 04630 = Vary the particulars of FP40, Osleston & Thurvaston. Application approved. 04718 = Add FP from FP44 to Riber Road, Matlock. Application approved. | 0 | 0 |
| Orders made (2) | 0 | 0 | 04269 = Upgrading FPs 26 (part), 33 (part) and 34 to BW, Doveridge. | 04837 = BOAT between Garner House and Highlow Hall, Offerton and Highlow. |
| Cases passed to PINS (1) | 04526 = Add RB from Ridge Top Lane to FP4, Hayfield. | 0 | 0 | 0 |
| Decisions received from PINS (2) | 0 | 04072 = Add FP from FP108 to FP107, Belper. Order confirmed | 0 | 04265 = Upgrade FP8 to BW, Abney & Abney Grange. Appeal against DCC decision dismissed. |
| Orders confirmed (1) | 0 | 04072 = Add FP from FP108 to FP107, Belper. | 0 | 0 |
| <p>FP = Footpath BW = Bridleway RB = Restricted Byway BOAT = Byway Open to All Traffic</p> <p>NB: Those in the Peak District LAF area are shaded in grey.</p> | | | | |

- Further information about each of the applications in the table above, including decisions made by DCC and the Planning Inspectorate (PINS) can be found through the County Council's on-line register.
- **Project 2026 Derbyshire:** Volunteers are continuing to investigate historic, unrecorded routes across Derbyshire with research records now created for 408 paths and 223 DMMO applications submitted to the County Council to date. Having discussed how these might be prioritised in the light of an increasing backlog and limited staffing resources to process them, the Joint LAF Unrecorded Ways Sub-Group has produced a set of recommendations. This was approved by DADLAF members when they met on 6 December 2024 and is being reported to this Forum for consideration under Item 7 to agree the advice which will be conveyed to the County Council.

Aim 3: An improved network

- **Pennine Bridleway National Trail:**

- On the Derbyshire section of the Pennine Bridleway, general maintenance has focused predominantly on essential drainage work and winter vegetation clearance, with the continued help of Groundwork volunteers working at various locations, including Roych Clough, Hayfield and Matley Moor. The replacement of non-slip surfaces is being progressed for



several road crossings, starting with the A5012 (Via Gellia Road) near Pikehall which was completed last Autumn with funding from the Safer Roads Fund. Two others, on the A6 at Blackwell in the Peak and the A515 at Pomeroy, will be rolled out in the next few months with funding provided through the County Council's Highways Capital Programme. Again, these will be treated with a buff-coloured stone to increase visibility/ awareness of the crossing for motorists and provide an anti-slip surface for trail users.

- On the development side, work is continuing on two of the three missing sections of the National Trail around Glossop, with landowner discussions underway for a feasible alternative route into Gamesley which avoids Dinting Viaduct. The engineers assigned to the River Etherow section between New Road at Tintwistle and Woolley Bridge Road in Hadfield are making good progress with preparatory work and initial designs for this 1.7km

section which will include a multi-user bridge and road crossings at either end. Contact is being made with the various landowners along the route and traffic counts are due to take place in March.

- Grant funding bids are being prepared for submission to Natural England/ Pennine National Trails Partnership to support on-going maintenance and further development work on the Pennine Bridleway in 2025/26 with match funding provided by the County Council.

- **White Peak Loop:** 62km or 71% of the White Peak Loop (WPL) is currently complete. Design and preparatory work is continuing for the missing section of the WPL from the end of the Monsal Trail at Topley Pike through Buxton to the Parks Inn at Harpur Hill with funding from Active Travel England and the County Council's Highways Capital Programme. In the meantime, a 'bronze' standard, interim route should be signed and in place by the end of March 2025. This will avoid Buxton for the time being and use part of the Pennine Bridleway to connect the Monsal and High Peak Trails to complete a circuit route of around 54 miles (86km) around the Derbyshire Peak District. Although there are some on-road sections between Cromford and Matlock, as well as through Rowsley, the interim route will provide a predominantly traffic-free walking, wheeling and cycling trail which will accommodate horse riding wherever possible.
- Other work includes the resurfacing of a previously muddy 655m



section of the proposed WPL and connecting footpath which run across Temple Fields between Fern Road and Green Lane in Buxton. The paths which have also been made more accessible for shared use are part of a popular active travel route to and from local junior and secondary schools.

- Work is underway to improve the public rights of way and parts of Coombs Road between Rowsley and the Monsal Trail near Bakewell, following on from the resurfacing of Rowsley Bridleway 2 which was completed in Spring 2021. The aim of the latest repairs is also to provide a better surface with improved drainage and accessibility, enabling users to enjoy the route throughout the year. A temporary closure is in place for the duration of the work which is expected to be completed at the end of February/beginning of March. Any closures should be restricted to weekdays, with public access being available at the weekend.

More information about the WPL can be found here:

<https://www.derbyshire.gov.uk/leisure/countryside/access/white-peak-loop/white-peak-loop.aspx>

- **Investment:** On 14 November 2024, Cabinet approved an indicative scheme list for 2025/26, based on the anticipated funding allocation from the Department for Transport. This identifies £883,124 for multi-user Greenway/ Derbyshire Cycle Network development and maintenance, including work with volunteers and surface improvements on the White Peak Loop, Pennine Bridleway, Nutbrook, Blackwell and Silverhill Trails. These schemes will be delivered by officers from the Countryside Service and Sustainable Travel team. Funding totalling £910k has also been identified for school and business travel plans, wheels to work and upgrades to bus stop infrastructure:

<https://democracy.derbyshire.gov.uk/ieListDocuments.aspx?CId=135&MId=1540&Ver=4>

- **Active Travel Masterplans (ATMs):** All three draft ATMs for the market towns of Belper, Glossop and Ilkeston have now been completed, having been developed

through engagement with stakeholders and local communities. They have also been informed by a formal public consultation exercise which took place between 29 April and 24 June 2024. On 9 January 2025, Cabinet approved



the use of the additional £0.427m grant funding from Active Travel England to develop several of the ATM recommendations relating to the more strategic routes/ interventions which will be subject to further public engagement. For Glossop this includes technical feasibility work/ option selection for a route between the town centre, Dinting, Hadfield and Hollingworth with links to schools, as well as design preparation for the River Etherow and Dinting Vale sections of the Pennine Bridleway:

<https://democracy.derbyshire.gov.uk/ieListDocuments.aspx?CId=135&MId=1555&Ver=4>

- **Hope Valley Active Travel Masterplan:** DCC's consultant is continuing to develop a rural/ visitor economy-based ATM for the Hope Valley based on the results of the stakeholder engagement which took place last September. Wider public engagement is planned for May 2025, with a draft ATM expected by the Summer.

- **Preparing a Local Nature Recovery Strategy (LNRS) for**

Derbyshire: The results of two online surveys have recently been



published, with the findings being used to help produce the draft strategy which is due out for consultation in February/ March 2025. Over 1,000 people completed the public survey which revealed a high level of interest in nature recovery. The top 5 scoring priorities for nature recovery in Derbyshire

over the next 5 years are:

- Healthier rivers, lakes, streams, springs and wells
- Protection of endangered species
- Improved condition of habitats
- More trees and woodland
- More hedgerows

The second online survey specifically aimed at farmers, landowners and land managers attracted 134 responses. As well as being used to inform the content of the strategy, they will also help identify ways to continue to engage effectively with this sector on nature recovery and wider environmental sustainability matters. The key findings from both surveys, along with further updates for the LNRS can be found here:

<https://derbyshirenaturerecovery.co.uk/updates/>

Aim 4: Improve the promotion, understanding and use of the network

- **Walk Derbyshire:** Statistics in the Joint Local Health and Wellbeing Strategy 2024 – 2027, which was approved by Cabinet on 17 October 2024, reveal that 30% of Derbyshire’s adult population are not physically active and that the percentage of adults walking for travel at



least three days per week is worse than the England average. Walk Derbyshire’s aim is to make every day walking the norm. It works in partnership with many organisations to help make walking as accessible as possible and overcome the barriers which deter people. Steering group meetings are held every other month, involving representatives from across the county, including DCC Sustainable Travel, Public Health, Active Derbyshire., Derbyshire Carers Association, Sustrans and elected members. The meetings are also attended by walk co-ordinators from each of the boroughs/ districts, including the Peak District National Park. There is information on the website about the network of walking groups, with a programme of led walks and an expanding selection of self-guided walks where everyone is encouraged

to add their favourite route for others to enjoy. The first newsletter of 2025 is due out on 14 February: <https://walkderbyshire.org.uk/>

Aim 5: Greater community involvement

- **Volunteer contribution:** The Service Level Agreement (SLA) with Groundwork Five Counties is continuing in 2024/25. There were just over 254 volunteer days delivered between 1 April and 31 December, estimated to be worth around £50,711, with 6 new volunteers recruited during this period. Dedicated groups of volunteers have worked on rights of way in South Derbyshire, as well as on the Pennine Bridleway National Trail, White Peak Loop (pictured below), Archaeological Way, Clowne Greenway and connecting paths, carrying out much needed tasks which include cutting back encroaching vegetation, creating wildlife habitat, litter picking and essential drainage work.



Before



After

Recommendation: That Forum Members note this progress report for delivering Derbyshire's Rights of Way Improvement Plan.

This page is intentionally left blank

Peak District Local Access Forum

Date: Wednesday 19 February 2025

Item: 7

Title: Prioritisation of Definitive Map Modification Order (DMMO) Applications

Author: Gill Millward, Countryside Access Improvement Officer, Sustainable Travel Team, Derbyshire County Council

Purpose of Report

To agree the advice which Derbyshire's Local Access Forums will provide to Derbyshire County Council with regard to the prioritisation of DMMO applications received by the Authority in respect of unrecorded rights of way based on historic (pre-1949) evidence.

Background

This has been a subject of discussion for some time since the Joint LAF Sub-Group for Public Rights of Way, Open Access and Unrecorded Ways met back in January 2017 to discuss the growing concern amongst Forum members about the loss of historic rights of way not registered before the 1st January 2026 cut-off date introduced by the Countryside and Rights of Way Act 2000 (which has since been extended to 2031).

The Joint LAF Sub-Group includes five members from DADLAF and three from the Peak District LAF. It has also, from time-to-time, invited others with a relevant expertise to participate in Sub-Group meetings in order to widen the discussion. Its aim is to explore what the LAFs can do to facilitate the registration of these Unrecorded Ways. It was recognised that whilst the LAFs may not have the expertise or resources to take an active role in researching and claiming these routes, they could help in raising public awareness and facilitating/ guiding the work of others, bringing interested parties together and encouraging collaborative working, as well as identifying where assistance is needed, how it might be provided and managing people's expectations.

Several successful training events and visits to the Record Office in Matlock were organised for volunteers interested in carrying out the research and preparing/ submitting DMMO applications.

More recently the Sub-Group has concentrated on a number of issues, including the length of time it takes to process DMMO applications and how this might be made easier. Having reached the conclusion that there was little

that could be done to alter the processes and procedures which are governed by legislation and statutory regulations, the Sub-Group has concentrated on how they might be prioritised in the light of an ever-increasing backlog. It is understood that this now exceeds 300 outstanding applications and that the staffing resources available to deal with them has now been reduced to only one full time member of staff.

Having discussed this with several experts in the field and looked at various statement of priorities, criteria and matrices adopted by other Authorities, the Sub-Group generally felt there was a need to prioritise the most useful applications, rather than dealing with them in strict chronological order. This is the County Council's current policy/ practice which it sees as being the most equitable.

At the Joint Sub-Group meeting held on 12 August 2024 to look specifically at the prioritisation of DMMOs for Unrecorded Ways submissions, suggestions ranged from reviewing the detailed points scoring system proposed by the County Council back in 2005, but which was never implemented, through to not even trying as no system would meet the needs of all interested parties.

However, a general consensus emerged that what was required was to propose a more strategic approach to the County Council. It was agreed that following the meeting, Sub-Group members would provide any further thoughts so a set of recommendations could be produced for both LAFs to consider at their meetings to be held on 6 December 2024 in the case of the DADLAF and 19 February 2025 in the case of the Peak District LAF. The set of recommendations which was subsequently produced is set out in bold below and was approved by DADLAF members at the meeting held on 6 December 2024.

It is recommended that when considering DMMO applications, priority should be given to those for multi-user unrecorded ways ie claims for bridleway and above. Multi-user routes, whether they are new Rights of Way or upgrades, would benefit the most people and help link up these currently fragmented networks; and giving them priority would fit in with sustainable transport policies. It is also recommended that this new Unrecorded Ways DMMO strategy considers routes in batches by area to reduce duplication.

Recommendation: That Members of the Peak District Local Access Forum approve this set of recommendations and agree that they are conveyed to the County Council in a letter which also raises concerns about the lack of resources which are currently available for dealing with this area of work.

Peak District Local Access Forum

Date: 19 February 2025

Item: 8

Title: Access Update

Author: Sue Smith

Purpose of the Report

The purpose of the report is to provide an update on issues related to access in the Peak District.

Defra Access Funding

In Year 3 of Defra's Access for All programme, the Authority has been delivering on more miles, more places, and more mobility. A report outlining items of expenditure was provided to the Forum in June 2024.

The £155.8k funding has been matched by £26.2k grant funding via the Foundation towards the new Changing Place at Parsley Hay. This is enabling improvements at North Lees campsite and for fast charging e-bikes to accompany the shorter hire periods for adapted cycles and trampers.

The surfacing works at the [Goyt Miles without Stiles](#) has near doubled the length of this accessible route. This has been enhanced by funding from the Foundation for maintenance along the existing 1 km section. At Fernilee Reservoir, new gates are being installed for a new Miles without Stiles route and access by cyclists and horse riders.

The improvements previously reported for the Monsal Trail/Coombs Road link are being considered by the Authority's Property Team as part of wider access improvements to link with Derbyshire County Council's interim White Peak Loop.

Monitoring

The biennial Ease of Use survey of 5% of the rights of way network is taking place using an app specially designed for this purpose. This allows for in-field recording of the condition and accessibility of rights of way. Accompanying apps record the details of any fails for action/reporting and for the type of structures, whether that be gates, stiles, steps, bridges, boardwalks etc.

Recommendation

That the report be noted.

This page is intentionally left blank

Peak District Local Access Forum

Date: 19 February 2025

Item: 9

Title: Consultation on Long-term Directions Restricting Access

Author: Sue Smith

Purpose of the Report

The purpose of the report is to notify the Forum on:

- (i) the consultations for the review of open access land exclusions; and
- (ii) a consultation for extending the long-term direction excluding public access at Silence and Old Grove Mines.

Background

In accordance with the Countryside and Rights of Way (CROW) Act 2000, the National Park Authority is reviewing its long-term directions and consulting on an extension to a long-term direction to restrict access rights.

In February 2024, the Forum received a report which identified the review process and the sites to be statutorily reviewed. The reviews at Deer Hill, Diggle, and West Nab have been completed.

Hollins Hill

The restriction relates to an exclusion of dogs whilst cattle are calving or have calves at foot. The Forum considered the original directions in 2004/05, and the reviews during 2010, 2015, 2020, and at the Forum meeting in October 2024.

The Authority has met with the landowner who has confirmed that the direction is still necessary and that there are no suitable alternatives. The direction is conditional on the concession path to the land being available at all times, the line of which is to be further assessed.

Crowden

The site is a clay pigeon shoot. The restriction was granted on appeal in 2005. The Forum considered reviews in 2010, 2015, and 2020.

The consultation relating to the statutory review is attached at Appendix 1. The consultation ends on 28 March 2025.

Silence Mine

The Authority has made a series of directions on public safety grounds since 2018 to allow for investigations and remediation of the instability. In June 2024, backfilling of the voids at the site commenced.

It is proposed to extend the duration of the direction by a further two-year period to 30 April 2027 to allow further consideration of the access that might be allowable.

The consultation is attached at Appendix 2.

Recommendation

- 1. That the LAF consider their response to the consultations at Crowden and Silence Mine, and for any at Hollins Hill.**

Countryside and Rights of Way (CROW) Act 2000

REVIEW OF STATUTORY DIRECTION

SUMMARY FOR PUBLIC CONSULTATION

Prepared by the Peak District National Park Authority
February 2025

1. INFORMATION ABOUT THE PUBLIC CONSULTATION

Access Authority: Peak District National Park Authority
Relevant Authority: Peak District National Park Authority
Local Access Forum: Peak District Local Access Forum

The Peak District National Park Authority is about to review the following direction:

| Land Parcel Name: | Direction Reference |
|---------------------------|----------------------------|
| Top Field, Crowden | 2014117473 |

Your views on the current direction are sought to assist the National Park Authority in deciding whether the restriction is still necessary for its original purpose; and if so, whether the extent and nature of the restriction is still appropriate. Annex 1 sets out the statutory requirements.

2. SUMMARY OF EXISTING DIRECTION

| Land Parcel Name: | Dates of Restriction | Reason for Exclusion |
|---------------------------|--|---|
| Top Field, Crowden | Excluded at all times until 31 December 2030. | Land Management/ Public Safety |

The PDNPA made an outline direction in 2004 to restrict CROW access on land used for clay pigeon shooting which required the applicant to give prior notification to the Open Access Contact Centre when shooting was required up to a maximum of 156 days pa. The applicant appealed against this decision on both the extent and duration.

At the inquiry, the inspector considered the evidence presented on usage and the area to which the direction should apply and decided that a permanent exclusion was necessary over the whole of the site.

As directed by the appeal decision, the PDNPA made a new direction in 2005 to restrict CROW access under section 24 and 25(1)(b) of the Countryside and Rights of Way Act in 2004, in order to prevent danger to the public from clay pigeon shooting and to allow the land to continue to be managed without undue cost or burden upon the landowner.

At the review in 2020, the applicant confirmed the extent and nature of the clay pigeon shooting.

3. SUBMITTING COMMENTS ON THE REVIEW:

| Reference: | Comments to: |
|---------------------------------|--|
| Top Field, Crowden – 2014117473 | sue.smith@peakdistrict.gov.uk |

If you wish to comment on the review of this direction then please do so by **28 March 2025**.

A map accompanies this notice.

Using and sharing your consultation responses

Any comments you make, and any information you send in support of them, will help us to determine the application and / or determine if the restriction is still necessary in relation to the review or reassessment of a current direction.

We may wish to pass such comments or information to others in connection with our duties and powers under the open access legislation. This may mean for example passing information, including your name and contact details, to the Secretary of State or their appointees, the Planning Inspectorate or to Natural England.

We do not plan to publish individual comments in full, but we may publish extracts from them when we report on our consultation(s).

There may also be circumstances in which we will be required to disclose your response to third parties, either as part of the statutory process for consideration of representations and objections about our decision, or in order to comply with our wider obligations under the Freedom of Information Act 2000 and the Environmental Information Regulations 2004.

If you do not want your response - including your name, contact details and any other personal information – to be publicly available, please explain clearly why you regard the information you have provided as confidential. However, we cannot give an assurance that confidentiality can be maintained in all circumstances.

Annex 1

In accordance with statutory guidance, the Peak District National Park Authority (PDNPA) has a duty to:

- review directions of a long-term character no later than their fifth anniversary; and
- revoke or vary directions where necessary.

Under CROW section 27(3) the relevant authority must review, at least every five years, any direction it has given that restricts access indefinitely; for part of every year; for part of each of six or more consecutive calendar years; or for a specified period of more than five years.

During the review the relevant authority must, having regard to the interest of the public in having access to the land, consider whether the restriction is still necessary for its original purpose; and if so, whether the extent and nature of the restriction is still appropriate for the original purpose.

Before reviewing a long-term direction the relevant authority must consult:

- the local access forum
- the applicant or his successor in title, where reasonably practicable – for directions under section 24 or 25 made on application; or
- the relevant advisory body – for a direction made under section 26.

The authority must also publish a notice on a website (and send a copy to statutory consultees) that must explain that the authority proposes to review the direction in question; where documents relating to the review may be inspected and copies obtained; and that representations in writing with regard to the review may be made by any person to the authority by the date specified in the notice.

Once consultation is complete the relevant authority should have regard to any representations it receives before making a decision. If following the consultation, the relevant authority decides to:

- leave the original direction unchanged, the relevant authority should record the date that the decision was made and should schedule a subsequent review where necessary.
- vary a direction, the relevant authority must give a new direction under the same section that was used to give the original direction. If the new direction is long-term, it must be reviewed within five years of the date it is given;
- revoke a direction, the relevant authority must give a new direction under the same section to revoke it. There is no requirement to review the new direction;

Before varying or revoking a direction the relevant authority must: consult the original applicant or his successor in title, where reasonably practicable – for directions given under section 24 or 25 on an application; or consult the relevant advisory body – for directions given under section 26; and in either case, follow the consultation procedures set out in the relevant authority Guidance but only if it proposes to give a new direction that would restrict access indefinitely or for more than six months continuously.



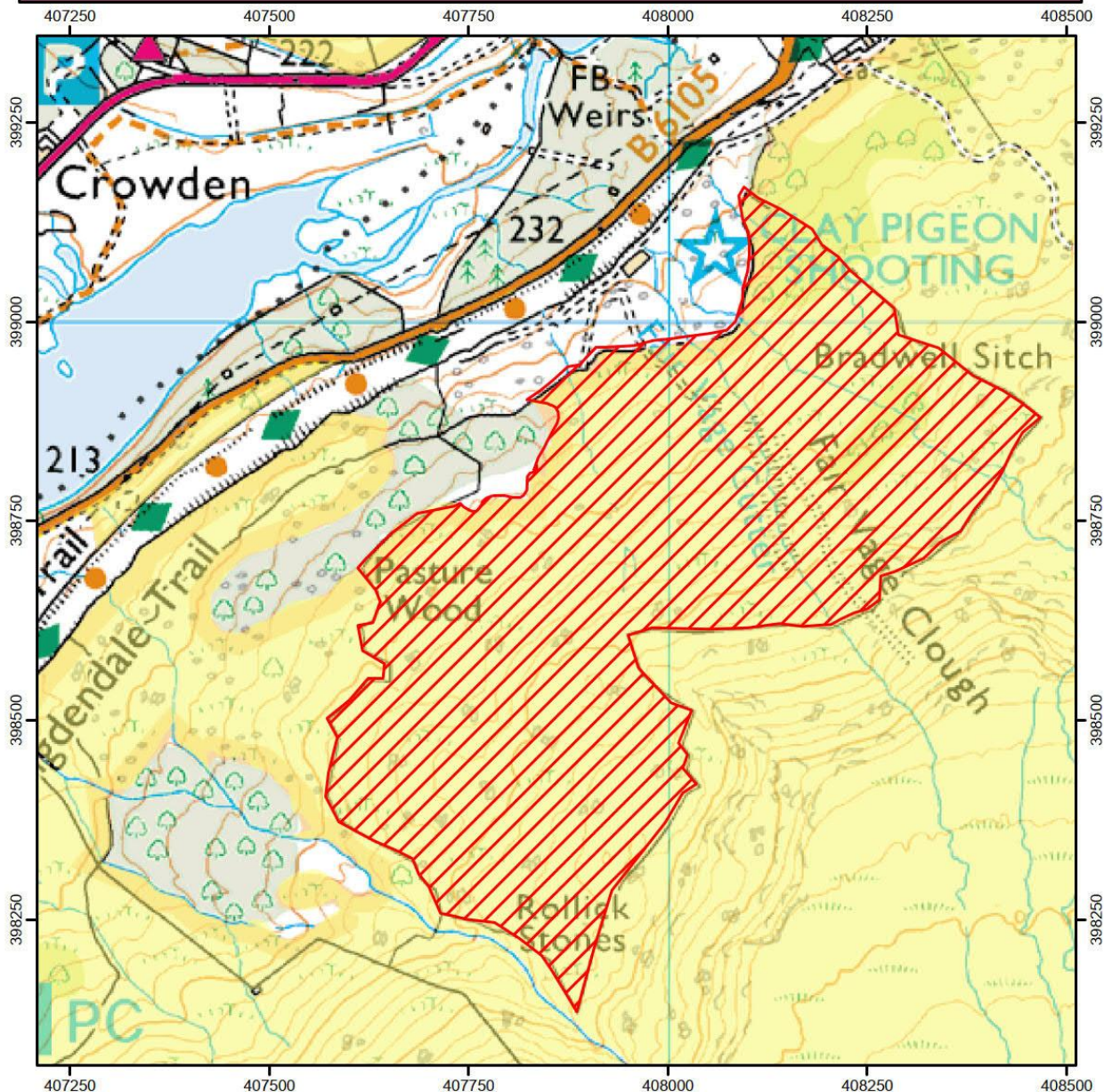
CROW Open Access: Consultation on review of restriction

Please see accompanying notice.

Consultation start date: 14 February 2025

Consultation end date: 28 March 2025

Case number : 2014117473



0 150 300 Metres



Restricted Open Access Land



Open Access Land



© Crown Copyright and database right 2025. All rights reserved. Ordnance Survey Licence number 100022021.

For more information call the Open Access Contact Centre on 0300 060 2091
or visit our website at www.gov.uk/right-of-way-open-access-land/use-your-right-to-roam

Appendix 2

SUMMARY FOR PUBLIC CONSULTATION

COUNTRYSIDE AND RIGHTS OF WAY (CROW) Act 2000

PROPOSAL FOR A LONG-TERM DIRECTION RESTRICTING ACCESS

February 2025

1. INFORMATION ABOUT THE PUBLIC CONSULTATION

Access Authority: Peak District National Park Authority
Relevant Authority: Peak District National Park Authority
Local Access Forum: Peak District Local Access Forum

| Land Parcel Name: | Direction Ref. |
|---|----------------|
| Silence & Old Grove Mines, Great Hucklow | 2018088745 |

The Peak District National Park Authority (PDNPA), as Relevant Authority, is proposing to extend the duration of the above direction until 30 April 2027 or until the completion of site remediation to the satisfaction of the PDNPA, as the Mineral Planning Authority, whichever is the sooner.

As the restriction of public access on this land is proposed to last for longer than six months continuously, public consultation is required to inform the proposal.

2. SUMMARY OF EXISTING & PROPOSED DIRECTION

| Land Parcel Name: | Dates of Restriction | Reason for Exclusion |
|---|--|----------------------|
| Silence & Old Grove Mines, Great Hucklow | Existing Direction – 30 April 2025 Proposed Direction – 30 April 2027 | Public Safety |

The National Park Authority made a direction under section 25(1) of the Countryside and Rights of Way (CRoW) Act 2000 in February 2018 and extended most recently in April 2023, to restrict public access at Silence and Old Grove Mines on the grounds of public safety relating to the instability of the land. The direction expires on or before 30 April 2025.

The PDNPA, as Mineral Planning Authority, has commissioned geotechnical investigations and approved an application to reinstate areas of surface instability at the site. Treatment of the voids commenced in June 2024 and within a further 2 years might have sufficiently progressed for the assessment of opportunities for some continuing public access, with due regard to monitoring and identification and remediation of any continuing instability. Pending this, it is necessary to protect the safety of the public by continuing the closure across the land affected.

Having regard to the instability at the site and nature and character of the land, the PDNPA is satisfied that a restriction of CRoW access to the extent identified is necessary on public safety grounds.

The direction is proposed to cease to have effect on 30 April 2027 or, if earlier, the date on which PDNPA, as Mineral Planning Authority, approves completion of the necessary remediation, having regard to the outcome of the geotechnical investigations undertaken by the PDNPA, as the Mineral Planning Authority, and an associated monitoring period. In the event of the instability being more extensive or requiring more extensive remediation or monitoring, the direction shall be further reviewed.

3. SUBMITTING COMMENTS ABOUT THE PROPOSED DIRECTION

| Reference: | Comments to: |
|---|--|
| Silence & Old Grove Mines – 2018088745 | sue.smith@peakdistrict.gov.uk |

If you wish to comment on this direction then please do so before **28 March 2025**.

A map accompanies this notice.

Using and sharing your consultation responses

We may wish to pass any comments you make or information to others in connection with our duties and powers under the open access legislation. This may mean for example passing information, including your name and contact details, to the Secretary of State or their appointees, the Planning Inspectorate or to Natural England.

We do not plan to publish individual comments in full, but we may publish extracts from them when we report on our consultation(s).

There may also be circumstances in which we will be required to disclose your response to third parties, either as part of the statutory process for consideration of representations and objections about our decision, or in order to comply with our wider obligations under the Freedom of Information Act 2000 and the Environmental Information Regulations 2004.

If you do not want your response - including your name, contact details and any other personal information – to be publicly available, please explain clearly why you regard the information you have provided as confidential. However, we cannot give an assurance that confidentiality can be maintained in all circumstances.



CROW Open Access: Consultation on review of restriction

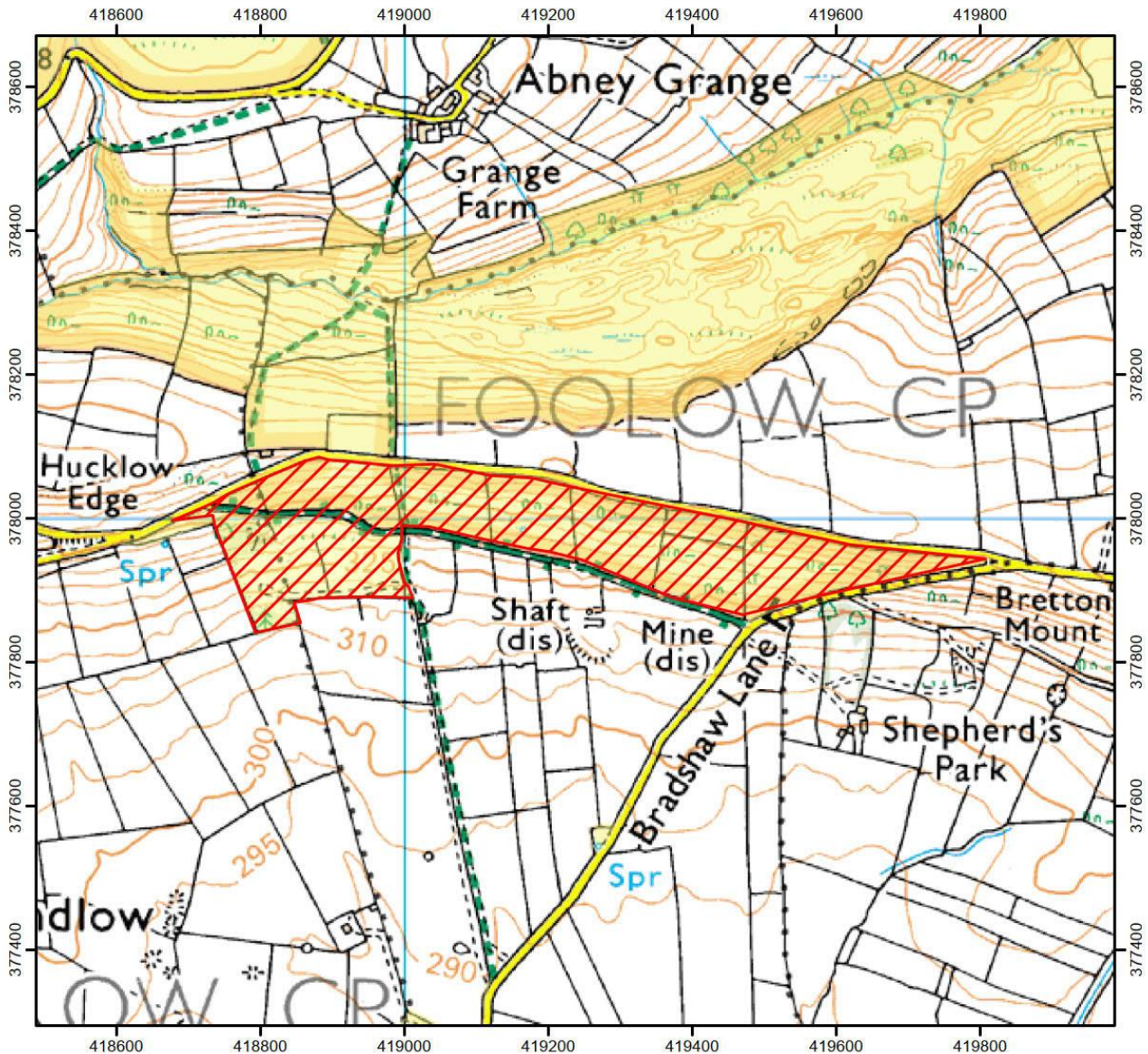
Please see accompanying notice.

This does not affect Public Rights of Way.

Consultation start date: 14 February 2025

Consultation end date: 28 March 2025

Case number: 2018088745



0 200 400 M

© Crown Copyright and database right 2025. All rights reserved. Ordnance Survey Licence number 100022021



CROW Consultation



CROW Access Land



For more information call the Open Access Contact Centre on 0300 060 2091 or visit our website at www.gov.uk/right-of-way-open-access-land/use-your-right-to-roam

This page is intentionally left blank

Peak District Local Access Forum

Date: 19 February 2025

Item: 10

Title: Active Travel Update

Author: Sue Smith

Purpose of the Report

The purpose of the report is to provide an update on the Active Travel England Capability Fund programme.

Background

In April 2024, the Peak District National Park received £100k of funding to develop a programme for active travel. This includes development of a Peak District Walking, Wheeling, and Cycling Infrastructure Plan.

An Active Travel Sub group, comprised of LAF members and other key stakeholders has been established to advise on and support this work.

Update

Following the workshops with Highway Authorities and major landowners, the Active Travel sub-group met to provide input into the identification and development of the high-level network of routes for walking, wheeling, cycling, and horse riding.

The [active travel consultation](#) on this high-level network is now live and runs until **16 March 2025**.

The consultation asks for

- 1) Important locations relating to the published network
- 2) Suggested improvements
- 3) Any other comments.

It also asks for details of where people are coming from, how often they visit or would visit if improved, and the type of activity. This is to help understand and prioritise what is needed for everyday journeys or the longer recreational routes.

The consultation includes interactive maps to show existing and proposed routes and allow for locational pins to be placed. Proposed routes are indicative only and will be subject to feasibility.

The network looks to connect main areas of population and key visitor attractions. Routes include former rail trails, Sustrans' NCNs, and those previously identified in the Peak District's Cycle Strategy and as part of Derbyshire's Key Cycle Network. Routes up to 10km beyond the National Park boundary are also shown for connectivity to and around the National Park.

A meeting of the Sub-group is proposed to co-ordinate the LAF consultation response.

Recommendation:

- 1) To note the contents of the report and to consider the response to the active travel consultation at a future meeting of the Active Travel Sub-group.**