

3. **REVIEW OF MEMBERSHIP OF OUTSIDE BODIES (A.1115/ST/RMM)**

Proposal

1 This report asks Members to consider and agree changes to Members' involvement in outside bodies following a review process. This review only applies to Member involvement as staff will continue to work with all bodies identified as appropriate.

RECOMMENDATION:

2 **That**

1. **Members consider and decide whether to withdraw (as soon as is appropriately possible) from the outside bodies where specified in Annex 1.**
2. **External opportunities to involve Members in those areas identified in the report at paragraph 9 be identified with proposals being brought back to a future meeting.**
3. **The report to the Authority in July seeking appointments to the revised list of outside bodies also makes proposals for streamlining the process for making future appointments.**

Policy/Legal Background

3 The last time Members undertook a review of appointments to outside bodies was in October, 2004. The Authority recommended that a review of Members' involvement in these outside bodies be made every two years; this report reflects the findings of that review.

4 Under existing legislation the membership of the Authority will be reduced from the current 38 to 30. This new structure will commence on 8 May 2007.

5 In October 2006 the Authority approved Part Two of the new National Park Management Plan (NPMP) and an associated set of outcomes and actions.

Key Issues

6 The combined impacts of the reduction in the number of Members and the approval of a new NPMP has meant that the Authority needs to prioritise its resources more effectively in terms of engagement with outside bodies through Members.

7 A toolkit was developed to enable an appraisal to be undertaken of current Member participation in outside bodies against the NPMP outcomes. A summary of how this toolkit was developed and used is set out in the Appendix. It involves two stages:

- An initial review to give a score of high, medium, low need for member involvement
- An assessment of coverage of outside bodies against the NPMP outcomes

8 The results of the appraisal show that currently member appointments to outside bodies focus heavily on the outcomes relating to:

- Recreation and Tourism;
- Traffic, Travel and Accessibility; and
- People and Communities

9 Those with the least levels of coverage are respectively:

- Mineral Extraction;
- Climate Change and Natural Resources; and
- Cultural Heritage

10 The Authority should therefore consider reducing participation in those partnerships covering areas of: recreation and tourism, traffic, travel and accessibility and people and communities where there is a score of low need and where there is excessive coverage or duplication. Conversely, the Authority needs to strengthen its representation in those areas where there is under representation.

11 The conclusions of the appraisal are that Members should consider withdrawing from the following outside bodies:

Outcome 6 (Traffic, Travel and Accessibility)

- DCC Joint Advisory Committee
- Trans Pennine Rail Group

NB A substantial review of the Rural Transport Partnerships (including Hope Valley RTP and Derwent Valley RTP) is currently being led by Derbyshire County Council. It is likely that there will be a significant change to the structures of these partnership following the review including the establishment of an Accessibility Partnership to oversee the work of the RTPs. The results of this review are likely to be announced in the summer at which point the Authority will be able to make member appointments, until that time, however, it is proposed that no changes are made to representation on the RTPs.

Outcome 7 (Recreation and Tourism)

- Trans Pennine Trail Member Advisory Group
- Dove Stone Advisory Steering Committee
- Cauldwell's Mill Trust
- National Stone Centre

12 In addition to the above, consultation on this review has highlighted suggestions (for Members' consideration in addition to the above) to withdraw from:

- Derbyshire LGA as it already sits on the East Midlands LGA.
- Derbyshire Wildlife Trust
- Warslow Moors Consultative Group
- Local Government Association Rural Commission
- Peak District Rural Deprivation Forum (now defunct)
- Derbyshire Tourism Forum (now defunct)

13 It has been suggested that we need to find an easier way to make annual appointments to outside bodies. The report to the July Authority meeting will make proposals for future arrangements. Because of the reduction in and changes to the membership this year it is proposed that the existing process for appointments continues for the Authority meeting in July.

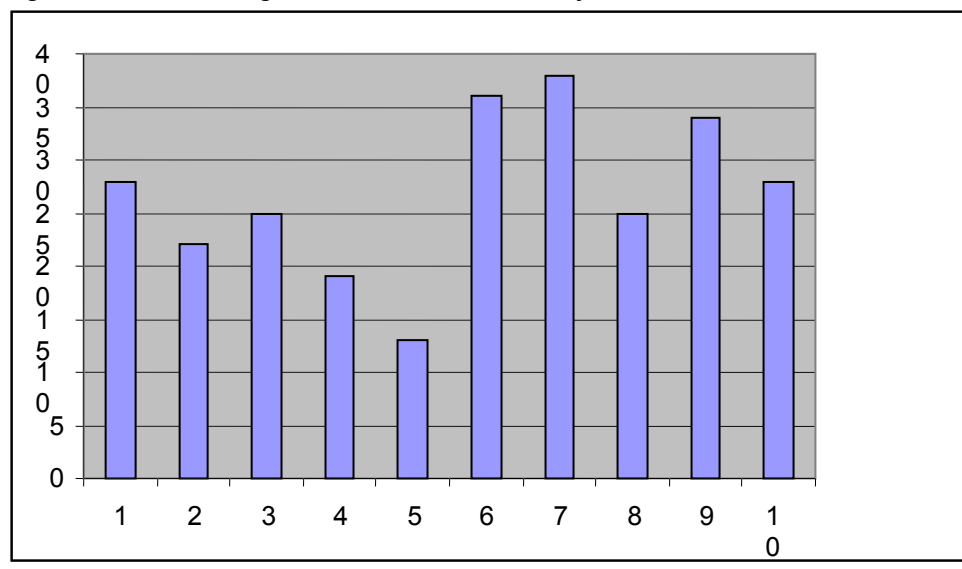
APPENDIX

Background

- 1 In undertaking this appraisal an initial review of each outside body was undertaken by officers and the Authority Chair. This qualitative assessment identified whether the need for member involvement with the outside body was high, medium or low based upon a number of factors including: performance, length of membership, focus and political factors. This approach was then complemented by a quantitative assessment of how each outside body contributed to each outcome. A score of 0 was given where the outside body made no contribution towards a particular outcome; a score of 1 was given where there was some contribution made and a score of 2 given where the outside body focused clearly upon that outcome. This enabled one to assess the coverage of each outcome by outside bodies, and ultimately our ability to influence decision making.

Figure One shows the coverage of NPMP outcomes by outside bodies, the horizontal (x-axis) relates to each of the ten NPMP outcomes and the vertical (y-axis) relates the level of 'coverage' by the outside bodies. A description of each of the outcomes as they relate to the numbering is set out in Annex Two.

Figure One: Coverage of NPMP outcomes by Outside Bodies



Resources

- 2 Members may claim travelling and subsistence for attendance at meetings to which they are appointed. In order to settle claims, which are checked by Auditors, Members are asked to ensure that they sign a record of attendance at all meetings. This will be the only means by which attendances are correlated.

Risk Management

- 3 The Authority risks being unable to influence policies, programmes and plans in areas where there is under-representation of Member involvement. This appraisal and recommendations help focus the limited Member resource more effectively. The review only applies to Member involvement and staff will continue to work with all bodies identified as appropriate.

Human Rights, Equalities, Health & Safety

4 There are no issues to highlight.

Consultees

5 Management Team, Members, Heads of Service and other staff have been consulted on this report. Amendments to the list at Annex 1 have been made in light of comments received. Additional comments from Members for future consideration include:

- Suggest that thought be given to officer feedback/consultation with member, for outside bodies that have no member involvement after July 07 but that do have some internal member focus e.g. areas covered by Member Representatives
- Worth thinking about ad hoc member involvement in an outside body for occasional strategic meetings with responsibility for appointment resting with Democratic Services in liaison with the relevant subject area officers. Especially in cases where we might be putting a PDNPA case at a meeting attended by Members (as opposed to officers) of the other partner bodies.

Enclosures

6 Annex 1: Proposals following review of outside bodies
Annex 2: National Park Management Plan outcomes in explanation of figure 1

List of Background Papers (not previously published)

7 None

Report Author

8 Steve Turner, Head of Policy, Research and Partnerships
Ruth Marchington, Director of Corporate Resources

Publication date

Thursday 22 March 2007