



Members' Local Plan Steering Group

Kickstart Meeting

November 2019

Brian Taylor
Head of Policy and Communities

•



Agenda

- TOR and governance
- Rationale for review
- Corporate plan commitments
- Timeframes
- Engagement Planning
- Evidence scoping
- Parish Statements
- Early surveys



TOR and Governance as agreed at March Authority

The Local Plan Review Steering Group is an informal group whose purpose is to advise officers and Members in reaching any decisions to moving forward planning policy.

- To comprise 10 Members as follows:
 - Chair and Vice Chair of Planning Committee
 - Chair of the Authority
 - Member Representatives for:
 - Communities,
 - Food and Farming
 - Health and Wellbeing
 - Landscape and Heritage
 - Tourism and Participation
 - Rural Economy
 - Thriving Natural Environments



PEAK
DISTRICT
NATIONAL
PARK

TOR and Governance as agreed at March Authority



- The meeting will be chaired by the Chair of Planning Committee or in their absence the Vice Chair of the Committee
- The Steering Group has no decision making powers but its recommendations (albeit of a majority) will be reported directly to the Authority or the relevant Committee;



TOR and Governance as
agreed at March Authority



Should allow full participation from other Members and may consult the Members' Forum or a Member Workshop event as it deems necessary;

Should welcome input and advice from Officers as appropriate.



PEAK
DISTRICT
NATIONAL
PARK



PEAK
DISTRICT
NATIONAL
PARK

Responds to
National Character
Areas

Settlements
interspersed with
areas of high
landscape
designation

Close relationship
to urban
populations





Rationale for Review

- Recently adopted DPD means we are NPPF compliant
- Not under scrutiny of 5 year land supply and growth targets
- Review the current strategy
- Reflect on the sustainability of the plan and address big issues:
 - Climate change
 - Communities
 - Wildlife
 - Visitor management

Corporate Plan Commitments

- KPI's for improving engagement
- Expanding use of social media
- Reaching new audiences
- Shaping the place

Timeline

- **2019/20 – Year 1 scoping and evidence collection**

During this period the project team will:

- Develop the engagement plan;
- Undertake early engagement with all Parishes through our Parish Statements
- Draft a State of Communities Report
- Generate other strategic evidence reports
- Commence Statement of Common Ground with constituent and adjoining planning authorities

Timeline

- **2020/21 – Year 2 Generate issues and options**

During this period the project team will:

- Complete evidence collection; and
- Begin to compile Issues and options
- Commence early debates on broad issues (using digital media and workshop style events)

Timeline

- **2021/22 – Year 3 Consult widely on focussed issues and options**

During this period the project team will:

- Undertake a formal consultation phase on focussed issues and options for the Local Plan; and
- Collate responses
- Feedback to member group and the Authority and seek steer

Timeline

- **2022/23 – Year 4 Draw up preferred options or draft plan**

During this period the project team will:

- Draw up the first draft plan either in final plan form or as preferred options depending on outcome of the previous stage;
- Consult on draft plan/preferred options
- Collate responses
- Feedback to member group and the Authority and seek steer

Timeline

- **2023/24 – Year 5 Submission and Examination of Publication version**

During this period the project team will:

- Finalise the plan
- Consult on Publication version
- Consider early preparation of modifications and scope for additional consultation
- Collate the plan, modifications (if needed), representations and supporting documents for submission to the Secretary of State (PINS);
- Recruit Programme Officer
- Prepare for and administrate independent examination
- Respond to any requests for further modifications

Adoption 2024

Engagement Planning

- Copy of draft plan to be circulated for comment.
- Refers to legal requirements
- Statement of Community Involvement
- Corporate plan targets



Evidence scoping

Economic Development

What do we have already?	What do we need?	Links to ...	Priority/Timescale	How/Who?
<ol style="list-style-type: none"> 1. Look at PP's for farm diversification. What are they moving into? 2. DDDC Economic Plan 3. Employment land review) 2009 4. Hearn report for Bakewell 2016 5. Marketing to support tourism 6. EQM 	<ol style="list-style-type: none"> 1. State of the economy 2. Business survey inc value of landscape to people and business 3. What will the change to farming practices be? Climate change = less animals and more arable? 4. Broadband – tap into county and city roll out programmes to understand how far roll out has reached. Plus plans for 5G 5. Where are people still struggling to connect? 			



Parish Statements

- Every parish covered
- Village level data providing insight into state of communities
- Evidence for plan review
- But also a start of community development work

Taddington, Blackwell in the Peak and Brushfield Parish Statement (draft)



Taddington lies to the south of the A6 by-pass, 6 miles equidistant between Bakewell and Buxton. It is one of the highest villages within the National park at around 1,000 feet above sea level, with the weather to match.

There is evidence of human settlement here from bronze age burial mounds on the plateau, including Five Wells. There has been a church/chapel in the village since the 4th century. The present church dates back to the 14th century although there are earlier artefacts. It is Grade 1 listed and set within a 4 acre graveyard which requires extensive maintenance. The village was originally an agricultural village located on transport crossings. It retains some of its linear form and strip fields and is notable for its network of planned medieval watering lanes, leading to the High Well. Its Conservation Area was designated in 1997 but its boundaries were tightly drawn and does not encompass most of the wider surviving strip field system.

On the hill to the south of the village lies the High Well Recreation Ground, also 4 acres, donated to the parish as a war memorial. The area is a haven for wildlife and plants but its contours make it difficult to maintain. Beyond it, is High Mere, on common land with vestiges of the original limestone heath.

Taddington is located within the limestone hills and sloped character of the White Peak area and described within the Peak District Landscape Characteristic Assessment (LSAP2009).



Winkle Parish Statement (draft)



Community Aspirations (taken from the parish questionnaire 2005)

The findings of the parish questionnaire are still relevant today. The 94% response rate to the questionnaire indicates how invested the community are in their parish.

- The residents of Winkle cherish the landscape, traditional buildings, open views and tranquillity within which they live with the majority of people wanting Winkle to stay as it is
- The church and primary school are focal points for the community and are highly valued. The community are keen to explore how the primary school can be utilised outside of school hours for both children and adults
- Traffic speed is a local concern and better road signage would help notify drivers of other road users and the need to slow down
- New housing would be welcomed, particularly conversions and low cost housing for local people
- Mobile phone reception is poor and the parish would like to retain their telephone box
- The parish have researched the history of Winkle and this is available on the parish website
- News and information about events etc. is distributed to the community via a closed Facebook group, the parish magazine, the Link Community magazine and by word of mouth
- An improved dialogue between Peak District planners and the parish would be welcomed



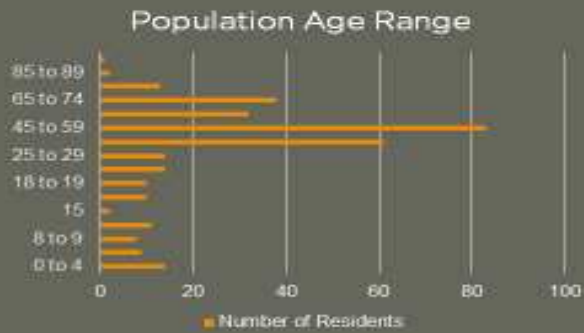
**PEAK
DISTRICT
NATIONAL
PARK**



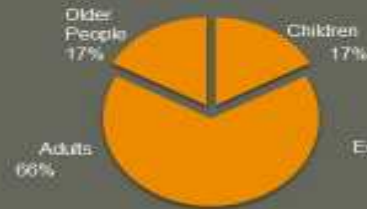
Chelmorton
Parish Statement (draft)



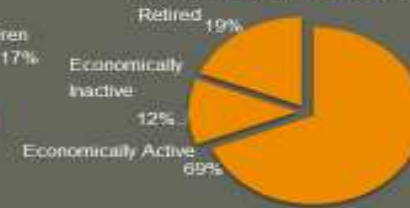
Population and Demographics



Children, Adults and Older People



Working and Non Working Adult Population (18+ years)



KEY:
Children: 0-17 years
Working Age: 16-64 years
Older People: 65 years +

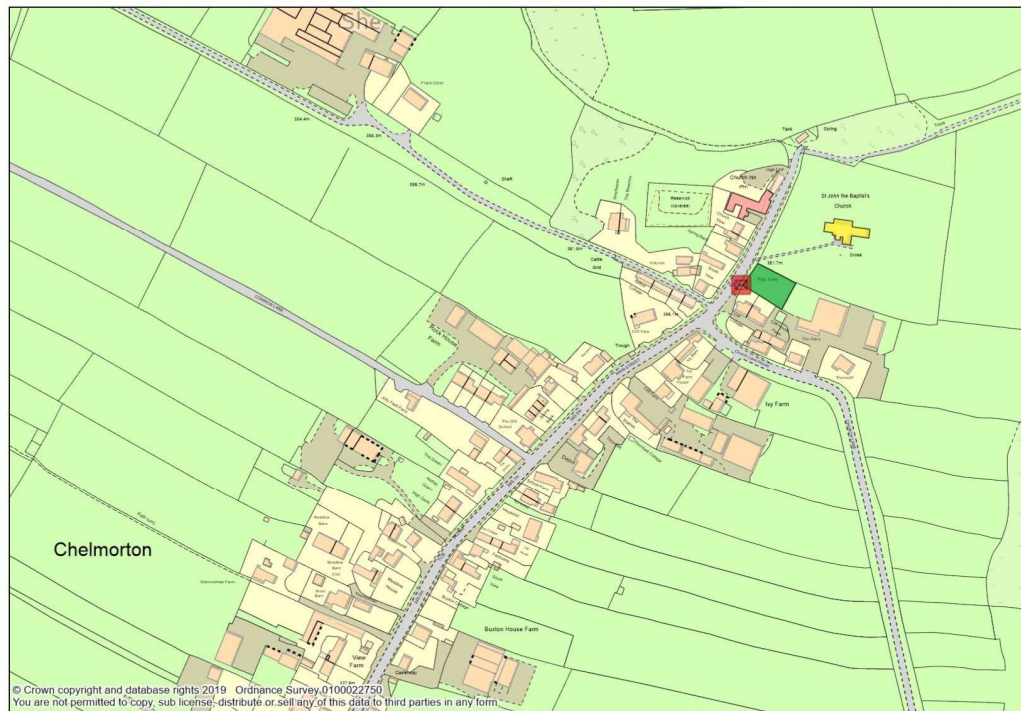
The parish of Chelmorton has a population of . residents (2011 census).

Source: Census 2011



Chelmorton
Parish Statement
(draft)

Chelmorton and its Services



Ke

- A1 Shops
- A2 Financial and Professional Services
- A3 Restaurants and Cafes
- A4 Drinking Establishments
- A5 Hot Food Takeaways
- B1 Business
- B2 General Industrial
- B8 Storage or Distribution
- C1 Hotels
- C2 Residential Institutions
- C2A Secure Residential Institution
- C3 Dwellinghouses
- C4 Houses in Multiple Occupation
- D1 Non-Residential Institutions
- D2 Assembly and Leisure
- Camp Site
- Allotments
- Playground
- Playing Field
- Public Car Park
- Sui Generis
- Bus Stop
- Notice Board
- Post Box
- Telephone Box
- Cash Point
- Public Toilets
- Defibrillator



Early Surveys

- Forms part of scoping approach
- Gaining early instinctive views, perceptions, understanding of policy
- Setting out expectations of content for a new plan
- Example survey form for members and specialist officers



Dear Member/Colleague (delete as appropriate),

We are keen to gain your views on the current planning policies contained within the Development Plan: the Core Strategy DPD (2011) and the Development Management Policies DPD (2019).

As a Member of the Authority/As an employee of the Authority (delete as appropriate):

- What do you think works well?
- What not so much?
- Which policies would you like to see changed? How?
- Are there any areas that aren't currently covered by policy that you'd like to see?
- Are there any current policies that you would like to see developed further?
- Are there any policies you would like to be stricter? How?
- Are there any policies you would like to be more lenient? How?
- Are any policies difficult to understand/apply? Which one(s)? Why?
- Have you identified any anomalies in/with the policies?
- What do you think of the current format, length, structure, chapter order and emphasis of the documents?

Your thoughts on such questions (and anything else that you can think of) would be very much appreciated.

To aid your thinking, we enclose some sub-headings to collate your views. If a view relates to a particular policy, please include the policy number alongside your comment.

Please respond with your comments, to policy@peakdistrict.gov.uk by XXXX.

Yours faithfully

The Policy & Communities Service



**PEAK
DISTRICT
NATIONAL
PARK**



	<u>Comments</u>
Format/Length/ Structure/ Order/ Design/Emphasis etc.	
Spatial Vision & Outcomes	
Development Strategy	
Built Conservation	
Nature Conservation & Landscape	
Economy & Farming	