

APPENDIX A

Figure 1 Midhope Moor track 2020 – the track is starting to break up in a number of locations along the clough. Limited vegetation growth on the mesh (probably as it is laid on a crushed stone).



Figure 2 Midhope Moor track in 2018, showing that the track has been built up in this location.



Figure 3 Aerial photo of midhope track in 2005

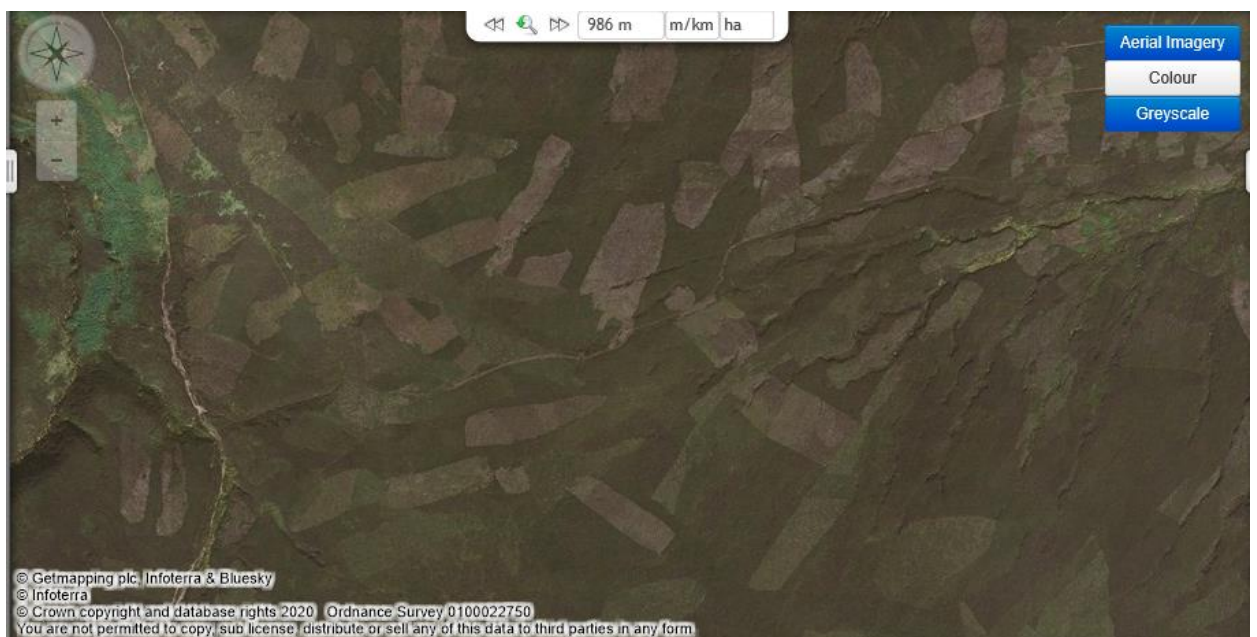


Figure 4 The new track has been sited parallel with the original route in places, which would have resulted in additional habitat damage.



Figure 5 Heather brash cut alongside the track and used to repair eroding surfaces



