

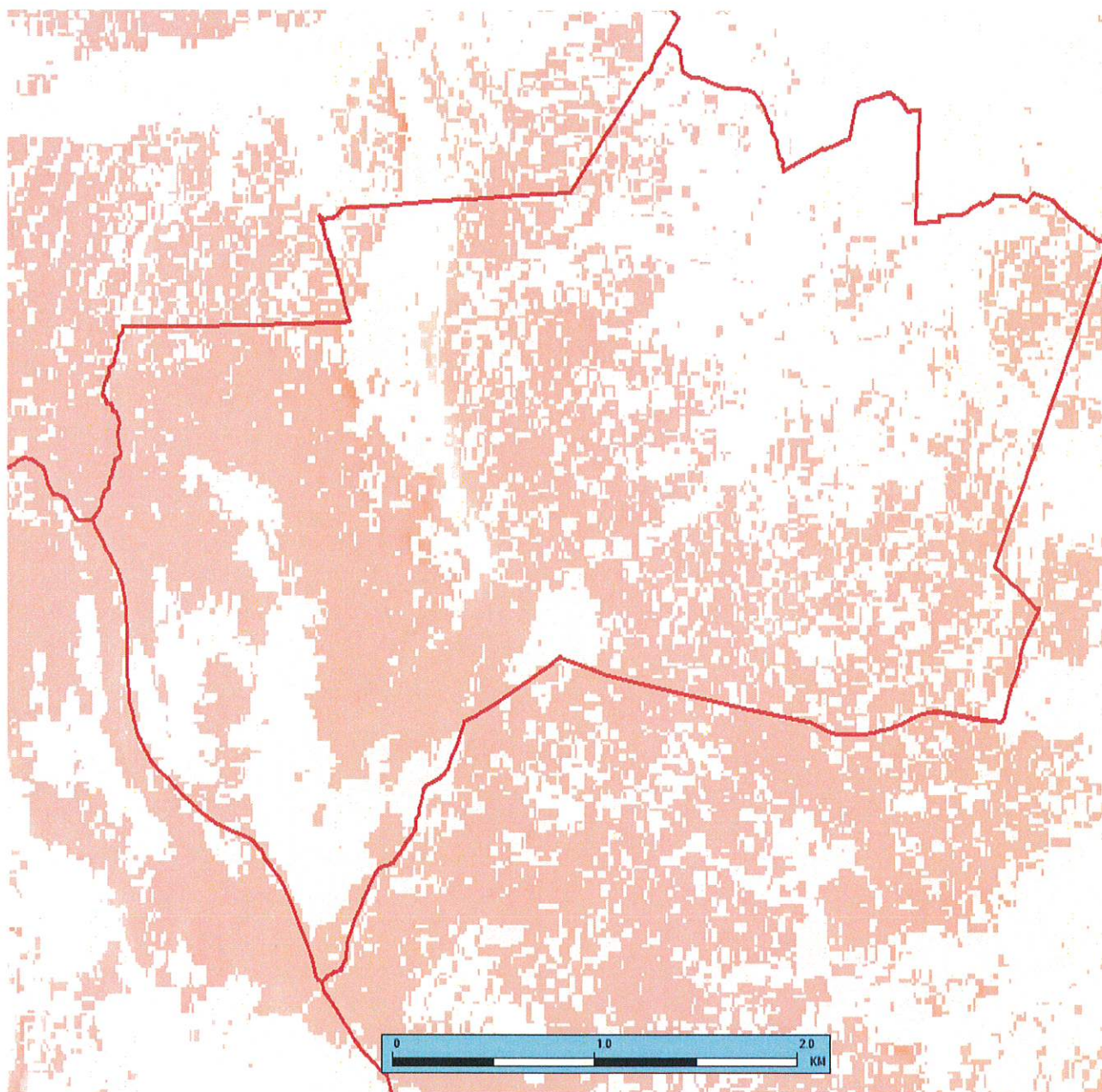
From: Agent Agent@wentworthestate.co.uk
Subject: RE: Midhope - Fire Plan
Date: 3 June 2021 at 16:25
To: Dan danrw@wakefieldestate.co.uk



Dan,

Here are some maps for you.

We don't have your track mapped ourselves. I can load it in if you send me a map of some sort or you can scribble over prints of these images.

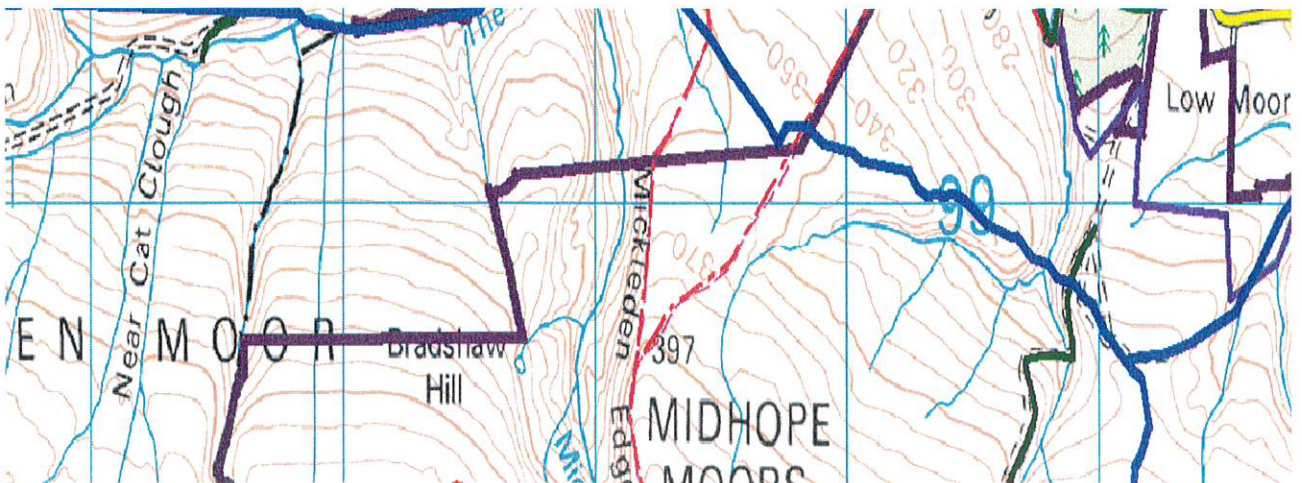


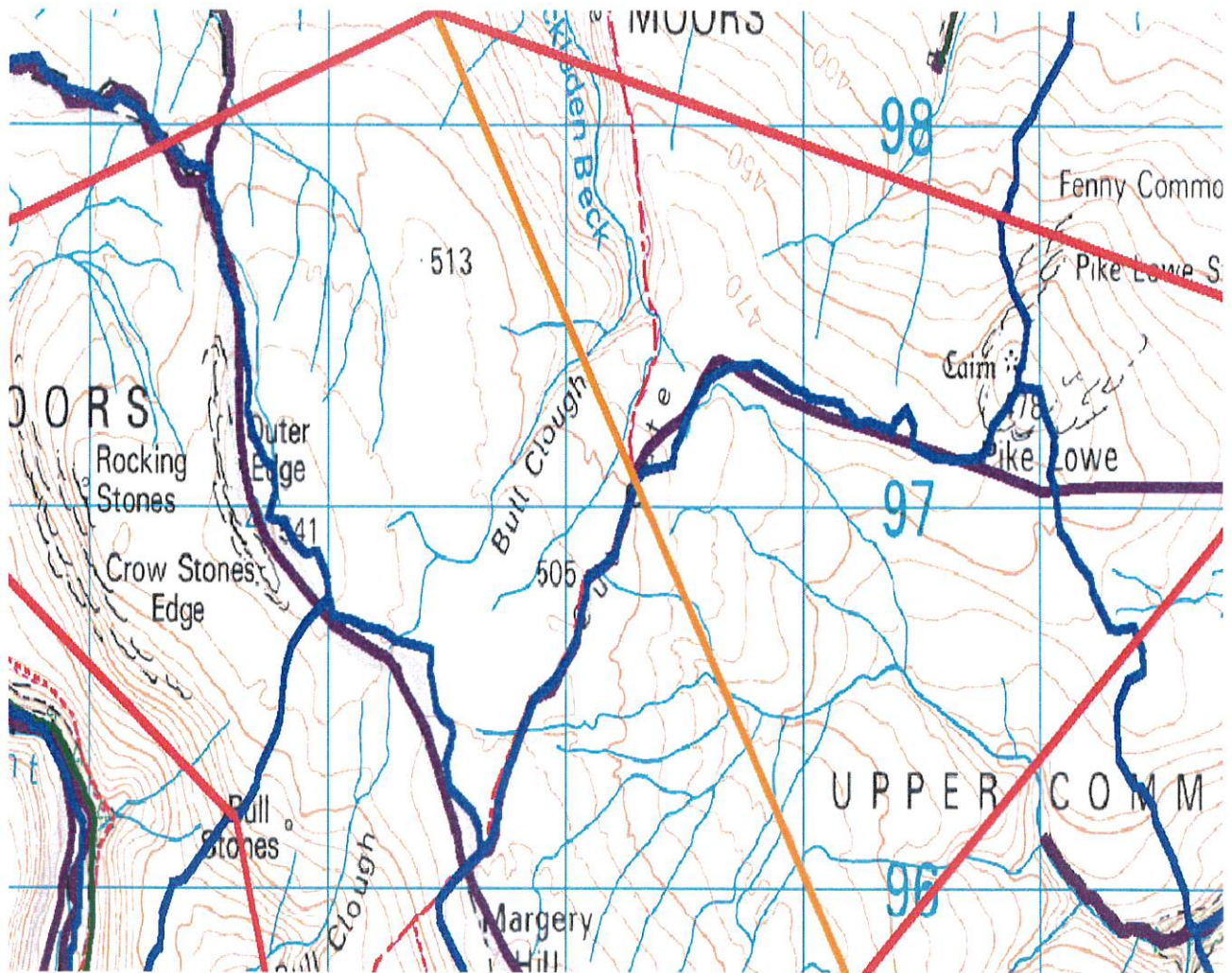
Flame length/fire intensity under average weather conditions.



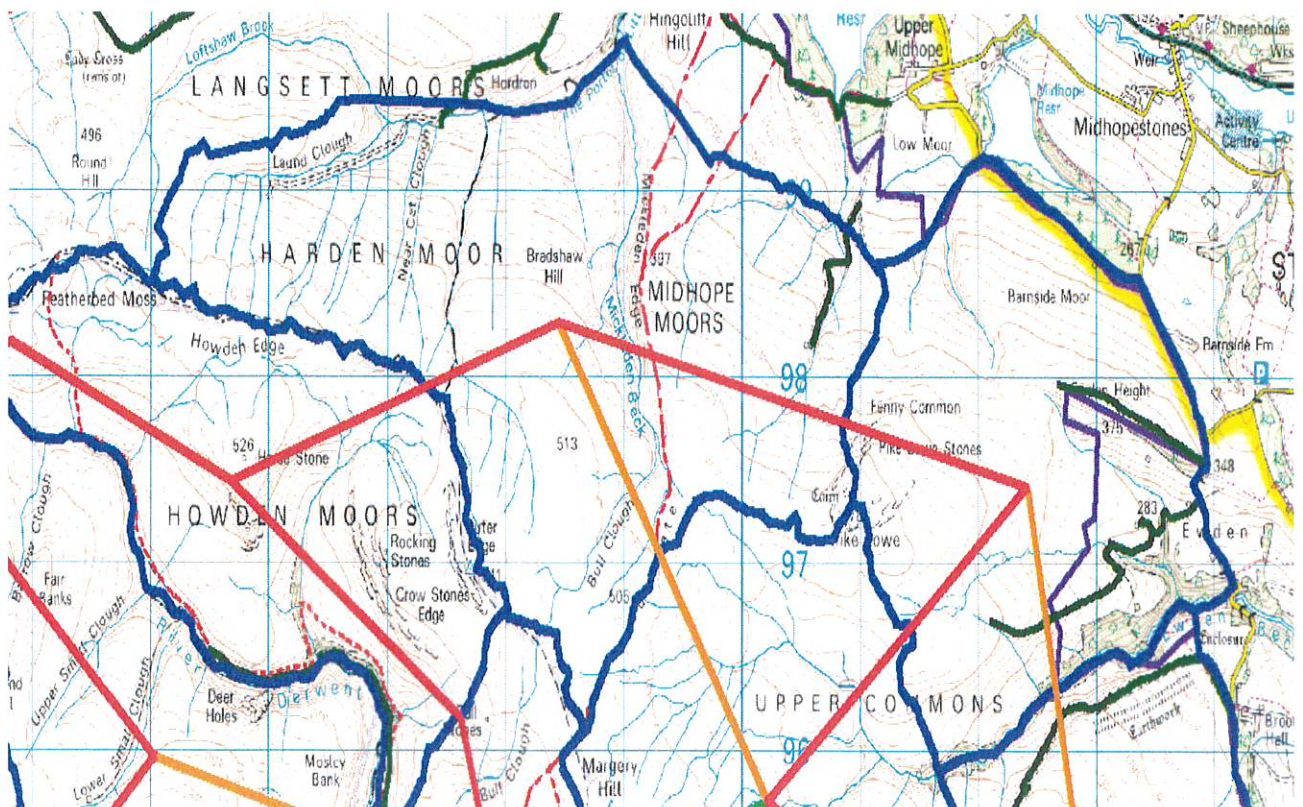


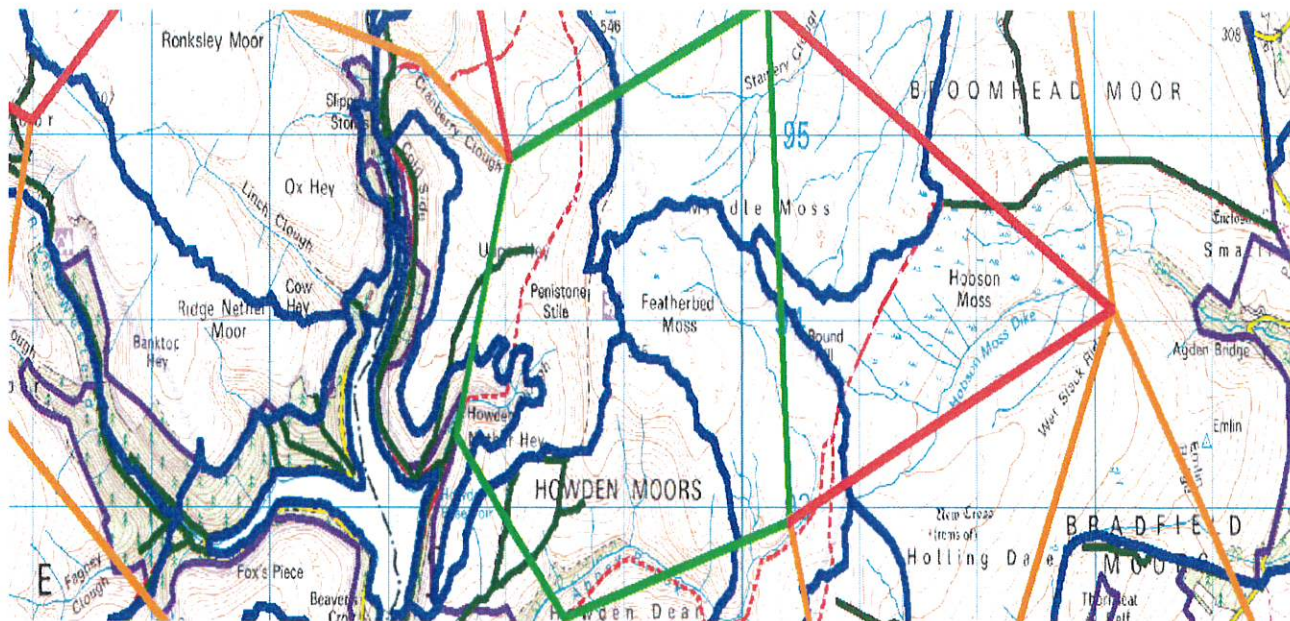
Flame length/fire intensity under extreme weather conditions.



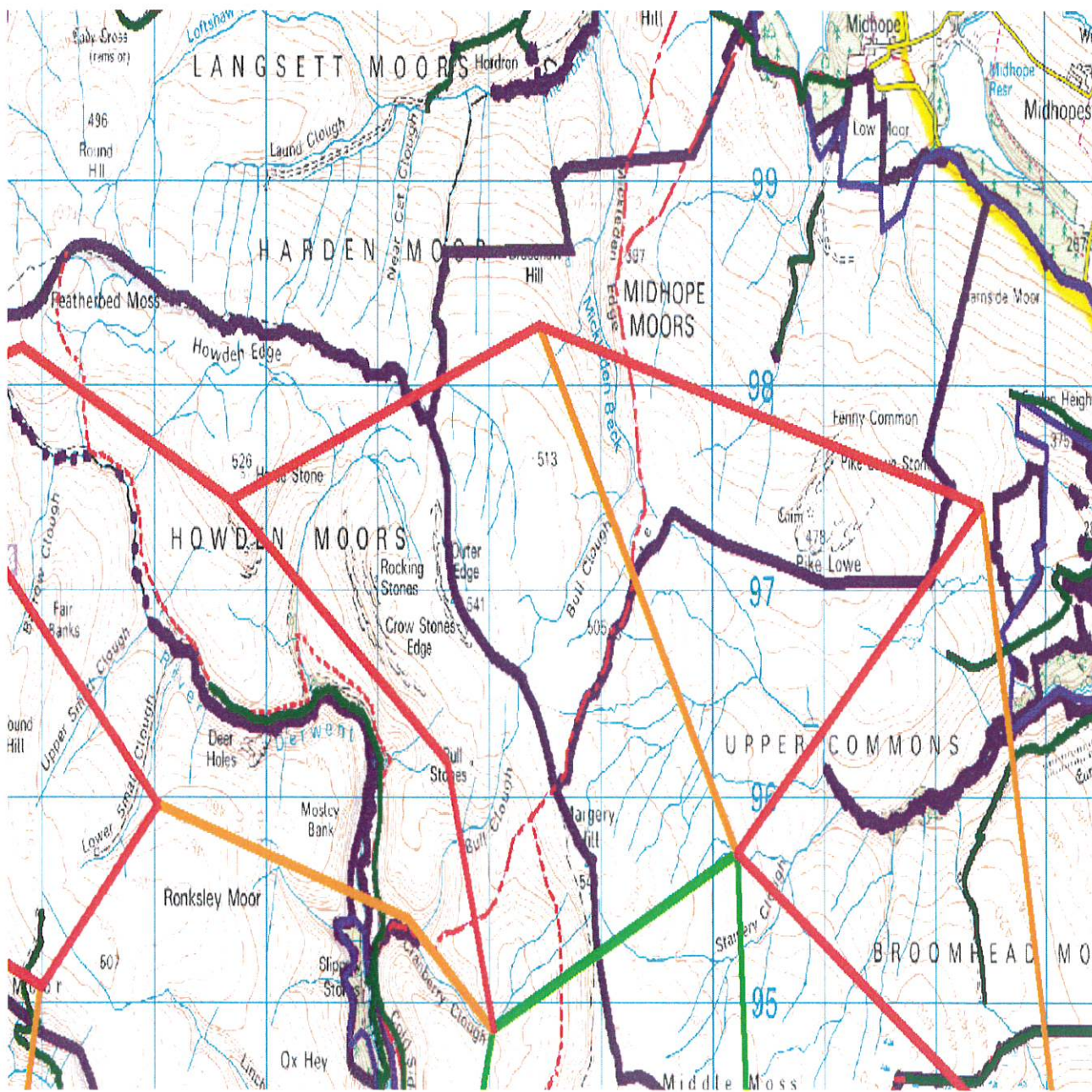


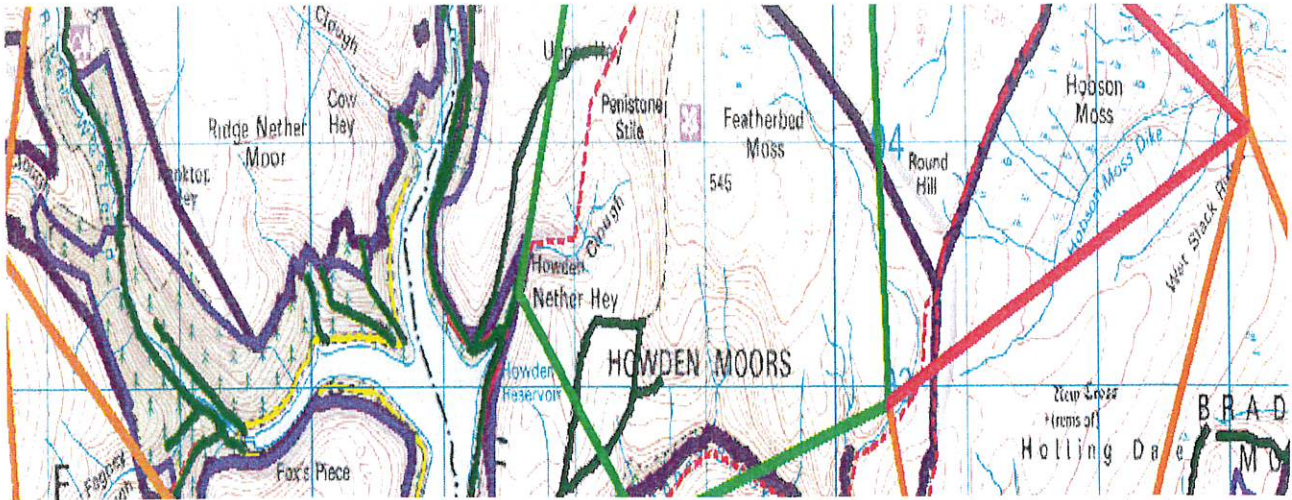
Fire behaviour polygons (blue boundaries) and interconnectivity twixt polygons (red are beyond FRS control, orange are controllable in average weather conditions). 4x4 routes shown dark green.





Wider area behaviour polygons and connectivity





Connectivity twist ownerships (black boundaries) showing problematic connectivity between Midhope and Howden and mixed connectivity between Midhope & Broomhead.

The approach we have adopted to strategic risk assessment is endorsed by DEFRA, NE, PDNPA, FC, England and Wales Wildfire Forum and Local Fire Services who have joined webinars and verbally commended and support the work. It is being cited as suitable for roll-out to other moorland locations.

Regards
Anthony