

Delivery Plan for Wildlife in National Parks

This document is one of a suite of 4 inter-connected plans devised by the ten English National Park Authorities to drive action in nature recovery in response to the 25 year Environment Plan.



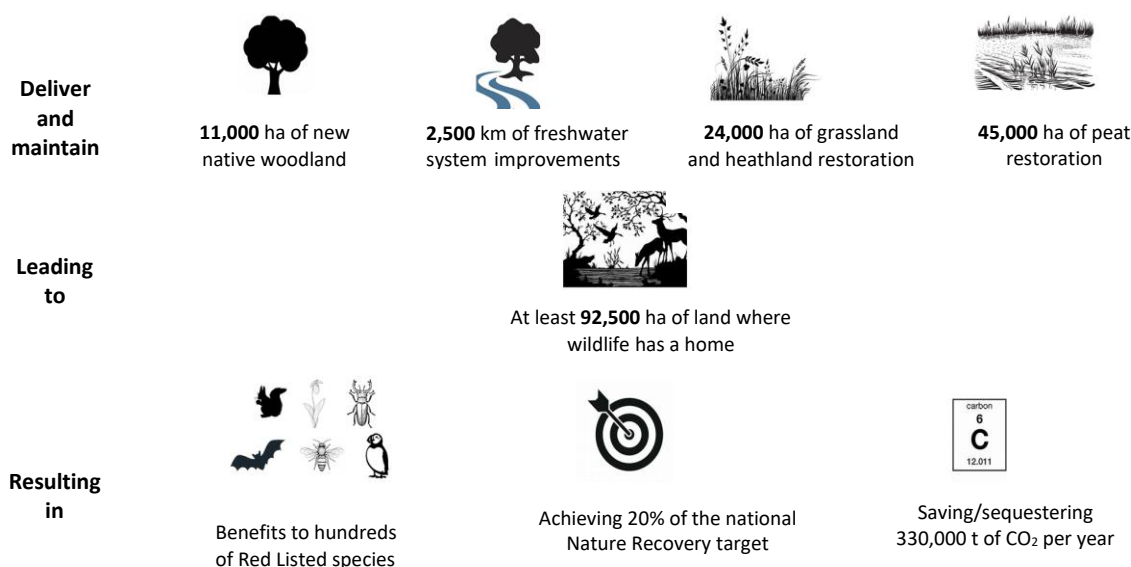
Nature Recovery vision - *National Parks sit at the heart of the nation's nature recovery network; we are places where wildlife flourishes, habitats are maintained, restored, and expanded, and where everyone can experience nature and wildlife at their best. Strong local partnerships in each National Park will deliver 20% of the government's nature recovery target on 10% of the land, saving/sequestering 330,000 tonnes of CO₂ per year.*

We will work together, and at scale, to transform nature's recovery in National Parks. We commit to developing a nature recovery programme for National Parks that:

- Identifies zones to deliver concentrated habitat enhancement and improved functionality
- Prioritises species to be safeguarded and re-introduced
- Increases tree cover and restores peatlands, grasslands, heathlands and other habitats, with the principle of right habitat, right place, right reason
- Provides nature based solutions to climate change resilience.
- Restores soil structure and health to improve function (carbon storage and water management)
- Implements long-term invasive non-native species control programmes
- Establishes buffer zones and green and blue infrastructure corridors linking National Landscapes, National and Community Forests, and urban areas to create a genuine national network where everyone can access and experience nature and wildlife at their best.

How will we do this: we commit to working through our strong local partnerships, to co-create the plans with farmers, landowners and communities. So we achieve sustainable change that supports the community in their role as custodians and identifies investment in nature recovery to help support viable farm businesses. These nature recovery programmes will form the backbone of our future National Park Management Plans.

This will deliver in the first 10 years, as a minimum:



Our programme to achieve the vision

Working at a landscape scale is a strength of National Park Authorities. We don't own much of the land, only around 10%, so we regularly work with farmers, landowners, the community and many other bodies across the entirety of National Parks. With a breadth of collective expertise - ecologists, planners, environmental scientists and rangers - we know our landscapes in depth, and we know the impacts that climate change and biodiversity loss are having on them. This gives our local partnerships many of the answers to nature recovery. We will work together and with Natural England and the National Association for AONBs to place these targets and our work across protected landscapes at the heart of the nature recovery network – making us more than the sum of our parts. We also need the policies, funding and collaboration to support delivery, both locally and nationally. We will monitor progress against this Plan and undertake a light-touch review each year.

How can you help?

Champion nature recovery in national landscapes with us:

- Ministers to champion National Parks at the heart of the national nature recovery network
- Defra to strengthen the role of National Park Management Plans, so they are the local nature recovery strategies for National Parks, and back their implementation with stronger legal status.
- Partners to collaborate with us to agree a joint and supportive approach to get more wildlife in National Landscapes.

Policies and powers to support nature recovery:

- National Parks to be identified as priority areas for funding within ELMS - with priorities within each National Park identified and agreed at a local level, within a national framework, informed by National Park Management Plans which will play a formal role in determining how those national and local priorities can be delivered. NPAs have a key role as 'environmental brokers' – linking buyers (public and private sector) of environmental goods with potential providers (landowners, managers and farmers).
- The National Peat Strategy and English Tree Strategy to fully recognise the need for positive action in National Parks and to adopt the Forestry Commission definition of *the Right Tree in the Right Place* for this work and the environmental principles proposed by the National Park Authorities for their development.
- A strengthened 'section 62' duty to be included in the Environment Bill to place on all public bodies a clear duty to help *deliver* the nature recovery network as set out in the NPMP, and further legislation to create powers to promote and protect nature in National Landscapes on a par with built heritage or road transport
- Defra to support devolution bids that give powers to expedite local delivery of the Nature Recovery Network

Provide underpinning evidence and insights for nature recovery:

- Defra, National Parks and AONBs to develop a common template for assessing the state of nature and natural capital in our National Landscapes which is regularly and robustly assessed, with resources to help this work.
- Natural England to carry out a review into the losses and gains in wildlife across the country, and work with us to establish opportunity maps with clear goals for the reinstatement of past losses of habitats and species, taking account of the impacts of climate change.
- Natural England to develop with the local Management Plan partnerships a set of Nature Recovery indicators, representing the key nature conservation attributes in each National Landscape.

Funding for nature recovery in our national landscapes:

- External funding grants to support collaborative work that delivers nature recovery targets.
- Delivery of the ambitious targets outlined for National Parks above are a priority for the Nature for Climate Fund and Green Challenge Fund so support from these funds catalyse the delivery of these objectives.
- All future Government grants for nature recovery in National Parks to include a check that the work is consistent with the nature recovery aspirations in the local partnerships adopted Management Plan.

Nature recovery at landscape scale:

- National Park Authorities have been involved in some of the biggest landscape management schemes in the country over the past 10 years. We will work across our national landscapes on large scale collaborative 'Net Zero With Nature' projects on an even bigger scale – starting with the 'Great North Bog' and the SW Peatland Partnership.