

## Peak District Local Access Forum

**Date:** 9 December 2021

**Item:** 7

**Title:** Derbyshire's Rights of Way Improvement Plan (RoWIP) - Update

**Author:** Gill Millward, Countryside Access Improvement Officer, DCC

### **Purpose of Report**

To present Forum members with an update on progress towards the delivery of Derbyshire's Rights of Way Improvement Plan.

### **Aim 1: Existing Rights of Way Network**

- **Surface/ drainage improvements:** The major rights of way schemes highlighted at September's LAF meeting are being programmed for delivery on the ground, with work already underway or nearing completion on a number of routes. More than 170 other paths across the county will also benefit from improvements which are due to be carried out by the end of March 2022. These include drainage and surface repairs, vegetation clearance, waymarking, installing/ replacing bridges and sections of boardwalk. Approval is being sought for a further round of schemes to be delivered as part of the County Council's Highways Capital Programme in 2022/23 and information will be shared with LAF members in due course
- **Signposting:** Details of the locations where the County Council is planning to install roadside signposts can now be viewed on the Derbyshire Mapping Portal:  
[www.derbyshire.gov.uk/leisure/countryside/access/rights-of-way/scheduled-maintenance-programme/scheduled-maintenance-programme.aspx](http://www.derbyshire.gov.uk/leisure/countryside/access/rights-of-way/scheduled-maintenance-programme/scheduled-maintenance-programme.aspx)

### **Aim 2: Definitive Map and Statement**

- Work continues to investigate and process the Definitive Map Modification Order (DMMO) applications which have been received by the County Council and can be viewed through the on-line register:  
[www.derbyshire.gov.uk/leisure/countryside/access/rights-of-way/register-of-applications-for-rights-of-way/register-of-applications-for-rights-of-way.aspx](http://www.derbyshire.gov.uk/leisure/countryside/access/rights-of-way/register-of-applications-for-rights-of-way/register-of-applications-for-rights-of-way.aspx)
- Following an appeal to the Secretary of State, an order has been made to upgrade Cromford Footpath 41 running through Bow Wood to the north of Lea Road to bridleway. The County Council has recently

confirmed and brought into effect an order adding a footpath along Pudding Bag Lane in Ashover to the Definitive Map and Statement

### **Aim 3: An improved network**

- **Pennine Bridleway National Trail:** The annual condition surveys have now been completed for both the Pennine Bridleway and Pennine Way. The results will inform work planning and budgeting for 2022/23, with the priorities for investment due to be agreed at the December meeting of the Pennine National Trails Partnership which looks after the routes



on behalf of Natural England. For the Pennine Bridleway within Derbyshire, on-going maintenance work continues with the replacement of tired looking fingerposts and waymark posts along the route, as well as the renewal of non-slip surfaces on several road crossings. A series of activities has been planned by the Trails Partnership manager to raise the profile of the

Pennine Bridleway. The film launched in September has done a great job in capturing people's attention and showcasing what the trail has to offer to a wider audience, with an encouraging increase in followers on both Twitter and Facebook. A new waterproof map of the entire route from Middleton Top in Derbyshire to Ravenstonedale in Cumbria has been produced by Harvey Maps with support from the Yorkshire Dales National Park Authority's Sustainable Development Fund. It includes information about route planning, accommodation, places to visit and horsebox parking

- **White Peak Loop (WPL):** We are continuing to progress feasibility studies, proposals and costings for the route through Buxton and await the outcome of our recent funding bid under Tranche 3 of the Department for Transport's Active Travel Fund. The content of the WPL webpage has been improved and is being kept up to date with any new information or developments
- **Clowne Greenway:**
  - Works to provide the Gypsy Lane footpath/cycling link between Stoney View and Elmton Road in Creswell should be underway in the new year/early spring, with a view to opening the path once the electric gates have been installed at the current entrance to the primary school
  - The Clowne Greenway has already proved highly popular, with recorded user numbers supporting this investment. During the first 12 months, monitoring stations in the centre of Clowne recorded almost 215,000 targets accessing the greenway with 187,683 pedestrians, 18,701 cyclists and 5,504 horse riders

- In order to understand more about the impact and benefits that the Greenway has had on the local area, a Project Evaluation survey has been launched on our consultations web page here:

[www.derbyshire.gov.uk/council/have-your-say/consultation-search/consultation-details/the-clowne-greenway---project-evaluation.aspx](http://www.derbyshire.gov.uk/council/have-your-say/consultation-search/consultation-details/the-clowne-greenway---project-evaluation.aspx)

We are hoping to engage with local residents and visitors on topics such as active lifestyles and modal shift, as well as finding out how the Greenway could be further improved and developed. The consultation closes on 29 December 2021

- **Little Eaton Branch Line:** Design work for the route between Duffield Road in Little Eaton and the A609 at Rawson Green is progressing and documents are being prepared in readiness for further community consultation and the submission of a planning application. Road crossings are at the detailed design stage and traffic surveys have been commissioned. We are hoping to construct the route in 2022/23, subject to securing planning consent and a successful Tranche 3 funding bid
- **Visit Sleep Cycle Repeat:** Recent work on the Skegby Trail crossing of Batley Lane, which will include the use of flexi-pave, brings the total length of new and improved trails around the Pleasley Hub in Bolsover District to 7.5km



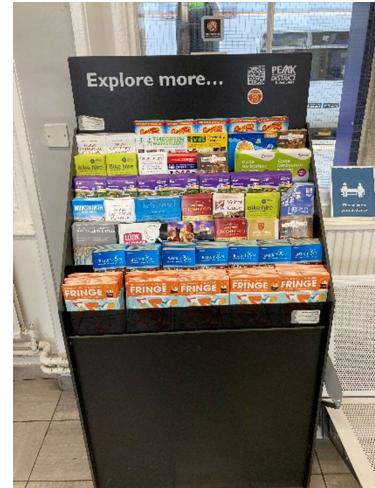
- **Chesterfield Active Travel Route:** At the meeting held on 14 October, cabinet members approved the continuation of further detailed design and subsequent implementation of proposals for the east-west walking and cycling route across Chesterfield with inclusion for measures to help alleviate concerns. The 8km route being funded through Tranche 2 of the Department for Transport's Active Travel Fund will provide access to Chesterfield Royal Hospital, the town centre and rail station, along with a range of other key employment, retail and education destinations. The community engagement summary document can be found on DCC's website appended to the cabinet report
- **Markham Vale:** The Council's flagship regeneration project was set up to create an attractive and accessible business park centred around the former Markham Colliery situated between Staveley and Bolsover in the north of the County. One of the original concepts for the project was to facilitate sustainable travel options for both home-to-work routes and for



the benefit of the local community to access and enjoy the newly restored and landscaped areas. Several routes to, from and through the site have already been constructed, including the Clowne Greenway. A further route runs parallel with the A632 connecting Markham Vale with Bolsover Business Park where it meets the current end of the Stockley Trail. Grant funding of £357,000 was secured from Sustrans via Bolsover District Council towards the £441,000 cost of constructing the 1.1km long walking/cycling route which is nearing completion

**Aim 4: Improve the promotion, understanding and use of the network**

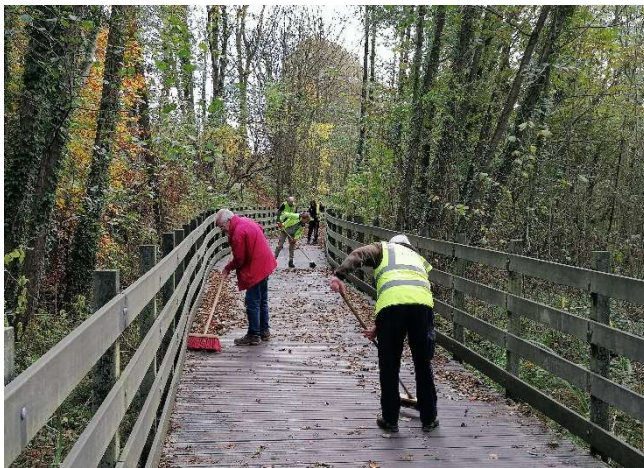
- **Cycle Derbyshire:** There has been a high demand for the new Cycle Derbyshire leaflet and a further reprint of 30,000 is underway. Tourist Information Centres, Visitor Attractions and Heritage Centres are all reporting increased visitor numbers and uptake of leaflets



**Aim 5: Greater community involvement**

- **Volunteer contribution:** the work of volunteers on our countryside sites, paths and trails continues to be supported under a service level agreement with

Groundwork Greater Nottingham. Back in November, local Sustrans volunteers teamed up with Groundwork to clear back overhanging vegetation on a section of the White Peak Loop, as well as carrying out further habitat improvements in the special environmental corridor being developed at Rowsley sidings where wildflowers such as red campion and meadowsweet are being encouraged to



flourish on the trail side, creating a haven for pollinating insects. The day's work culminated in clearing the boardwalk of leaves which was much appreciated by all trail users, which included pushchair users and older local residents on e-bikes.

**Recommendation:**

That Forum Members note this progress report for delivering Derbyshire's Rights of Way Improvement Plan.