

## Peak District Local Access Forum

**Date:** Wednesday 1 November 2023

**Item:** 7

**Title:** Derbyshire's Rights of Way Improvement Plan (RoWIP) - Update

**Author:** Gill Millward, Countryside Access Improvement Officer, Sustainable Travel Team, Derbyshire County Council

### Purpose of Report

To present Forum members with an update on progress towards the delivery of Derbyshire's Rights of Way Improvement Plan.

### Aim 1: Existing Rights of Way Network

- **Surface condition and drainage:** Work has been continuing to deliver the package of rights of way schemes being funded through the County Council's Highways Capital Programme to improve the drainage and surface condition of routes in need of repair. Further progress with regard to the schemes which the Peak District LAF Sub-Group has been consulted on and is following with particular interest is set out in the table below.

Works completed	
Taddington Byway Open to All Traffic (BOAT) 70 Sough Lane	Completed May 2022
Great Hucklow BOAT 18	Completed May 2022
Foolow BOAT 20, Nether Bretton	Completed May 2022
Ballidon BOAT 11 Minninglow Lane	Completed July 2022
Hartington Town Quarter Bridleway (BW) 42	Completed August 2022
Baslow Road and Bakewell FP20	Completed November 2022
Bonsall BOAT 64 & 71, Blakelow/ Blakemere Lanes	Completed November 2022
Calver FP 13, Stoney Middleton to Bramley Lane/ Coombsdale	Completed November 2022
Eyam FP 28 & BOAT 34 and Grindleford Restricted Byway (RB) 32, Riley Lane	Completed November 2022
Calver BW 30 and Bramley Lane	Completed December 2022, remedial works in June 2023

Great Longstone BOAT 52, Blakedon Hollow Lagoon	Completed December 2022
Stoney Middleton BW 17 (Moisty Lane to Black Harry Lane)	Completed January 2023
Hope FP33	Completed February 2023
Edensor BOAT 13 off Handley Lane	Completed March 2023
Green Lane Middleton (High Peak Trail to Green Lane)	Completed March 2023
Castleton FP 21 and Hollowford Road (BW22)	Completed June 2023
Hayfield BW 47 – Phase 2 below Kinder Reservoir	Completed June 2023
Edale BW 19 – Phase 1 (Pennine Way)	Completed June 2023
Beeley BOAT 13	Completed June 2023
Charlesworth FP 52 beside Torside Reservoir, linking to Trans Pennine Trail	Completed August 2023
Outseats FP 7, North Lees	Completed August 2023
Tintwistle BW 26 off A628 near Torside Reservoir	Completed August 2023
Castleton FP 20 Tor House to Hollins Cross	Completed September 2023
<b>Works issued to contractor</b>	
Eyam BOAT 25 (Sir William Hill Road to Edge Road)	Works stopped due to verge damage
Edale BW 19 Phase 2 (Pennine Way, Jacobs Ladder)	Waiting for start date
Hope Woodlands FP 24	Ash dieback felling to be completed before work can start
Hartington Upper Quarter FP144/ FP106	Alongside Fernilee reservoir, waiting for access approvals
<b>To be funded in 2024/25</b>	
Castleton BW 40	Dirtlow Rake
Hayfield BW 47 – Phase 1	Kinder Reservoir
Hope BW 32 & BW 5	Low Barn and Brinks Road to Hope Cross
Macclesfield Old Road	Bridge Car Park to Buxton
Peak Forest BW 55	Eldon Quarry
Birchover BOAT 23	Clough Lane
Chapel en le Frith BOAT 144	Rushup Edge (Chapel Gate)
Monyash BOAT 29	Derby Lane

- **Vegetation clearance:** A list of those paths where it is planned to cut back vegetation on an annual basis is now attached to the webpage for the Rights of Way Maintenance Programme:

[www.derbyshire.gov.uk/leisure/countryside/access/rights-of-way/scheduled-maintenance-programme/scheduled-maintenance-programme.aspx](http://www.derbyshire.gov.uk/leisure/countryside/access/rights-of-way/scheduled-maintenance-programme/scheduled-maintenance-programme.aspx)

- **Roadside signposting:** Work is also underway to replace 400 missing or damaged roadside signposts across the County in 2023/24, with 320 having been completed so far. Details of those locations (shown as red dots) where signposts are planned to be installed are available on the Derbyshire Mapping Portal by selecting the Public Rights of Way Maintenance layer:



the Public Rights of Way Maintenance layer:

[www.derbyshire.gov.uk/council/partnerships/derbyshire-mapping-portal/derbyshire-mapping-portal.aspx](http://www.derbyshire.gov.uk/council/partnerships/derbyshire-mapping-portal/derbyshire-mapping-portal.aspx)

## Aim 2: Definitive Map and Statement

- In terms of dealing with the backlog of Definitive Map Modification Order (DMMO) applications, a Public Inquiry was held back in August for an order relating to the addition of a Byway Open to All Traffic along the non-classified highway between New Road and Main Road near Stoke in Grindleford Parish after objections were received. In June 2023, a local hearing was held at New Mills Town Hall to consider an Order proposing to add a Footpath from Yeadsley Lane to Buxton Road (A6) in Whaley Bridge.

- **Project 2026 Derbyshire:** In advance of the new 1 January 2031 cut-off date, volunteers are continuing to investigate historic, unrecorded routes. According to the British Horse Society's Dobbin database for Derbyshire, research records have now been created for 381 paths across the county, with 206 DMMO claims already submitted to the County Council. Those applications which have been validated ie made in accordance with the requirements of the legislation can be viewed through the on-line register at:

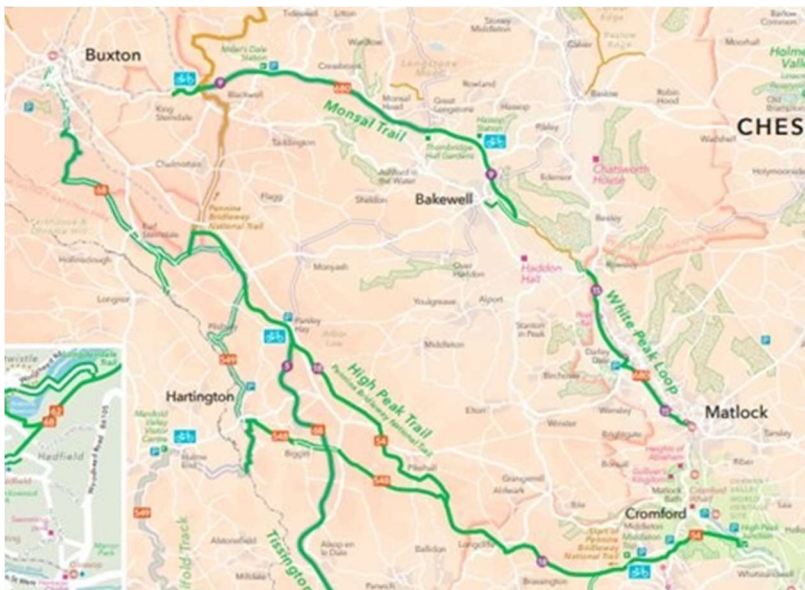
[www.derbyshire.gov.uk/leisure/countryside/access/rights-of-way/register-of-applications-for-rights-of-way/register-of-applications-for-rights-of-way.aspx](http://www.derbyshire.gov.uk/leisure/countryside/access/rights-of-way/register-of-applications-for-rights-of-way/register-of-applications-for-rights-of-way.aspx)

## Aim 3: An improved network

- Pennine Bridleway National Trail (PBW): Grant offers have been received from the Pennine National Trails Partnership on behalf of

Natural England (totalling £38,812) towards the costs of employing a PBW Maintenance Officer and for carrying out works on the Trail in 2023/24, supported by match funding from the County Council. On-going maintenance continues, with drainage work and general repairs being undertaken along the route. Groundwork volunteers have been busy repairing gates and carrying out significant drainage work around Hayfield. Funding has been secured from the County Council's Highways Capital Programme (LTP3) to replace the non-slip surfaces on road crossings and work is also being undertaken to investigate eligible sections for improvements on the PBW for possible funding from Natural England's Accessibility Fund. The annual condition surveys for the Pennine Bridleway and Pennine Way have now been completed and will be used to inform the allocation of maintenance grants for 2024/25. On the development side, a £10k grant is also available from the Partnership to enable further investigation work to continue in 2023/24 for the missing sections of the Trail around Glossop. Risk assessments and method statements have recently been sent to Network Rail to secure future site visits to help progress the proposed alternative route into Gamesley.

- **White Peak Loop:** 62km or 71% of the White Peak Loop (WPL) is currently complete. The missing gaps are from the Monsal Trail at



Topley Pike into and through Buxton to Harpur Hill; from High Peak Junction near Cromford to Matlock Railway Station and from Old Station Close in Rowsley to Coombs Road, Bakewell.

At its meeting on 15 June 2023, the County

Council's Cabinet formally accepted the Active Travel England (ATE) Tranche 4 grant of £275,000. This has been allocated to help fund further work to progress the missing sections of the White Peak Loop from the end of the Monsal Trail at Topley Pike through Wye Dale/ Woo Dale and across Buxton town centre to Harpur Hill, building on the recent appraisal work undertaken by our consultants. The next steps will include: outlining and agreeing the preferred route alignment, surveys and other assessments/ approvals required to support planning applications, preliminary to detailed designs, construction costs and

whole route stakeholder/ community engagement. Further information about the WPL can be found here:

[www.derbyshire.gov.uk/leisure/countryside/access/cycling/white-peak-loop/white-peak-loop.aspx](http://www.derbyshire.gov.uk/leisure/countryside/access/cycling/white-peak-loop/white-peak-loop.aspx)

- **Little Eaton Branch Line – Derby City to Ripley Active Travel**

**Route:** At its meeting on 15 June 2023, Cabinet also formally accepted the Active Travel England (ATE) Tranche 4 grant of £2.73million to deliver this extension to the National Cycle Network (NCN) Route 54 between Duffield Road in Little Eaton and Rawson Green, Kilburn. The results of the stakeholder/ community engagement which was carried out last Autumn have now been published on our website:



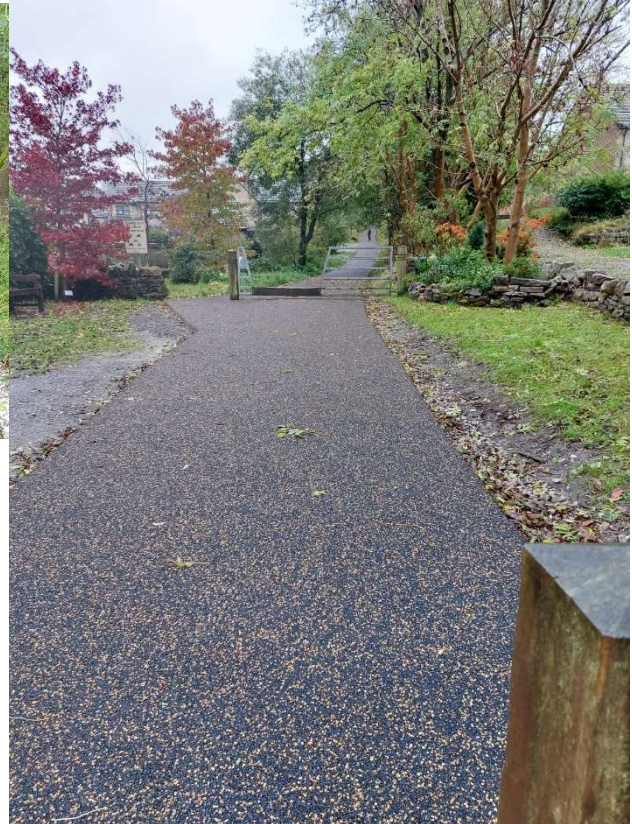
[Little Eaton Results Summary \(derbyshire.gov.uk\)](http://www.derbyshire.gov.uk/leisure/countryside/access/cycling/white-peak-loop/white-peak-loop.aspx)

- **Derwent Valley Cycleway:** Work on the feasibility study which has been commissioned by the County Council to look at the possible route options for a 54km proposed cycleway/ trail through the Derwent Valley between Shardlow to the SE of Derby and Hathersage is nearing completion. Reports for each of the five sections of the route are being finalised with input from officers and members of the Derwent Valley Trust.

- **Peak Forest Tramway Trail:** The resurfacing of a 1.3km section of the Peak Forest Tramway Trail between Lower Crist, near Buxworth and Green Lane in Chinley is now complete. Three A frame/ K barriers have also been removed to provide an open and more accessible route for all users.



- **Shallcross Incline, Whaley Bridge:** Work to resurface and repair the Shallcross Incline Greenway was completed at the beginning of September. This involved laying a new porous paving surface made from recycled rubber and natural stone aggregate.



The new surface allows water to percolate through it, reducing the risk of local flooding and helping the path to remain drier and more easily accessible in poor weather conditions. The K barriers at either end of the Incline have also been removed and two new recycled plastic benches installed to provide additional resting places along the route. This is the first time that we have used this type of material on such a substantial length of path (600m). The feedback received so far has been really positive and we will continue to monitor how weather resistant and hardwearing the new surfacing proves to be.

- **Safer Roads Fund Projects:** Following the public consultation events which took place for the A5004 (Long Hill) between Buxton and Whaley Bridge and the A5012 (Via Gellia) between Cromford and Newhaven, reports were presented to the Cabinet meeting on 21 September (see Agenda Items 15 and 16) when Members resolved to accept the officer recommendations:

<https://democracy.derbyshire.gov.uk/ieListDocuments.aspx?CId=135&MId=1314&Ver=4>

#### **Aim 4: Improve the promotion, understanding and use of the network**

- **Local Cycling and Walking Infrastructure Plan (LCWIP):** The report summarising the responses received to the public engagement is being finalised and will be published online once it has been approved by each of the authorities involved in the preparation of the LCWIP for the Derby Derbyshire Nottingham Nottinghamshire (D2N2) area.

- **Active travel webinars:** In partnership with Visit Peak District & Derbyshire, the County Council co-ordinated a successful series of five webinars on cycling and active travel helping to create and support healthier communities and economic growth. The recordings are available here to view and share:  
<https://www.visitpeakdistrict.com/industry/events>

**Aim 5: Greater community involvement**

- **Volunteer contribution:** The work of volunteers on our countryside sites, paths and trails continues to be supported under a service level agreement with Groundwork Five Counties, formerly known as Groundwork Greater Nottingham. Groundwork operates across Nottinghamshire, Derbyshire, Lincolnshire, Rutland and Leicestershire, delivering projects to support local people and communities. Volunteer task days are managed and supervised on behalf of the County Council, including support for the groups working on the Clowne Greenway, Archaeological Way, Pennine Bridleway National Trail, Little Eaton Branch Line and White Peak Loop.

**Recommendation:** That Forum Members note this progress report for delivering Derbyshire's Rights of Way Improvement Plan.