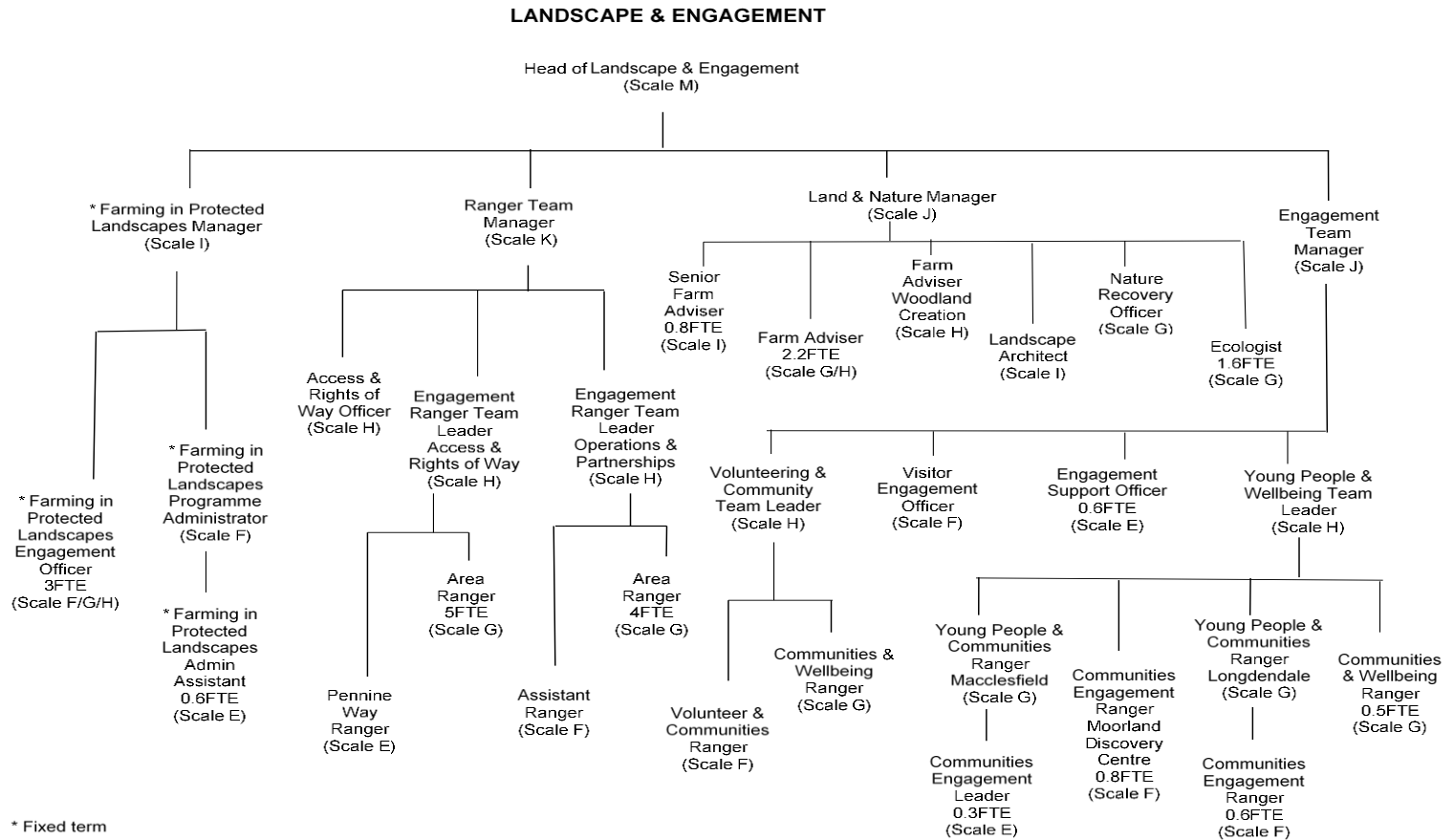


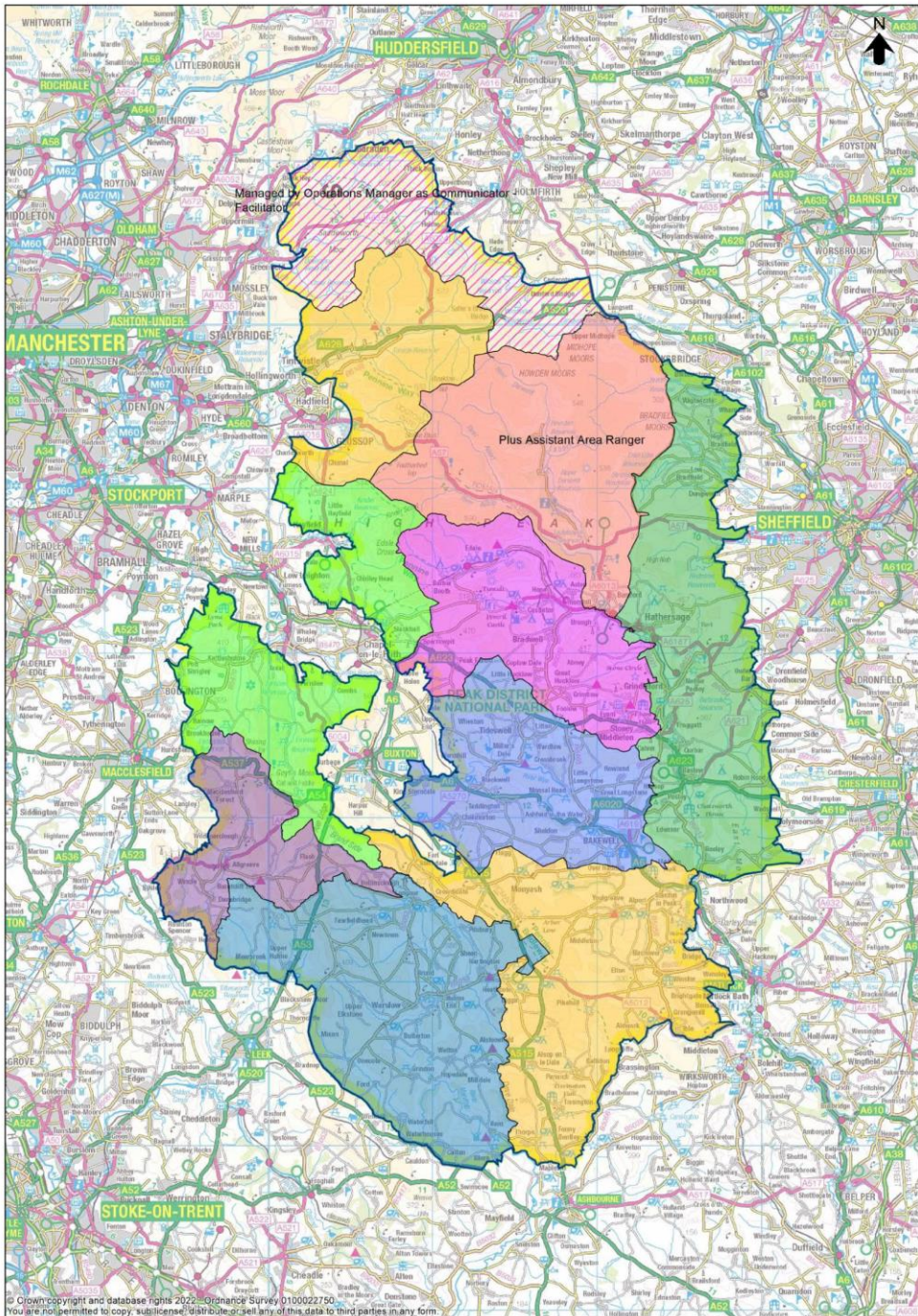
Team Structure and Work Priorities

Andy Farmer

Ranger Team Manager

Landscape and Engagement Team Structure





Managed by Operations Manager as Communicator
Facilitator

Plus Assistant Area Ranger

Greater Manchester
NATIONAL FIRE DISTRICT

Priorities of the Team

- ROW Orders arising from planning development decisions
- Delivering CROW Access and Relevant Authority
- Work with highway authorities with regard to rights of way where we have an SLA or MOU
- Local Access Forum
- Green Lane strategy
- Access for All (DEFRA funding)
- Fires Operation Group
- Visitor Management
- Assisting Delivery of the DAP e.g. Health and learning agendas
- Water Company Partnerships
- Delivery of priorities within the NPMP e.g. Recreation Hubs
- Wider delivery of the NPMP
- Volunteers

Priorities within Access and ROW work

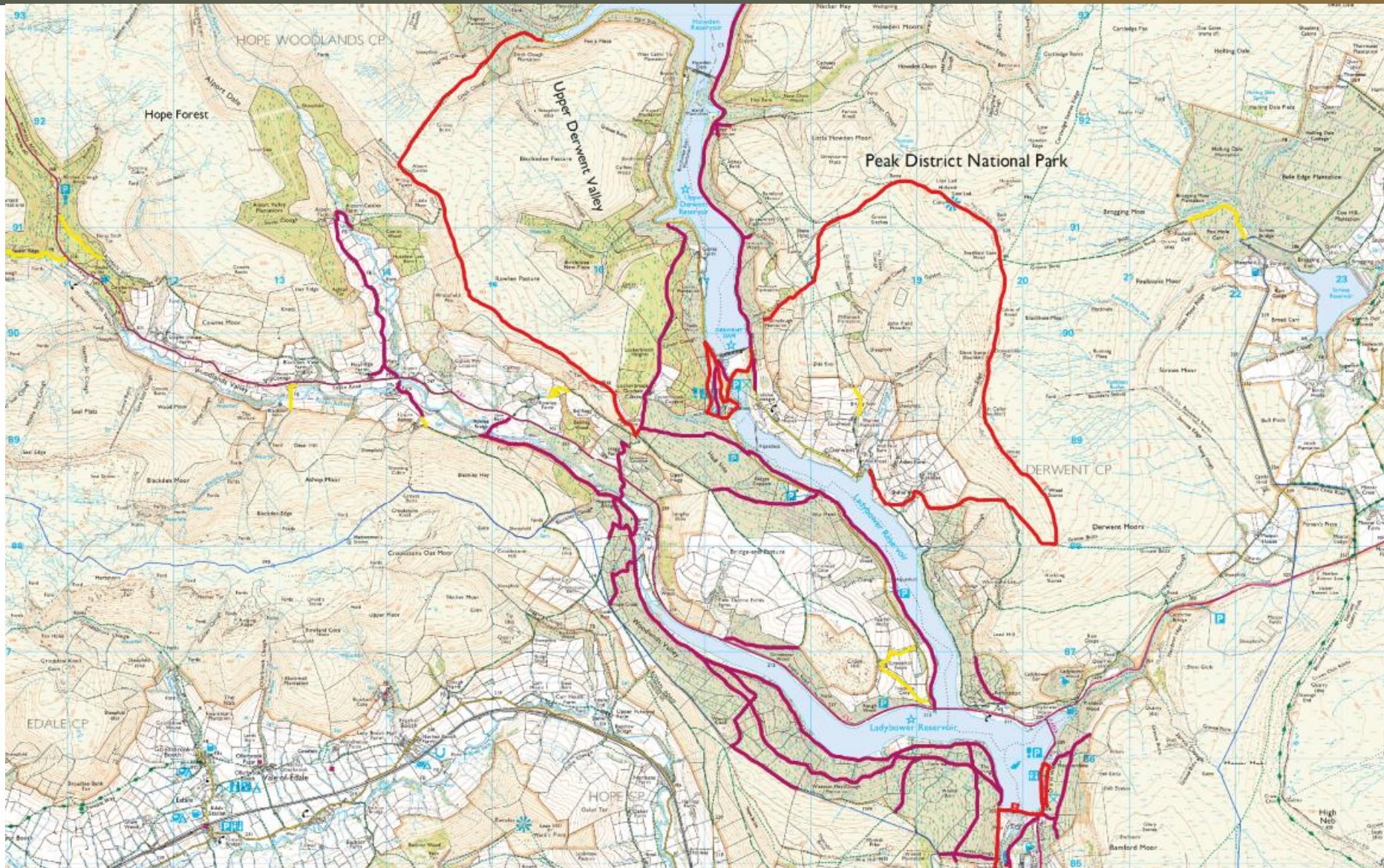
- ROW Orders linked to planning developments
- Access for All Year 3 Funding 2024/25
- Review of Open Access Directions
- Development and delivery of the Access App (demonstration)
- Recreation Hubs – the envelope of this work is still being defined but will incorporate aspects of our access for all work, our work on rights of way and concession routes , the Green Lane Strategy, sustainable transport etc. But it is a NPMP aspiration and many partners will contribute/lead
- 5% Ease of Use Survey
- All enquiries on ROW within the NP are automatically referred to relevant HA
- But our ROW/Concession/Access Priorities are....

ROW, Concession Route and Access Priorities for the Team

- Walks Around Booklets, Family Walks, Miles without Stiles, routes improved by DEFRA funding (on map red)
- Rights of way and concession routes on water company land (on map purple)
- National Trails e.g. Pennine Way
- Routes promoted by others e.g. Limestone Way and specific requests from highway authority
- Routes that are identified as significantly enhancing new visitors access from hubs
- ROW that facilitate access to CROW land
- FIPL work
- Access Points and concession routes that PDNP have put in
- Monitoring of wider access points



PEAK DISTRICT NATIONAL PARK



Green Lane Strategy

- The PDNPA will continue to respond to issues arising on priority rights of way of which green lanes form a part and will be incorporated into the Recreation Hubs work
- The strategy focuses on a partnership approach, as it always has, in conjunction with highway authorities, landowners, police and user groups who will discuss the specific nature of issues on a route and agree the proportionate approach by the appropriate bodies, subject to resources available.
- The work may include signage, re-surfacing, legal enforcement and regulation by the appropriate organisation