

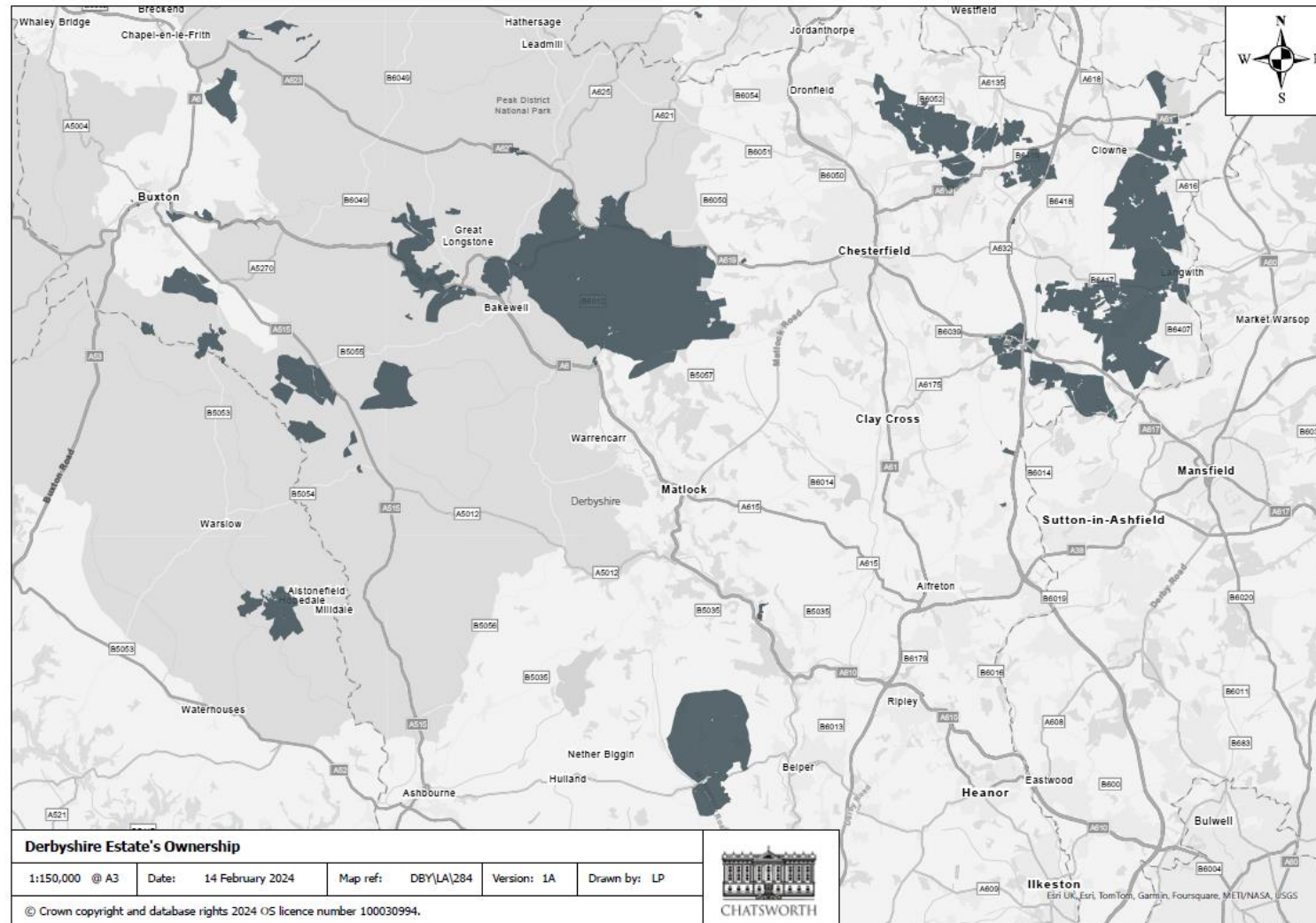
Public access and the Devonshire Group



CHARLOTTE LEECH
Deputy Estates Manager, Derbyshire



A Landowner's perspective on the benefits and challenges of public access



Our Whole Estate Plan and Public Access



- To make new connections and remove barriers (physical, intellectual, cultural, socio-economical) preventing access to Chatsworth.
- Assist the National Park in delivering their vision for every child living within an hour of Chatsworth to spend a “Night under the Stars”.
- Work with partners to explore the creation of a cycle path linking Chatsworth House with the Monsal Trail/ White Peak loop.

View the WEP at
<https://www.chatsworth.org/media/nh1d2czb/chatsworth-core-estate-whole-estate-plan.pdf>

CHATSWORTH WHOLE ESTATE PLAN

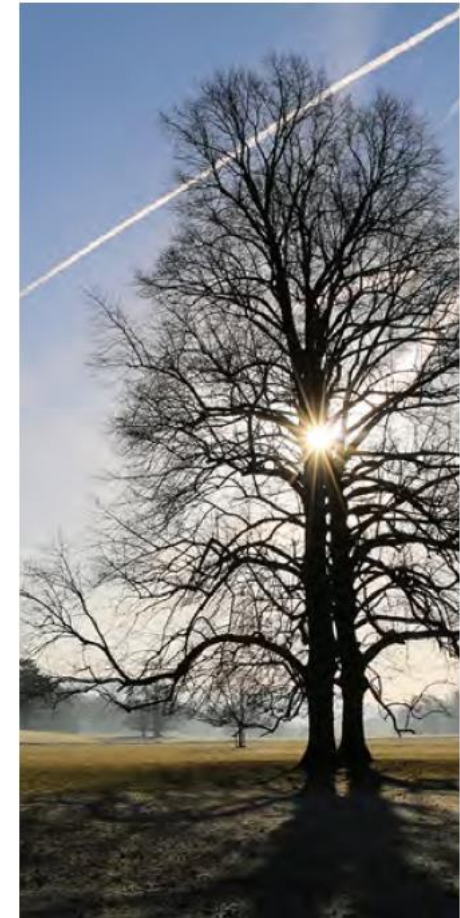
SEPTEMBER 2025



Challenges:

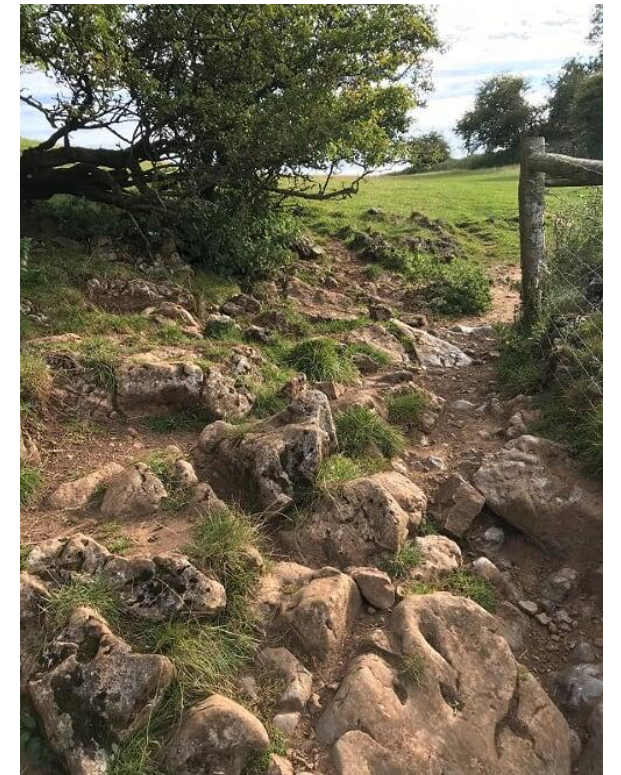
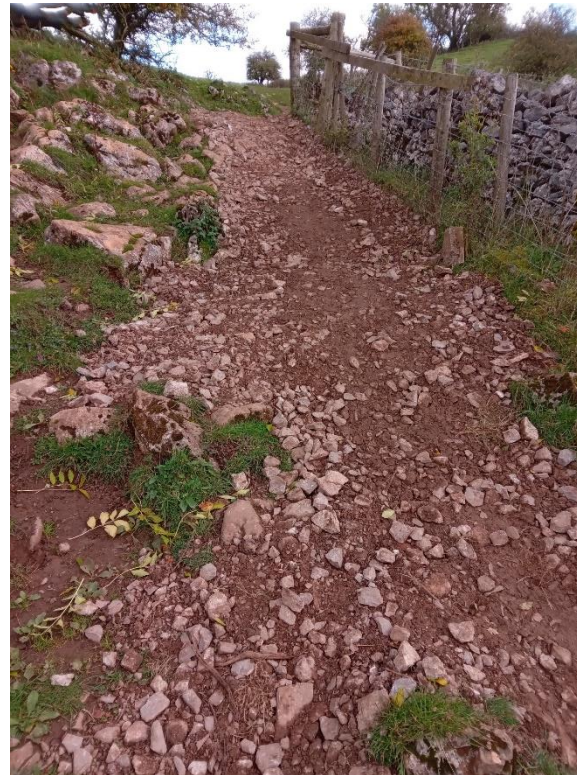


- Management of busy sites away from the team based at Chatsworth. No on site presence or management.
- Juggling multiple users groups - eg. Anglers and water craft/ swimmers, horse riders and off-road vehicles.
- Conflict with agricultural use.
- Anti social behaviour.
- Supporting and encouraging public access, and the requests for more access whilst also keeping some space as a refuge for wildlife.
- Maintenance costs – eg. flood events more frequent, ageing infrastructure, woodland management, litter collection, infrastructure maintainance.
- Car parking, sustainable travel and provision of amenities.
- Impact on our communities.
- Health and safety concerns (mineshafths, stock, forestry).



Opportunities:

- Support the work of Chatsworth House Trust.
- Help tenanted diversified business and local economy.
- Education and outreach and public engagement.
- Reinstate old pathways, establishing more concessionary routes and open access land.
- Availability of funding via FIPL to make access improvements eg. Thors Cave and Monsal Dale.
- Establishing partnerships.
- Citizen science opportunities, visitor monitoring and fixed point photography.





Any questions?